

FEMA National Watch Center

# Daily Operations Briefing

Wednesday, February 28, 2024

8:30 a.m. ET



**FEMA**

# National Current Ops / Monitoring

---

## New Significant Incidents / Ongoing Ops

- Wildfires – Southern Plains

## Hazard Monitoring

- Heavy snow – Pacific Northwest to the Northern Rockies and Great Lakes
- Freezing rain – Great Lakes
- Thunderstorms – East Coast

---

## Disaster Declaration Activity

- Three FMAG approvals
- Approval: Major Disaster Declaration – NH
- Two amendments issued

## Event Monitoring

- No new significant events



**FEMA**

# National Fire Activity *(as of Feb 28)*

## National Preparedness Level

**PL 1**

Initial Attack Activity <i>(24-hour period)</i>	Light <i>(821 fires)</i>
<b>New large fires:</b>	<b>63</b>
<b>Large fires contained:</b>	<b>28</b>
<b>Uncontained large fires:</b>	<b>42</b>
<b>Cumulative Acres Burned</b>	<b>186,406</b>
<b>Total Responders <i>(2024 Fire Season)</i></b>	<b>1,211</b>
<b>Type 1 IMTs deployed</b>	<b>0</b>
<b>Complex IMTs deployed</b>	<b>1</b>



### Preparedness Levels Legend

<b>PL 1</b>	Minimal fire activity; many resources available
<b>PL 2</b>	Large wildland fires burning throughout country; resources mobilized from other areas
<b>PL 3</b>	Wildfire activity ongoing throughout 25% of county; National Interagency Coordination Center (NICC) sets priorities, allocates resources, and mobilizes assets at national level
<b>PL 4</b>	High levels of fire activity and areas are competing for firefighting resources; 60% of the nations wildland firefighting resources committed
<b>PL 5</b>	Extremely high levels of fire activity; 80% of nations firefighting resources committed

# Smokehouse Creek Fire – Texas

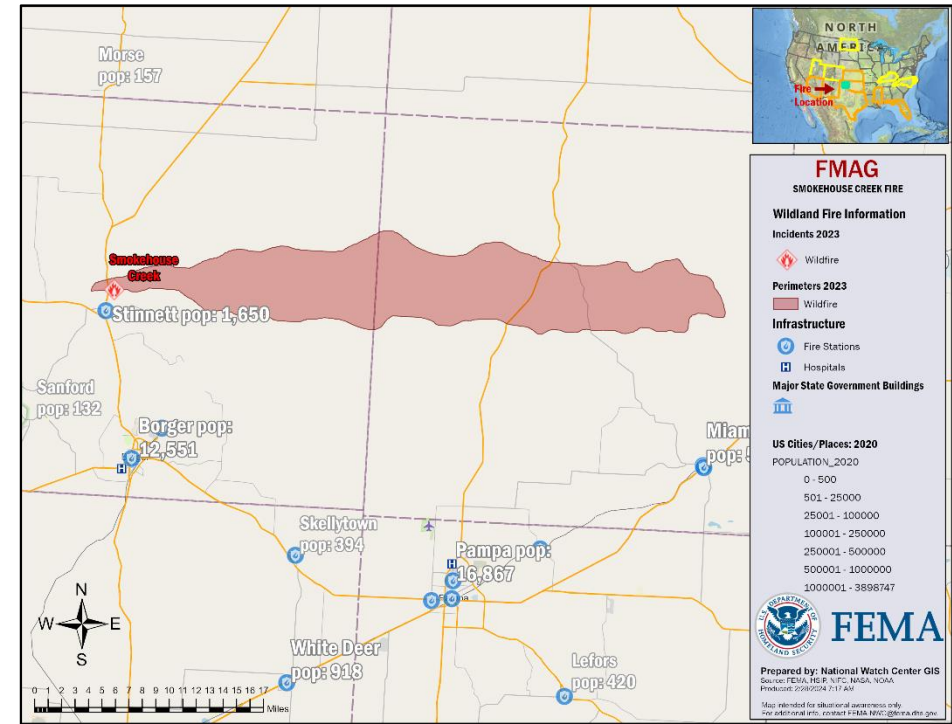
Fire Name (County, ST)	FMAG #	Acres Burned	Percent Contained	Evacuations	Structures (Homes / Other)			Fatalities / Injuries
					Threatened	Damaged	Destroyed	
Smokehouse Creek (Hutchinson, TX)	5488-FM-TX	500,000 <i>(Region 6)</i>	0%	M: 6,500	H: 0	H: 0	H: 0	0 / 0
				V: Unknown	O: 700	O: 0	O: 0	

**Situation:** *(Region 6 as of 7:45 a.m. ET)*

The fire is burning on private land in and around the communities of Canadian (pop. 2,233), Glazier (pop. 77), Pampa (pop. 16,000) and Miami (pop. 547). Mandatory evacuations are in for the cities of Canadian, Miami, and Glazier. They are asking everyone remaining to shelter in place at the Canadian High School gymnasium. Two shelters were opened with zero occupants at Hemphill County.

**Response:**

- FMAG approved Feb 27
- TX EOC at remains at Partial Activation (Ongoing Threats)
- TX Governor has declared a state of emergency due to the wildfires
- Region VI RWC and NWC continue to monitor



# Windy Deuce Fire – Texas

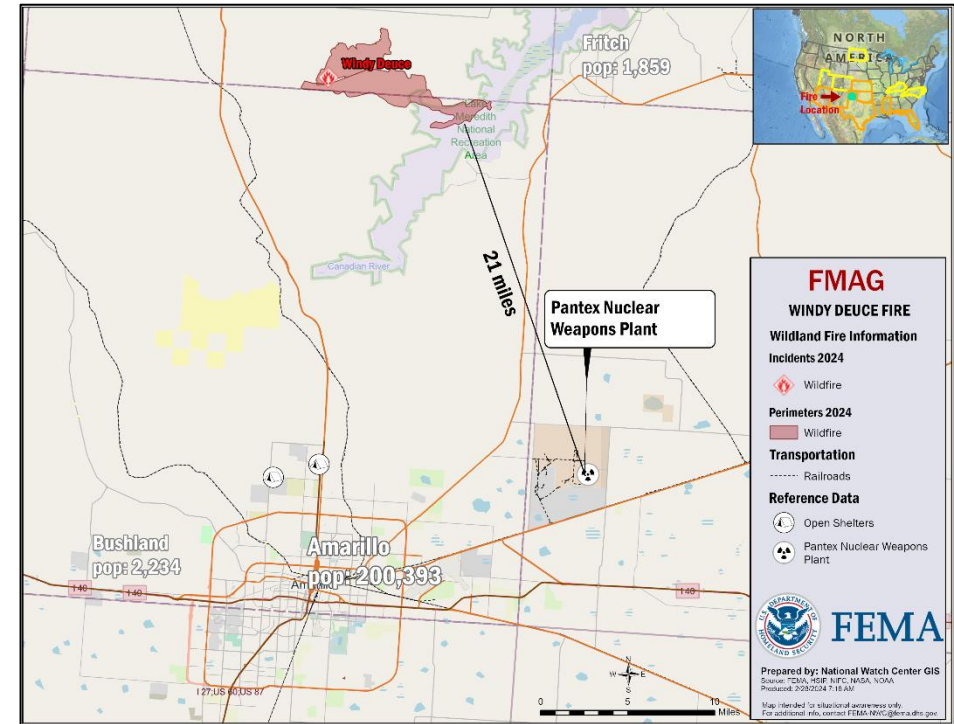
Fire Name (County, ST)	FMAG #	Acres Burned	Percent Contained	Evacuations	Structures (Homes / Other)			Fatalities / Injuries
					Threatened	Damaged	Destroyed	
Windy Deuce (Moore, TX)	5487-FM-TX	40,000	20%	M: 1,800 <i>(ICS-209)</i>	H: 830 <i>(R6 Recovery)</i>	H: 0	H: 100 <i>(ICS-209)</i>	0 / 0
				V: Unknown	O: 0	O: 0	O: 0	

**Situation:** *(Region 6 as of 7:45 a.m. ET)*

The fire is burning on private and federal land. Over 830 primary homes in and around Fritch, Texas; 800 structures in Arroyo Verde and Sage Mesa (combined population 1,500); and an unknown number of The fire was also threatening 75 businesses, 25 clinics/nursing homes, 3 schools, a city hall, a public works, postal buildings, 2 electrical pipelines, 2 Westex pipelines, 2 natural gas pipelines, 4 transmission lines, and the Canadian River watershed.

**Response:**

- FMAG approved Feb 27
- TX EOC at remains at Partial Activation (Ongoing Threats)
- TX Governor has declared a state of emergency due to the wildfires
- Region VI RWC and NWC continue to monitor



# Catesby Fire – Oklahoma

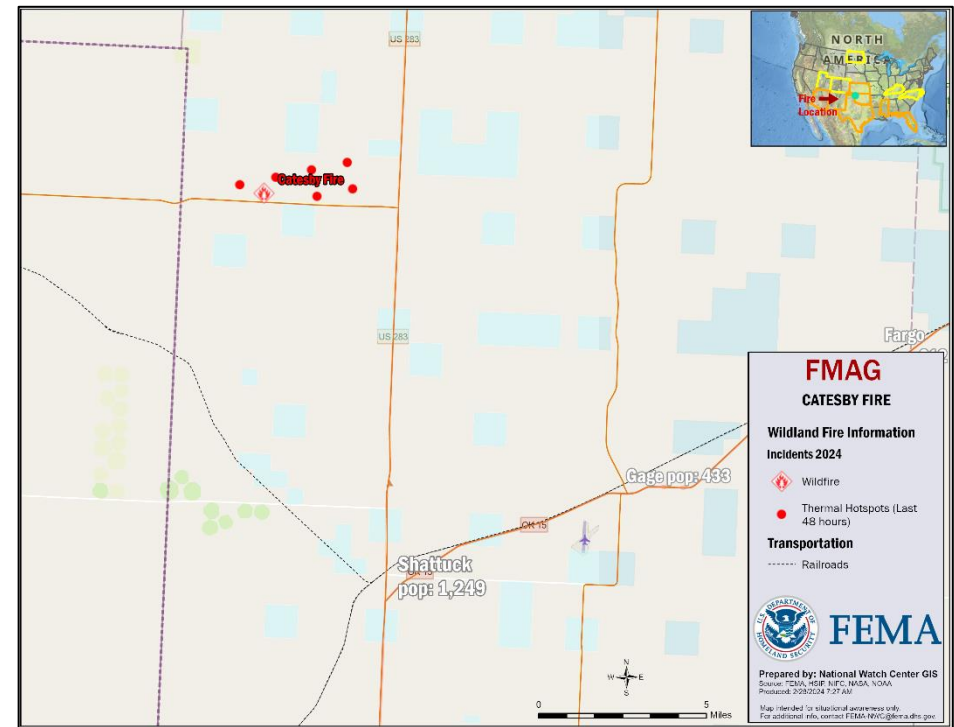
Fire Name (County, ST)	FMAG #	Acres Burned	Percent Contained	Evacuations	Structures (Homes / Other)			Fatalities / Injuries
					Threatened	Damaged	Destroyed	
Catesby (Ellis, OK)	5489-FM-OK	76,800	0%	M: 1,682	H: 830	H: 0	H: 0	0 / 2 <i>(ICS-209)</i>
				V: 0	O: 0	O: 0	O: 0	

**Situation:** *(Region 6 as of 7:45 a.m. ET)*

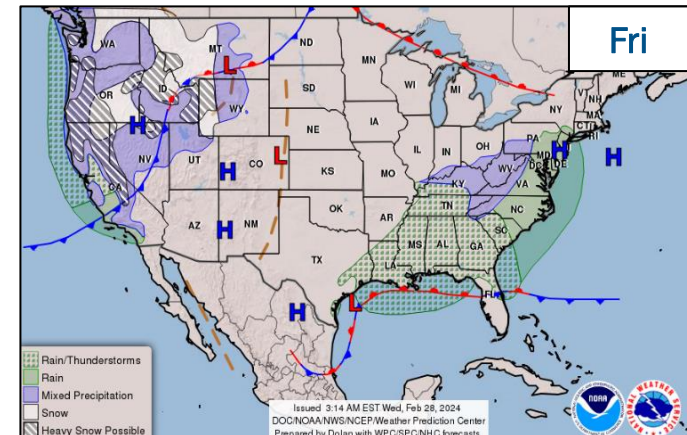
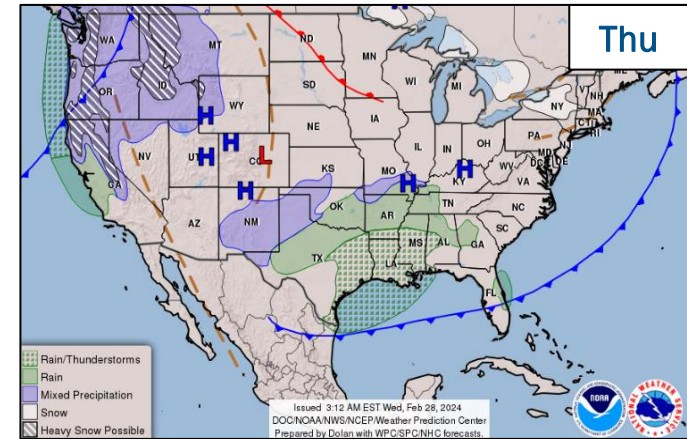
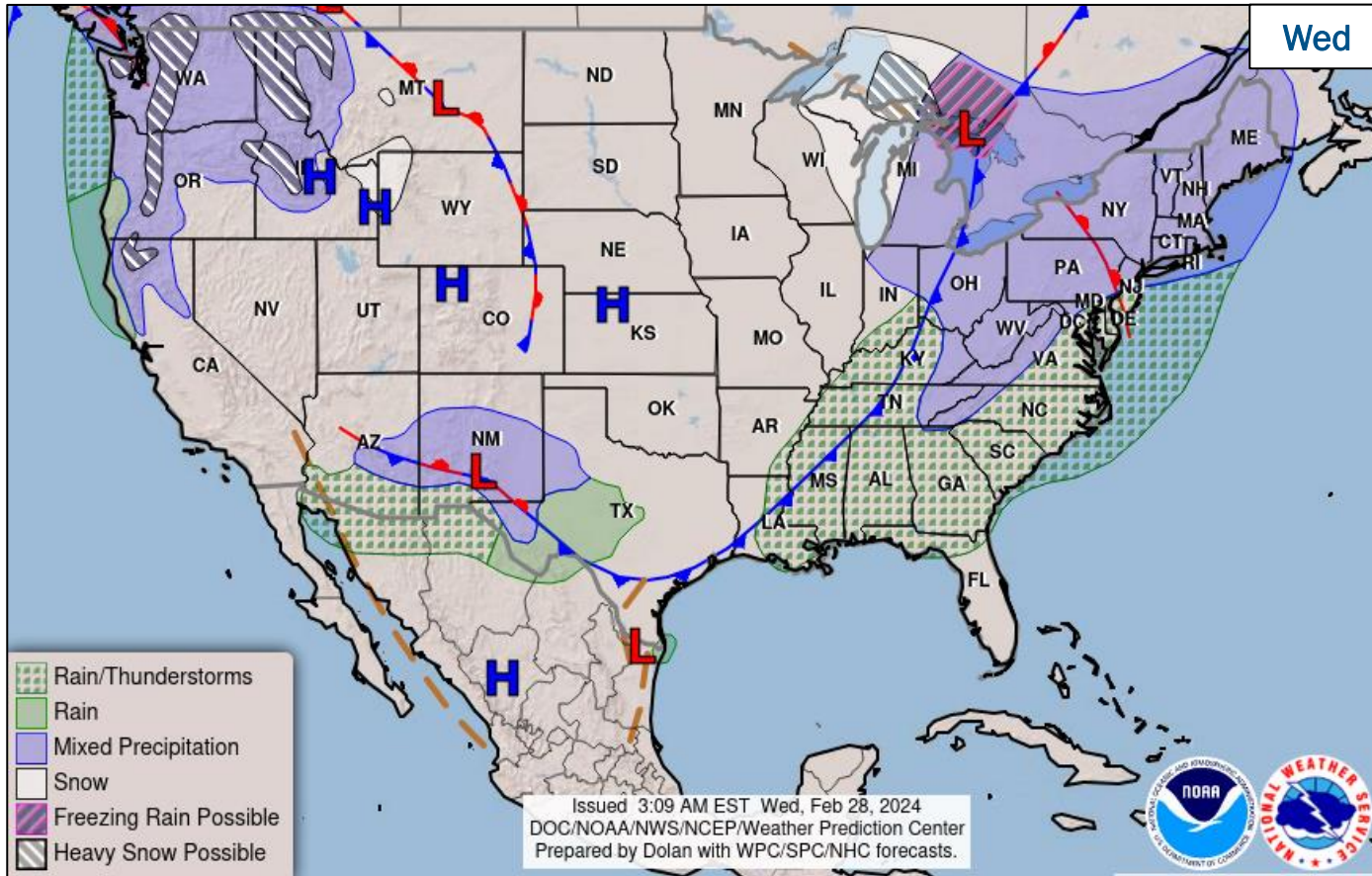
The fire is burning on state and private land in and around the communities of Shattuck (pop. 1.2k), and Gage (pop. 433). The fire was threatening 1,682 individuals, including the entire population of Shattuck, OK (pop. 1,249) and over 800 primary homes in and around Shattuck, Texas. The fire was also threatening public and private utilities, an electrical COOP, a windmill farm, 2 fire stations, police stations, city hall, nursing home, hospital, public works, elementary school, high school, museum, public library, rail system, agricultural grain COOP, and city parks. Two shelters were opened: Ft. Supply Baptist Church and the Woodward Conference Center.

**Response:**

- FMAG approved Feb 27
- OK EOC at Partial Activation (Fire Weather)
- Region VI RWC and NWC will continue to monitor



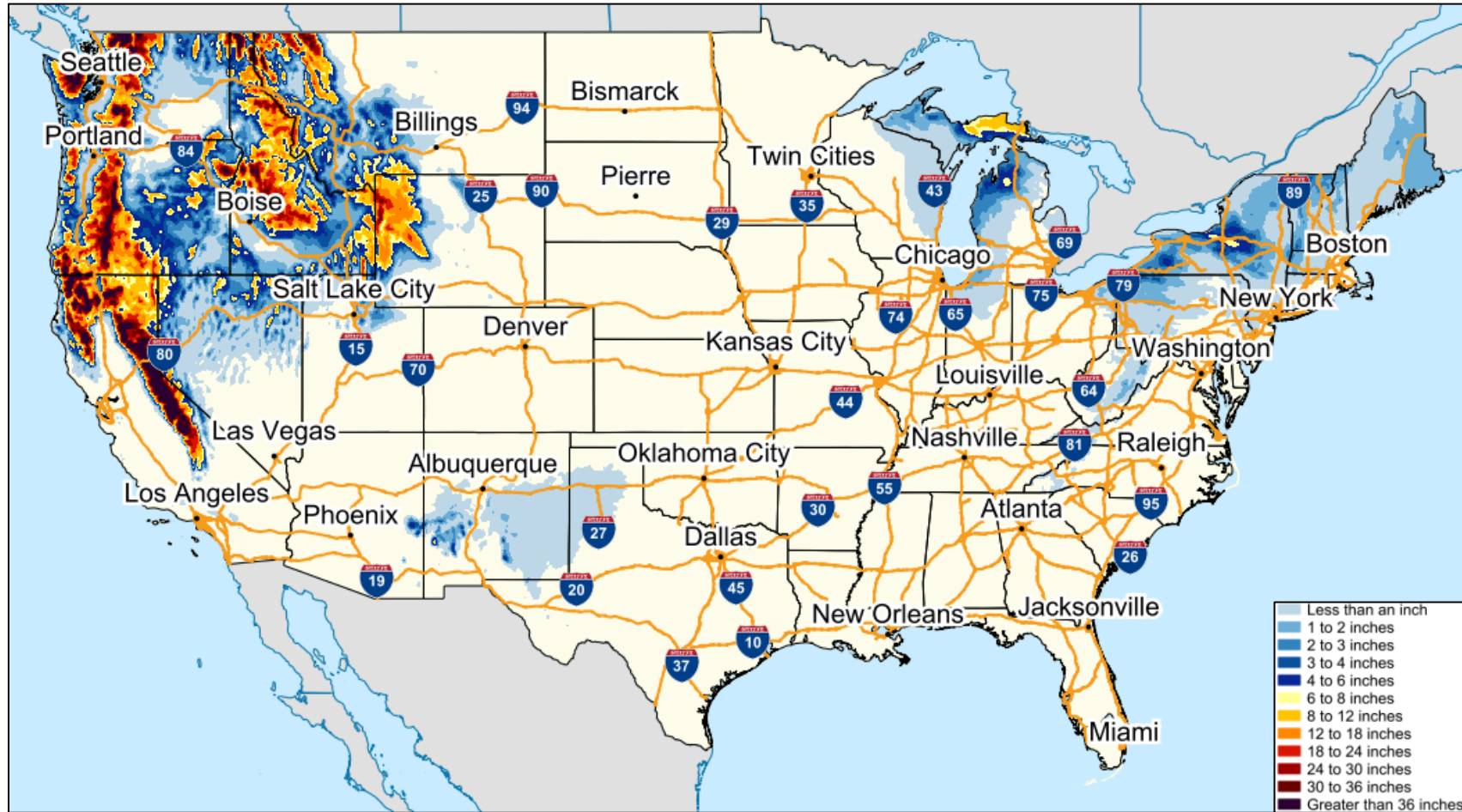
# National Weather Forecast



FEMA

National Watch Center

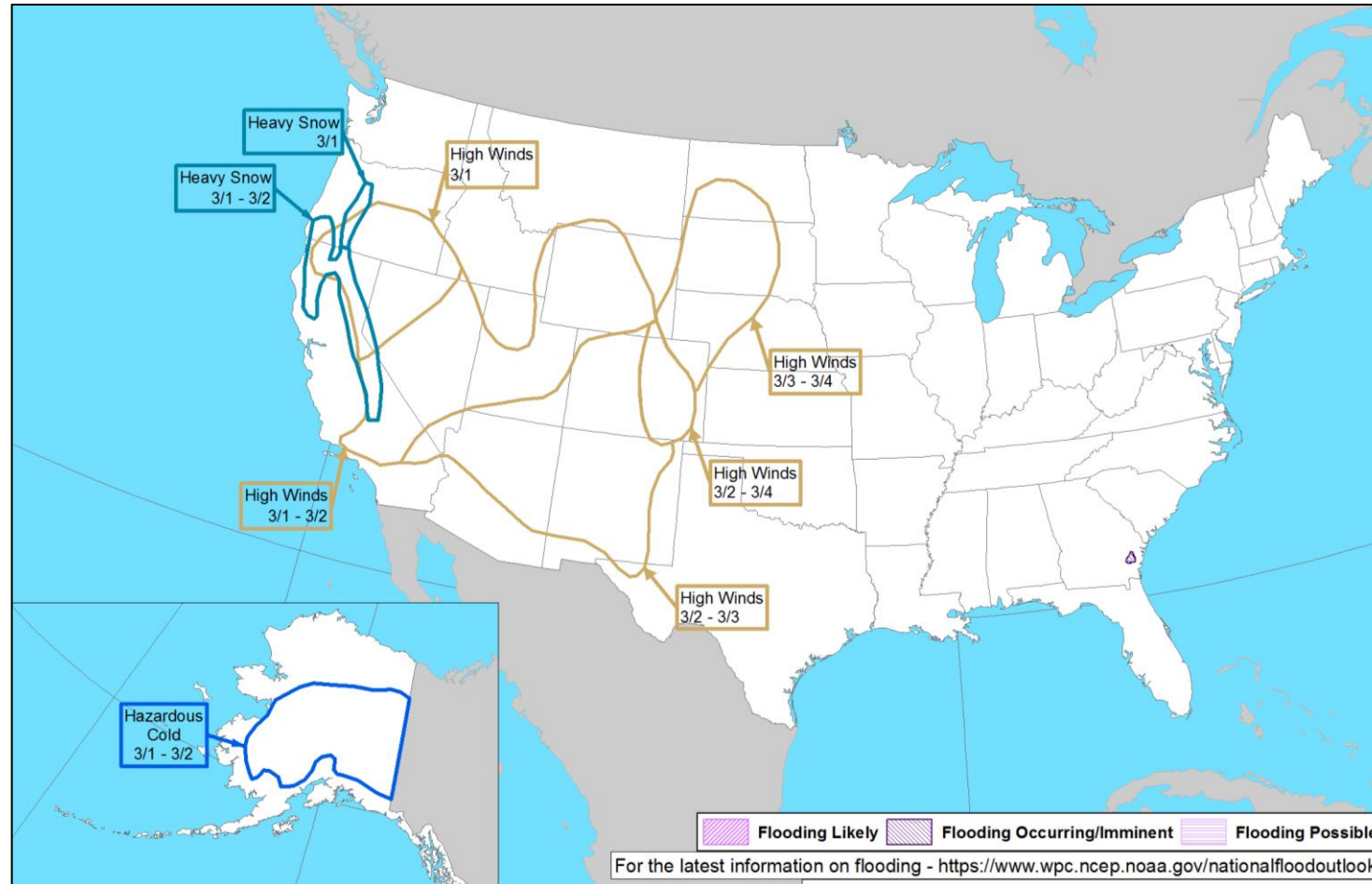
# Snowfall Forecast



FEMA



# Hazards Outlook – Mar 1-5



FEMA

# FEMA Common Operating Picture

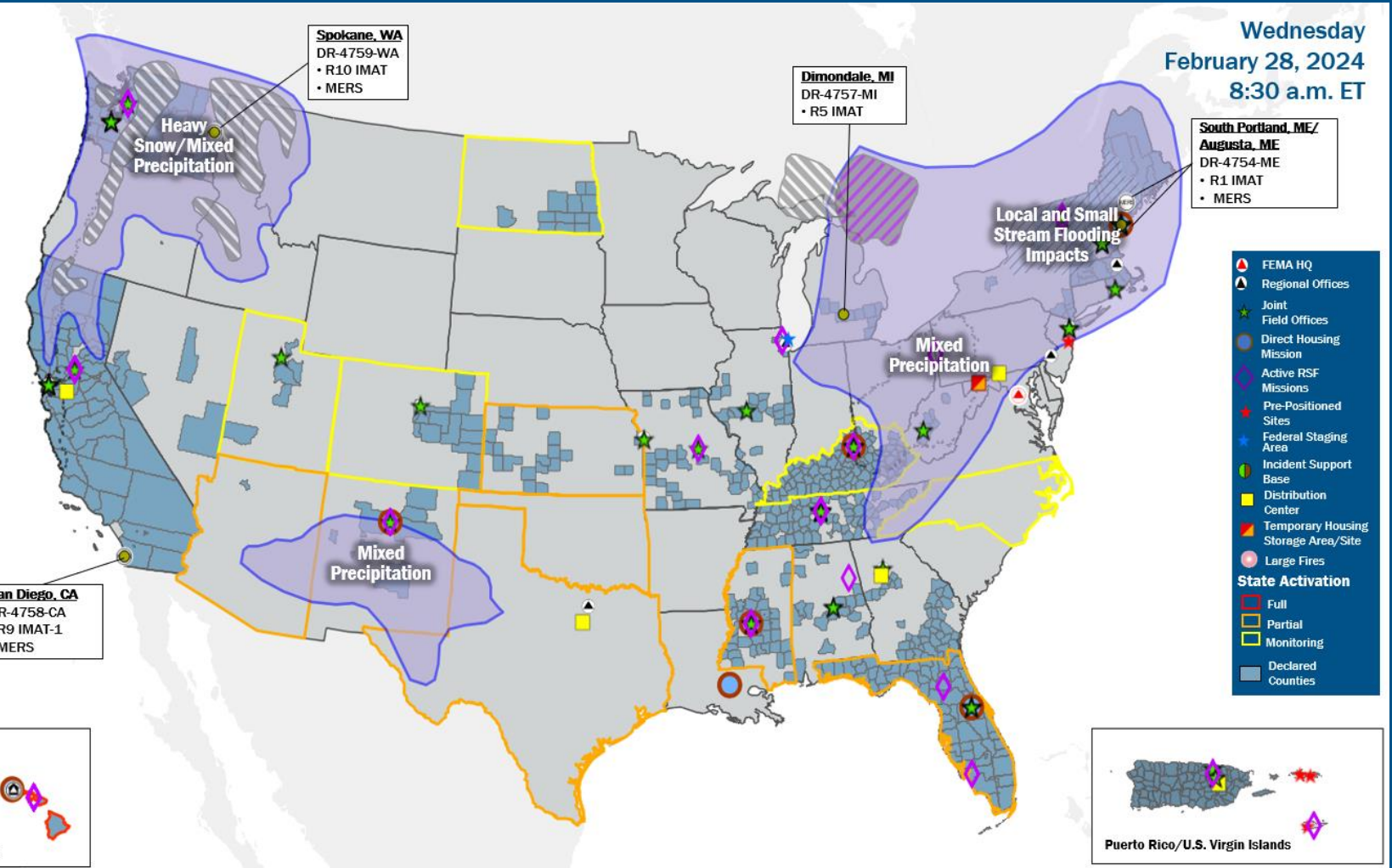
**19 + 5** Joint Field Offices Virtual Joint Field Offices Supporting  
**74 + 4** Major Disasters Emergency Declarations  
**12** Direct Housing Missions **31** RSF-Supported Disasters

Wednesday  
 February 28, 2024  
 8:30 a.m. ET

FEMA HQ	
NWC	NRCC
Monitoring	Activated
FEMA REGIONS	
Watch	RRCC
Monitoring	I Rostered
Monitoring	II Rostered
Monitoring	III Rostered
Monitoring	IV Rostered
Monitoring	V Rostered
Monitoring	VI Rostered
Monitoring	VII Rostered
Monitoring	VIII Rostered
Monitoring	IX Rostered
Monitoring	X Rostered
Notes:	
RWCs/RRCCs/IMATs: NRCC: Sustained Ops	STATE EOCs: FL/MS/ND: Severe Weather TX: Ongoing Threats AZ/CO/UT: SW Border HI: Wildfires NC: Elections OK/KS: Fire Weather
Volunteer Force	
Rostered 7,691 (+3)	Deployed 102 (-3)
Surge Capacity Force	
Rostered 8,386	Deployed 0

N-IMATs	
2-5 Teams Available	
Red	
White	
Blue	
Gold	
HS	
R-IMATs	
≥ 7 Teams Available	
I	ME
II	1
III	3
IV-1	
IV-2	
V	MI
VI-1	
VI-2	
VII	
VIII	2
IX-1	CA
IX-2	Personnel
X	WA
Fully Mission Capable (FMC)	
Partially Mission Capable (PMC)	
Not Mission Capable (NMC)	
Deployed	

REGIONAL BREAKDOWN			
	JFO/VJFO	DR	EM
I	4/0	12	3
II	2/1	4	0
III	1/0	1	0
IV	5/1	21	1
V	1/0	3	0
VI	1/0	1	0
VII	2/0	2	0
VIII	1/0	3	0
IX	1/1	18	0
X	1/2	9	0



**Legend**

- FEMA HQ
- Regional Offices
- Joint Field Offices
- Direct Housing Mission
- Active RSF Missions
- Pre-Positioned Sites
- Federal Staging Area
- Incident Support Base
- Distribution Center
- Temporary Housing Storage Area/Site
- Large Fires
- State Activation
  - Full
  - Partial
  - Monitoring
  - Declared Counties

## IM Workforce

13,788 (-15) Assigned  
 4,130 (-57) Unavailable  
 5,390 (+56) Deployed

---

31% / 4,268 (+81) Available

## IM Cadre Availability

8 Cadres ≤ 25% Availability

Environmental Planning and Historic Preservation: 20% (164/801);  
 Field Leadership: 18% (27/148); Hazard Mitigation: 23% (286/1234);  
 Operations: 19% (62/333); Public Assistance: 18% (396/2,198); Planning: 11% (52/460);  
 Safety: 8% (7/83); Security: 22% (30/136)

## MERS

> 66%

36 Assigned  
 0 Unavailable  
 1 Deployed

---

35 Available

## US&R

> 66%

28 Assigned  
 2 (+1) Unavailable  
 0 Deployed

---

26 (-1) Available

## FCO

≤ 1 Type I

50 Assigned  
 7 Unavailable  
 38 (23 FCOR) Deployed

---

5 Available

# Joint Preliminary Damage Assessments

Region	State / Location	Incident	IA	Number of Counties		Start - End
			PA	Requested	Complete	
I	RI	Flooding Jan 8-17	IA	3	3	2/15 - 2/22
			PA	4	0	TBD
	VT	Winter Storm / High Winds Jan 9-10	IA	0	0	N/A
			PA	5	0	2/12 - TBD
	MA	Flooding Jan 10-13	IA	0	0	N/A
			PA	4	0	2/15 - TBD
NH	Flooding Jan 9 and continuing	IA	0	0	N/A	
		PA	10	0	2/20 - TBD	
VI	CNO*	Severe Winter Weather Jan 12-16	IA	0	0	N/A
			PA	1	0	TBD
IX	CA	Atmospheric River Jan 31-Feb 7	IA	6 (+1)	6 (+2)	2/13 - 2/23
			PA	15	0	2/13 - TBD
X	OR	Winter Storms Jan 12-20	IA	0	0	N/A
			PA	12	0	2/12 - TBD
	WA	Winter Storms Jan 5-22	IA	0	0	N/A
			PA	17 (+5)	0	2/26 - TBD

\*Choctaw Nation of Oklahoma



FEMA

National Watch Center

# Declaration Approval – New Hampshire

**Declaration:** Major Disaster Declaration – FEMA-4761-DR-NH

**Date Requested:** Feb 15

**Date Approved:** Feb 27

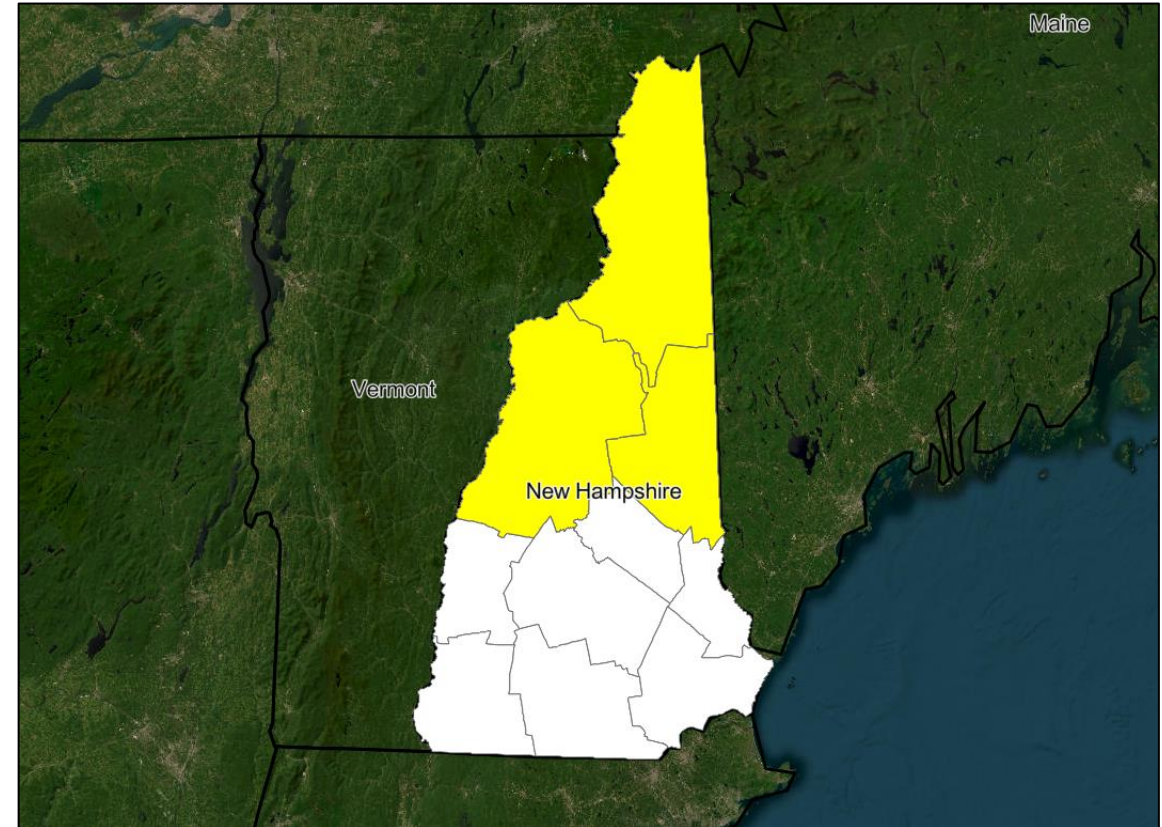
**Incident:** Severe Storm and Flooding

**Incident Period:** Dec 17-21

**Provides:**

- **PA:** 3 counties
- **Hazard Mitigation:** Statewide

**FCO:** William F. Roy



■ PA



**FEMA**

National Watch Center

# Declaration Requests in Process – 10

State / Tribe / Territory – Incident Description	Type	IA	PA	HM	Requested
OH – Train Derailment	DR	X	X	X	Jul 3
KY – Severe Storms, Tornadoes, Straight-Line Winds, and Flooding – DENIED	DR	X			Oct 23
AK – Severe Storms, Flooding, and Landslides	DR	X	X	X	Jan 8
PA – Severe Storms and Flooding (Appeal)	DR		X		Jan 20
AK – Permafrost Degradation	DR		X	X	Jan 24
SC – Severe Storm and Tornadoes	DR	X			Feb 2
FL – Severe Storm, Straight-Line Winds, and Tornadoes	DR	X	X	X	Feb 5
NH – Severe Storm and Flooding – APPROVED	DR		X	X	Feb 15
IA – Severe Winter Storms and Snowstorm	DR		X	X	Feb 13
VT – Severe Storm and Flooding	DR		X	X	Feb 14
WCA* – Severe Storm, Landslides, and Mudslides	DR	X	X	X	Feb 18
ME – Severe Storms and Flooding	DR	X	X	X	Feb 26

\*Wrangell Cooperative Association



**FEMA**

# Declaration Amendments

Declaration	Number	Issued	Action
FEMA-4754-DR-ME	1	Feb 27	Adds one county for Public Assistance
FEMA-4756-DR-WV	1	Feb 27	Adds three counties for Public Assistance



**FEMA**



# FEMA

Helping people before, during, and after disasters.



*Scan to subscribe to this briefing.*