

The Disaster Center is dedicated to the idea that disaster mitigation is cost effective and individuals pursuing their own interest are the greatest potential force for disaster reduction.

Please consider making a small donation to the Disaster Center



When disaster mitigation is cost effective, we are on the road to bringing disasters to an end.



FEMA

Daily Operations Briefing

Wednesday, February 19, 2020

8:30 a.m. ET

National Current Operations & Monitoring



FEMA

Significant Incidents or Threats:

- Heavy snow possible – Central Rockies and Central Plains
- COVID-19

Tropical Activity:

- South Pacific – Invest 96P – Medium chance

Declaration Activity: None

Southern Pacific – Invest 96P



Situation

Invest 96P

- 306 miles WNW of Pago Pago, AS, moving SE
- Maximum sustained winds 23 – 29 mph
- Potential for development of a significant tropical cyclone within the next 24 hours: MEDIUM
- High Wind Warning for American Samoa through today; Storm, and Gale Warnings in effect until further notice for American Samoa coastal waters out to 46 miles

Lifeline Impacts

Food, Water, Shelter

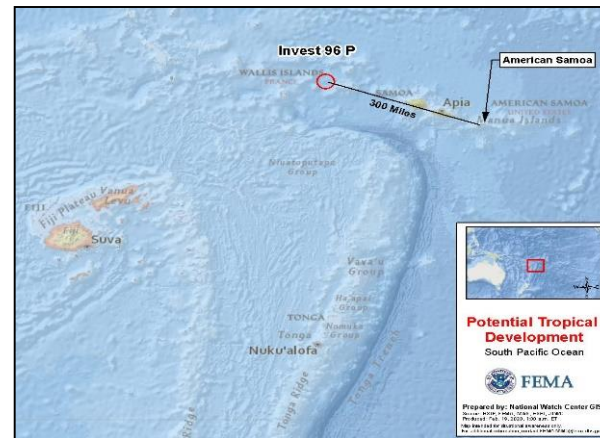
- 5 shelters open with 113 occupants (*ARC Midnight Shelter Count*)
- Boil Water Notice in effect, water is accessible through EPA certified water vending machines

Energy:

- Fuel shipment scheduled to arrive February 20
- Localized power outages; power restoration underway

Communications:

- 26 out of 31 cell service site are operational; of the 5 non-operational, 2 are damaged and 3 require power or are being assessed



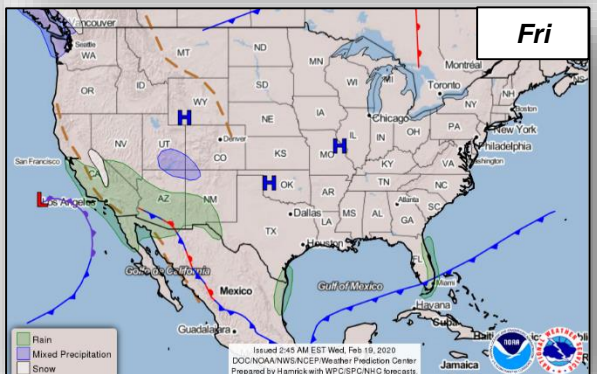
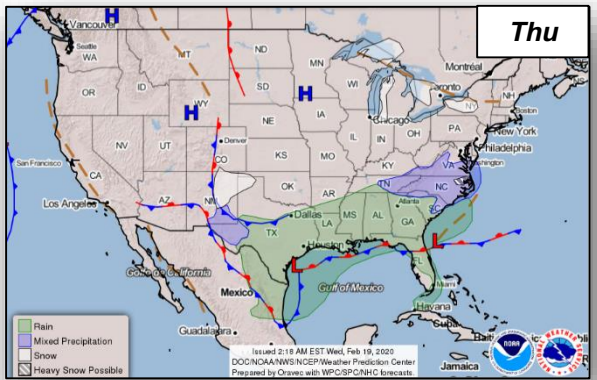
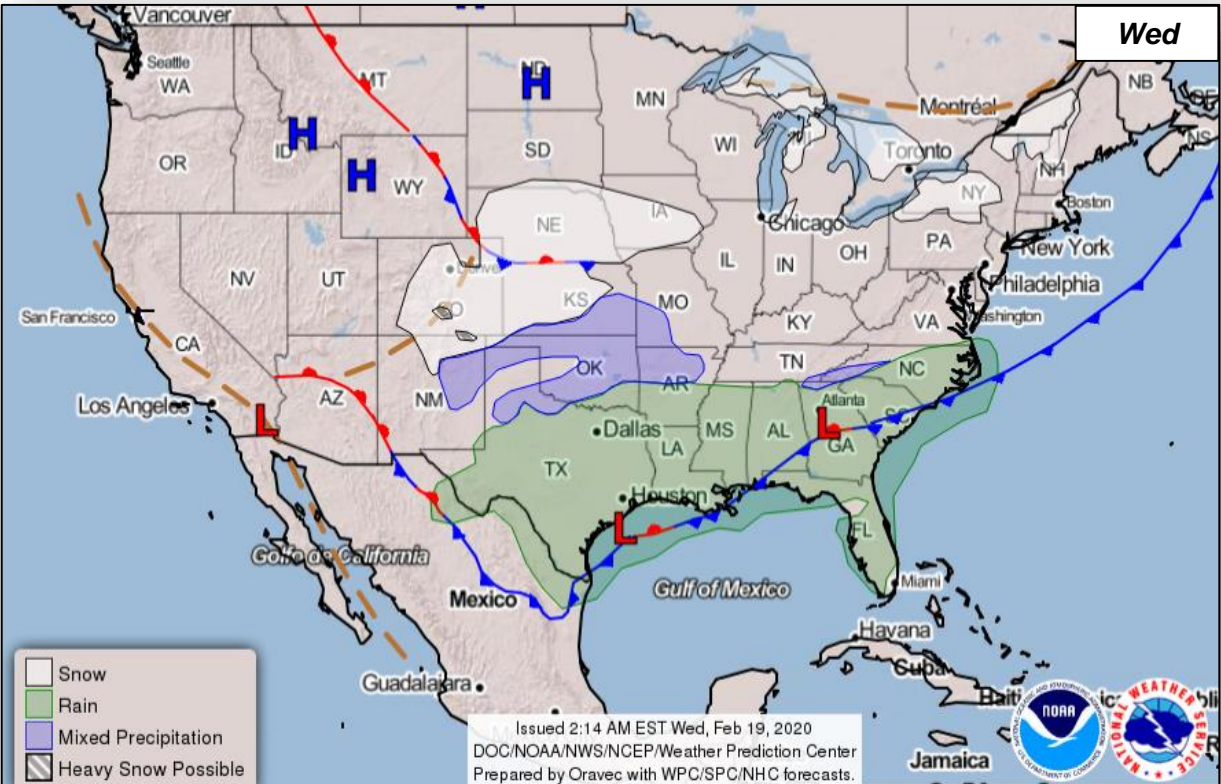
Local Response

- American Samoa EOC at Full Activation (already activated for measles outbreak); no requests for FEMA assistance

Federal Response

- Region IX RWC at Steady State; continues to monitor
- Region IX deployed personnel to AS
- NWC at Steady State, continues to monitor
- MERS assets deployed to American Samoa
- National ISB team deployed to Distribution Center in Hawaii
- DoD deployed 3 LNOs to American Samoa
- USACE deployed 3 LNOs to American Samoa

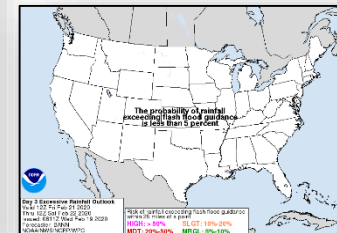
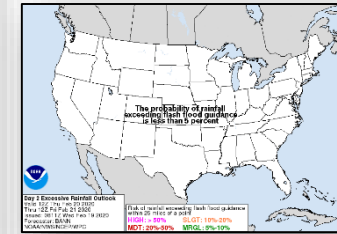
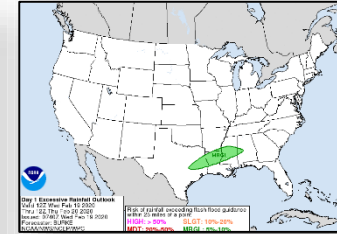
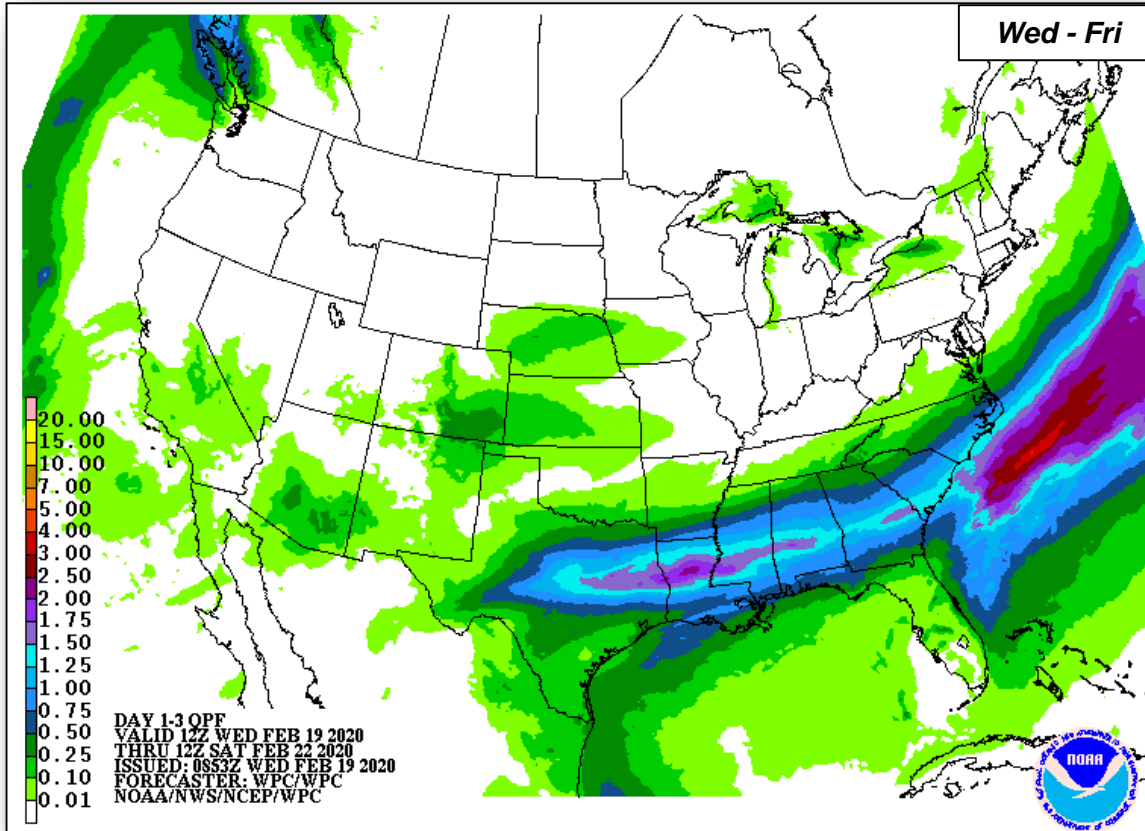
National Weather Forecast



Precipitation & Excessive Rainfall



FEMA



Joint Preliminary Damage Assessments



FEMA

Region	State / Location	Event	IA/P A	Number of Counties		Start – End
				Requested	Completed	
IV	SC	Severe Weather & Flooding Feb 6	IA	1	0	2/17 – TBD
			PA	7	0	2/17 – TBD
X	OR	Severe Flooding Feb 5-10	IA	1	0	2/19 – TBD
			PA	3	0	2/24 – TBD

Declaration Requests in Process – 4

State / Tribe / Territory – Incident Description	Type	IA	PA	HM	Requested
TX – Severe Storms, Straight-line Winds, and Tornadoes	DR		X	X	Jan 13
AK – Severe Storms and Flooding	DR		X	X	Feb 6
WI – Severe Winter Storm and Flooding	DR		X	X	Feb 10
MS – Severe Storms, Tornadoes, Straight-line Winds, and Flooding	DR		X	X	Feb 10

FEMA Common Operating Picture



FEMA

FEMA HQ	
NWC	NRCC
Monitoring	Gold

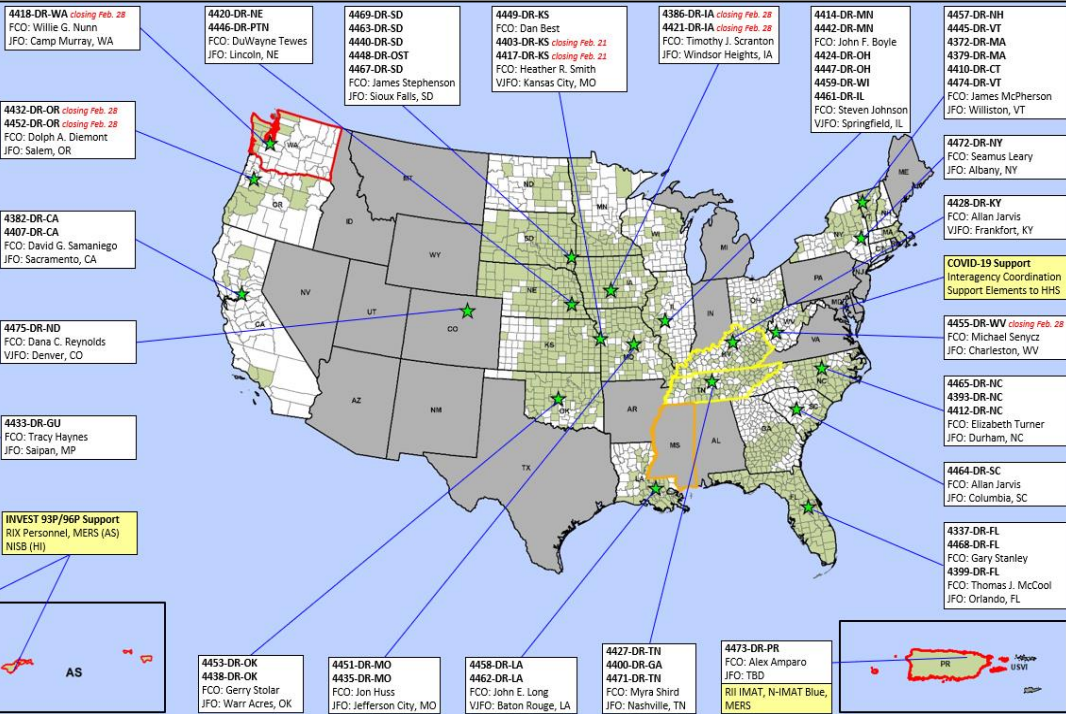
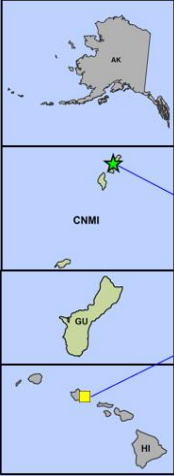
FEMA REGIONS		
WATCH	RRCC	
Monitoring	I	Rostered
Monitoring	II	Rostered
Monitoring	III	Rostered
Monitoring	IV	Rostered
Monitoring	V	Rostered
Monitoring	VI	Rostered
Monitoring	VII	Rostered
Monitoring	VIII	Rostered
Monitoring	IX	Rostered
Monitoring	X	Rostered

Notes:

AS: Measles / Invest 96P
 KY: Flooding
 MS: Flooding
 PR: Earthquake
 TN: Severe Wx
 WA: Coronavirus

- Major Disasters (DR): 51
 Emergency Disasters (EM): 0
 JFOs: 16 / VJFOs: 5
 Staging Area
 Distribution Center (DC)
 Declared County
 Fully Activated
 Partially Activated
 Monitoring

As of 3:00 a.m. ET February 19, 2020
 Created by FEMA NWC



N-IMATs	
2 Teams	
Red	
Blue	
Gold	

R-IMATs	
≥ 7 Teams	

I	3
II	PR
III	
IV-1	2
IV-2	
V	1
VI-1	
VI-2	
VII	
VIII	
IX-1	
IX-2	
X	
FMC	PMC
NMC	Deployed

Team:	US&R	MERS	FCOs	FDRCS	IM WORKFORCE
Status	>66%	>66%	≤ 1 Type I	≤ 1	
Assigned:	28	36	42	11	14,114 ▲
Unavailable:	0	0	0	0	3,805 ▲
Deployed:	0	1	34	10	5,351 ▼
Available:	28	35	8	1	4,958 / 35% ▼

IM CADRE AVAILABILITY SUMMARY	
Cadres with 25% or Less Availability	
EHP 17% (102/617); FL 23% (37/162); HM 25% (311/1,238); PA 19% (571/3,051)	



FEMA

FEMA's mission is helping people before, during, and after disasters.

Click [here](#) to subscribe to this briefing.