

FEMA National Watch Center

# Daily Operations Briefing

Monday, February 6, 2023

8:30 a.m. ET



**FEMA**

# National Current Ops / Monitoring

---

## New Significant Incidents / Ongoing Ops

- M7.8 and M7.5 Earthquakes – Turkey
- Train Derailment and Fire – Ohio

## Hazard Monitoring

- Heavy snow – Northern Intermountain
- Freezing rain – Upper Mississippi Valley to Great Lakes

---

## Disaster Declaration Activity

- No new declaration activity

## Event Monitoring

- State of the Union Address – Washington, DC (Feb 7)



**FEMA**

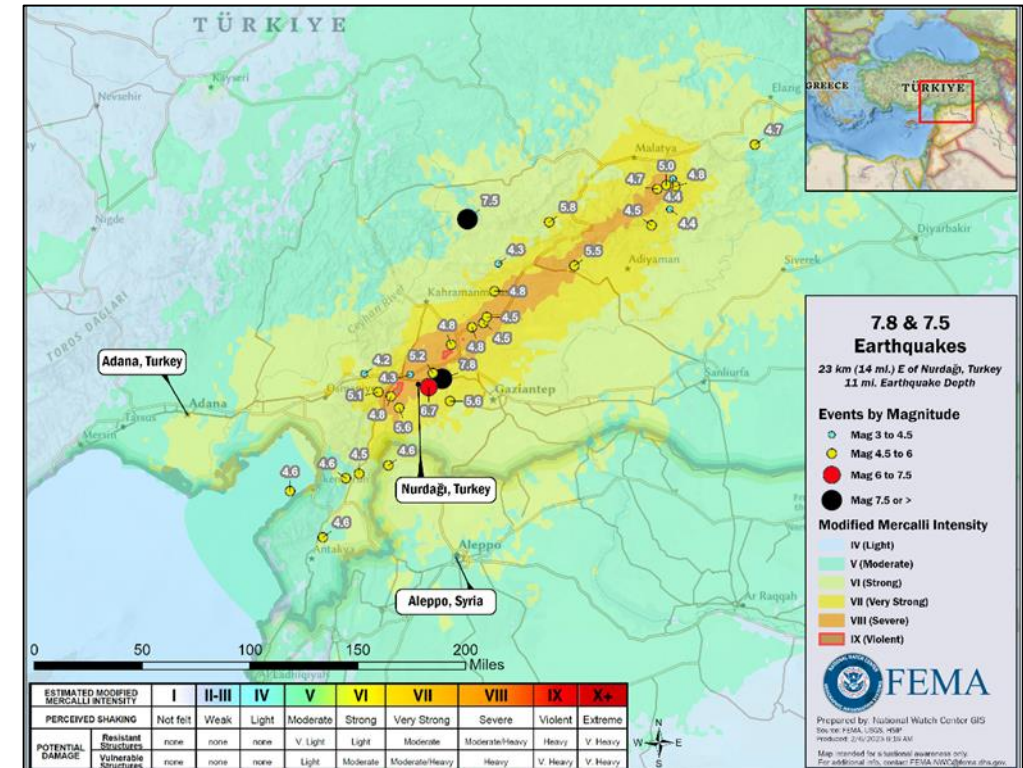
# M7.8 and M7.5 Earthquakes – Southern Turkey

**Current Situation:** Sunday, at 8:17 p.m. ET, a magnitude 7.8 earthquake occurred 14 miles east of Nurdagi (pop. 41k), Turkey, and 95 miles west of Adana (pop. 1.85 million) at a depth of 11 miles.

- Red PAGER alert for shaking-related fatalities and economic losses – high casualties and extensive damage are probable, and the disaster is likely widespread
- Level IX on the Modified Mercalli Intensity (MMI) scale; 70k exposed to violent shaking, 540k exposed to severe shaking
- Unconfirmed media reports of numerous injuries (in the thousands) and fatalities (in the hundreds) and extensive damage
- Portions of northern Syria were also severely impacted as the earthquake occurred about 100 miles from Aleppo
- Numerous aftershocks continue, the largest was a M6.7

Today at 5:24 a.m. ET a magnitude 7.5 earthquake occurred near Ekinozu (pop. 6k), Turkey approximately 125 miles from Nurdagi

- Orange PAGER for shaking-related fatalities and economic losses; significant casualties and damage likely
- Level VIII on Modified Mercalli Intensity scale – 132k exposed to severe shaking
- At 5:35 a.m. ET an aftershock of magnitude 5.8 occurred ; Green PAGER for fatalities and economic losses; MMI of VII – 3k exposed to very strong shaking



## FEMA / Federal Response:

- No requests for U.S. Federal assistance
- USAID-US&R advises that VA-TF1 and CA-TF2 are on Alert Order



**FEMA**

# Train Derailment and Fire – Ohio

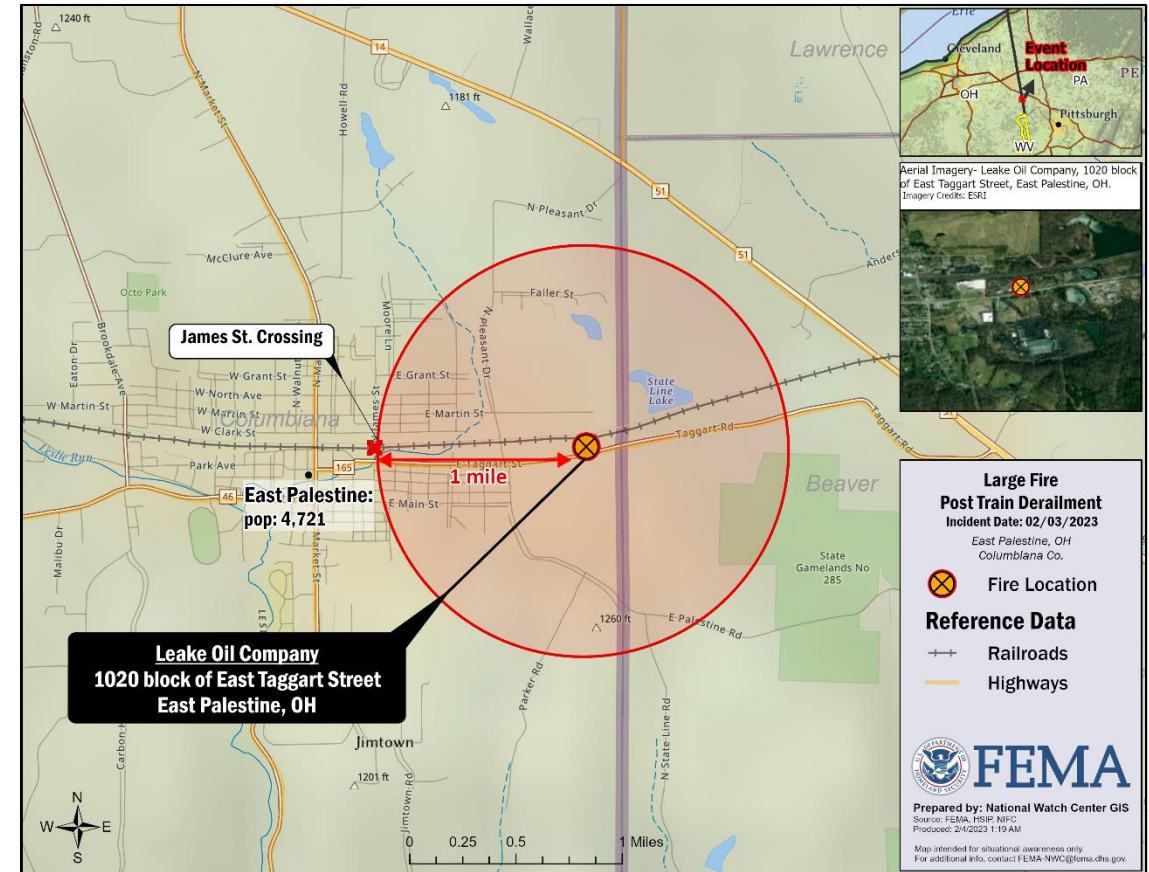
**Current Situation:** On Friday at 8:00 p.m. ET a train derailment occurred 20 miles south of Youngstown Ohio. A total of 50 cars derailed, 5 containing Vinyl Chloride causing a fire. An evacuation order remains in effect for a 1 mile radius.

## State / Local Response:

- A State of Emergency declared for the Village of East Palestine
- An evacuation order remains in place
- HAZMAT teams activated
- 1 shelter open

## FEMA / Federal Response:

- EPA continues to monitor air quality
- IMAAC modelling remains open in support of the EPA
- No request for FEMA assistance
- FEMA NWC and Region V continue to monitor



FEMA

# State of the Union Address – Washington, DC

**Current Situation:** On Feb 7, the President will deliver the State of the Union Address to a Joint Session of Congress in Washington, DC. The event has been designated a National Special Security Event; FEMA has primary responsibility for the coordination of federal emergency management planning.

## State / Local Response:

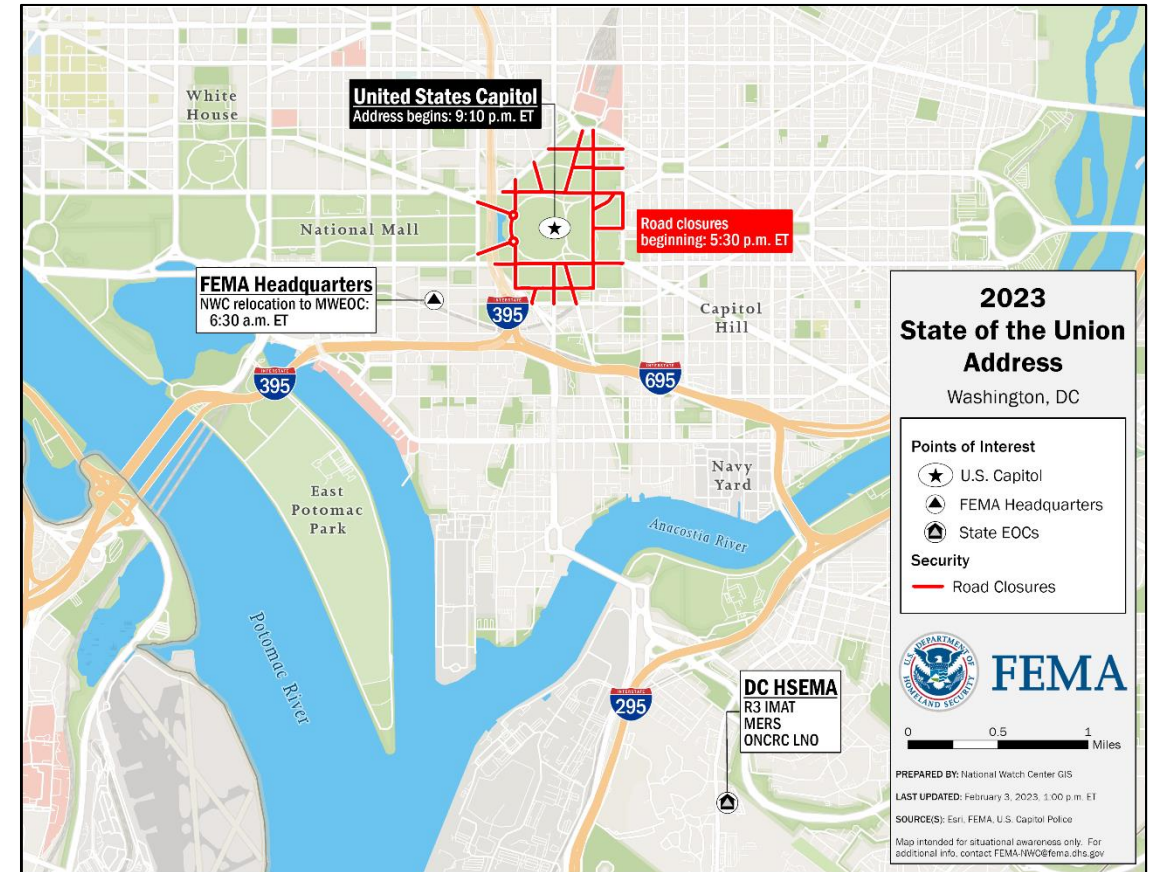
- DC HSEMA will go to Full Activation at 3:00 p.m. ET, Feb 7

## FEMA Region III Response:

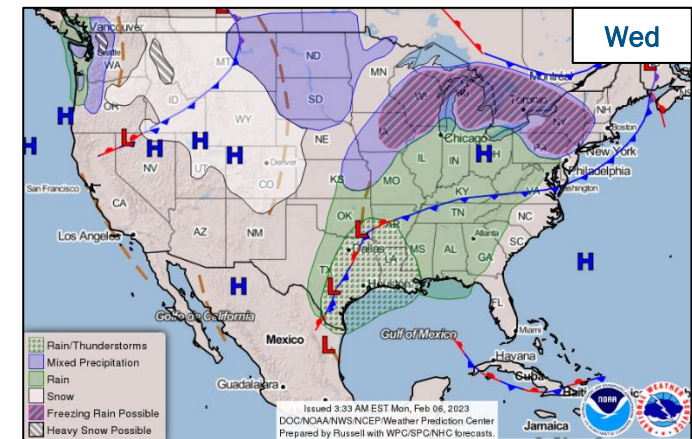
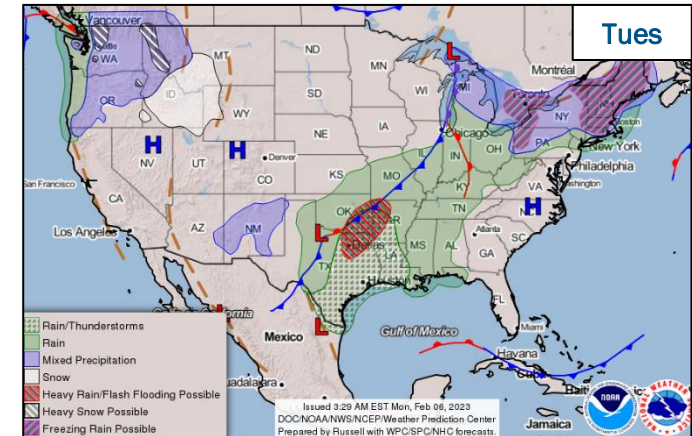
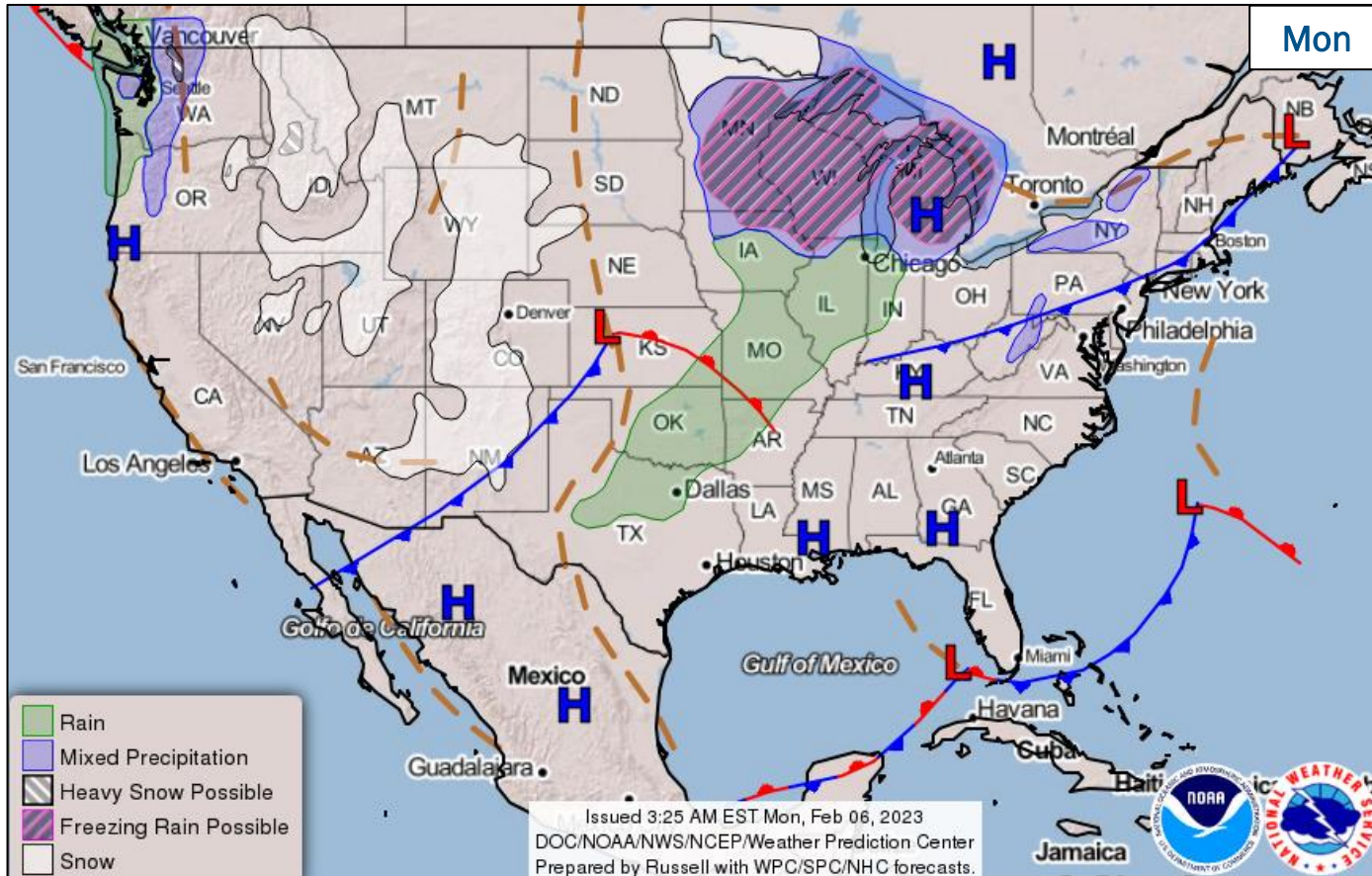
- R3 RRCC is rostered; will activate to Level III on Feb 7
- R3 IMAT will deploy to DC HSEMA

## FEMA HQ Response:

- NWC will relocate to MWEOC at 6:30 a.m., Feb 7
- NWC will activate its Enhanced Watch at 3:00 p.m., Feb 7
- NRCS Blue Team, ESFs, N-IMAT Blue, CMCU, DEST on alert
- US&R issued ESF#9 Advisory
- MERS providing communications and mobile command post functions to Region III and other federal agencies



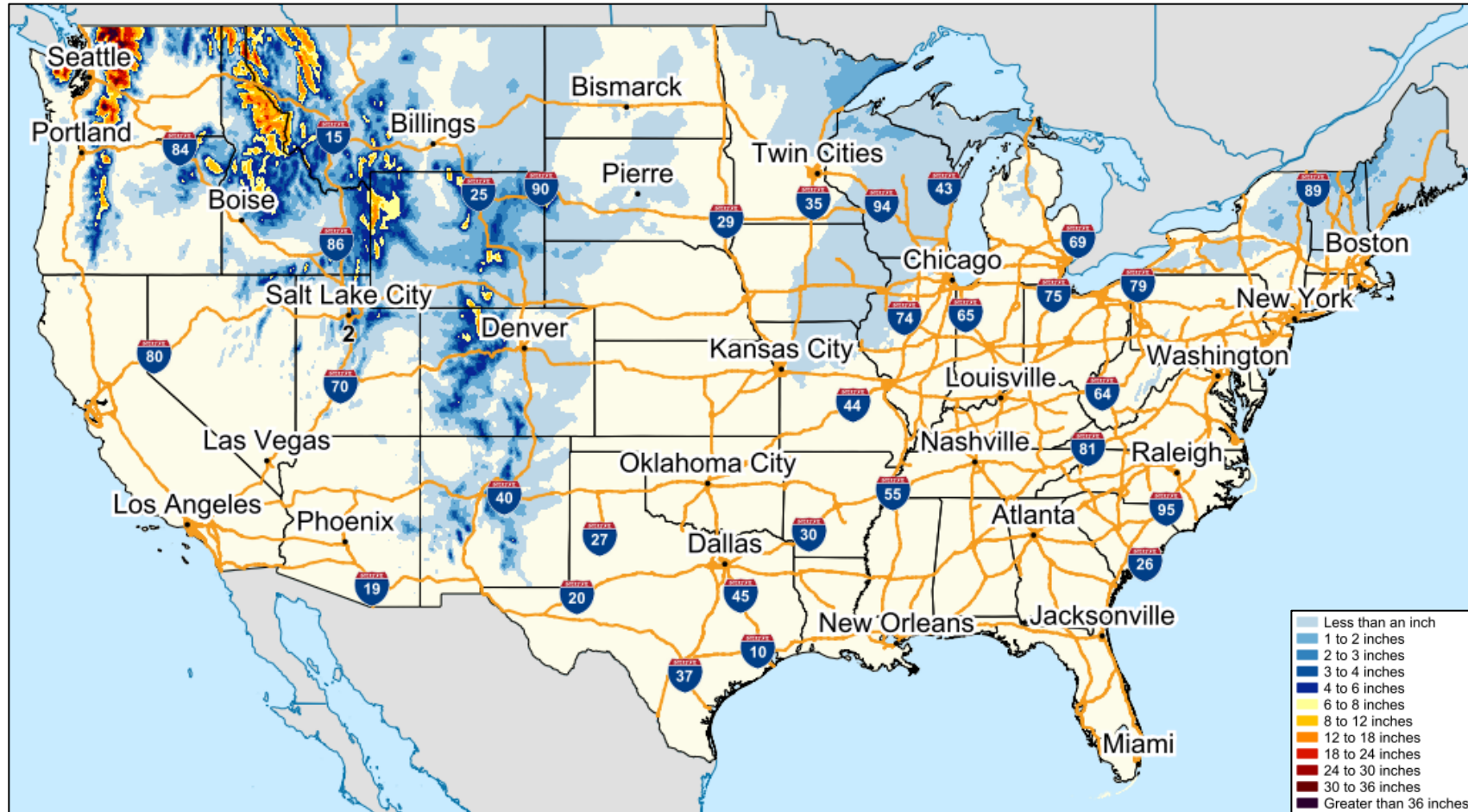
# National Weather Forecast



FEMA

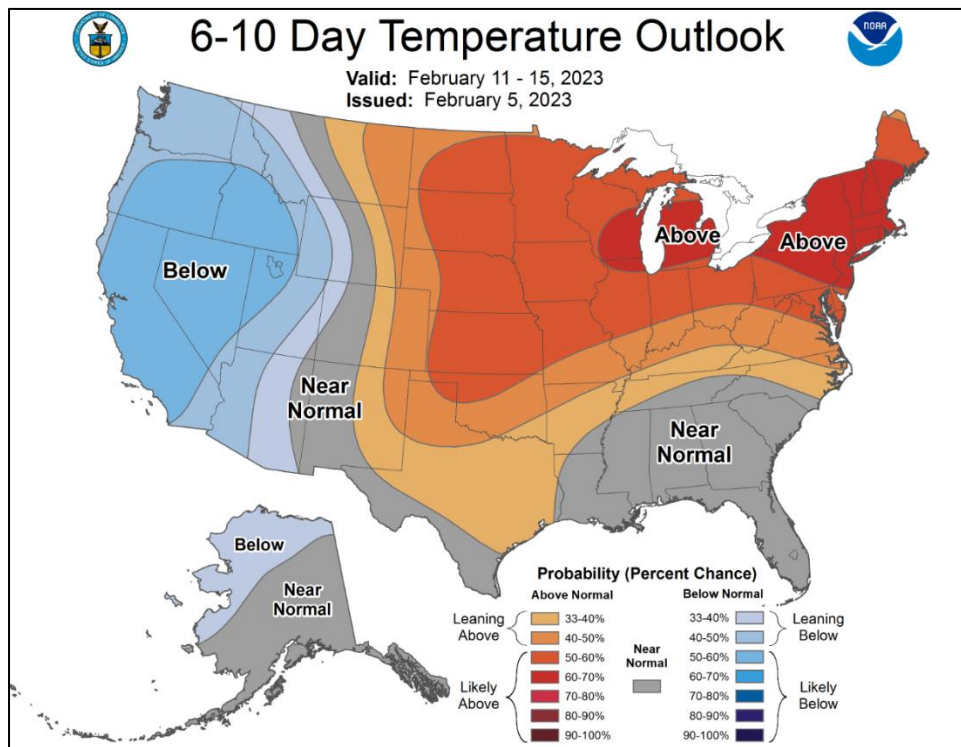
National Watch Center

# Snowfall Forecast

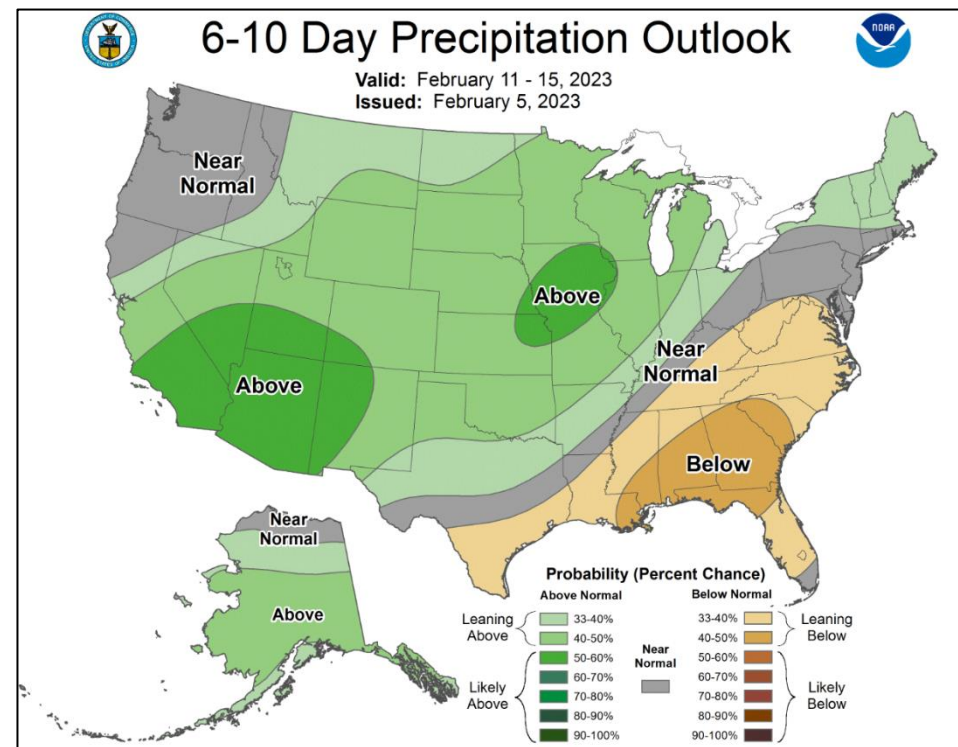


FEMA

# Long Range Outlooks – Feb 11-15



6-10 Day Temperature Probability



6-10 Day Precipitation Probability



FEMA

National Watch Center



# FEMA Common Operating Picture

**12**  
Joint Field  
Offices

**9**  
Virtual Joint  
Field Offices

**52**  
Major  
Disasters

**10**  
Emergency  
Declarations

Monday  
February 6, 2023  
8:30 a.m. ET

FEMA HQ		
NWC	NRCC	
Monitoring	Rostered	
FEMA REGIONS		
Watch	RRCC	
Monitoring	I	Rostered
Monitoring	II	Rostered
Monitoring	III	Rostered
Monitoring	IV	Rostered
Monitoring	V	Rostered
Monitoring	VI	Rostered
Monitoring	VII	Rostered
Monitoring	VIII	Rostered
Monitoring	IX	Rostered
Monitoring	X	Rostered
Notes:		
RWCs/RRCCs:	STATE EOCs:	
	<ul style="list-style-type: none"> <li>PR: TC Fiona</li> <li>TN/TX/WA/NI/MS/ME: Winter Weather</li> <li>AL/GA: Severe Weather</li> <li>FL: TC Ian</li> <li>IL: SW Border Bus Rec &amp; Coord</li> <li>CA/NM: Flooding</li> <li>NM: Wildfires</li> <li>CO: Avian Influenza, Public Health Support and Suncor Refinery</li> <li>AZ/CO: SW Border Coordination</li> <li>AS/CA: Seismic Activity</li> <li>OR: RSV, Influenza Surge, and Homeless State of Emergency</li> <li>WA: European Green Crabs and Flu &amp; RSV Season</li> </ul>	
Surge Capacity Force		
Rostered	Deployed	
7,626	0	

N-IMATs	
2-4 Teams Available	
Red	
White	Reconstituting
Blue	
Gold	
R-IMATs	
≥ 7 Teams Available	
I	1
II	
III	
IV-1	FL
IV-2	AL
V	GA
VI-1	Personnel
VI-2	
VII	2
VIII	
IX-1	CA
IX-2	CA
X	Personnel

REGIONAL BREAKDOWN			
	JFO/VJFO	DR	EM
I	2/0	5	0
II	2/3	5	4
III	0/0	3	0
IV	2/1	10	3
V	2/0	4	0
VI	1/1	2	3
VII	0/1	2	0
VIII	1/1	2	0
IX	0/1	7	0
X	2/1	12	0



Alaska



Northern Mariana Islands



Guam

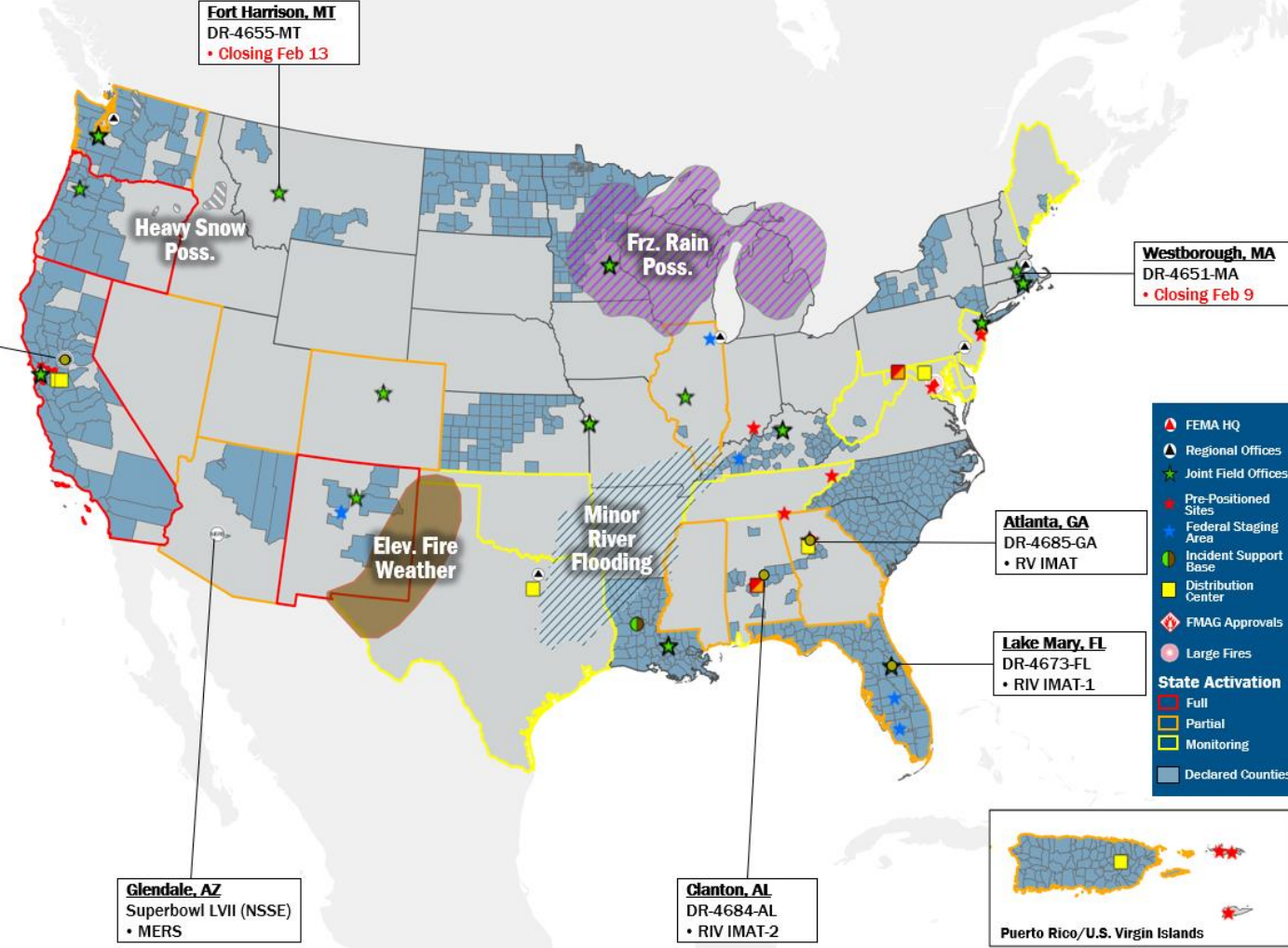


American Samoa



Hawaii

**Sacramento, CA**  
DR-4683-CA  
• MERS  
• RIX IMAT-1/2



- ▲ FEMA HQ
- ▲ Regional Offices
- ★ Joint Field Offices
- Pre-Positioned Sites
- ▲ Federal Staging Area
- Incident Support Base
- Distribution Center
- ◆ FMAG Approvals
- Large Fires
- State Activation**
- Full
- Partial
- Monitoring
- Declared Counties

Puerto Rico/U.S. Virgin Islands

## IM Workforce

13,325 Assigned  
3,850 (-59) Unavailable  
5,845 Deployed

---

27% / 3,630 (+59) Available

## IM Cadre Availability ≤ 25% Availability

Civil Rights: 18% (22/122); Disability Integration: 8% (5/63); Environmental Planning and Historic Preservation: 21% (174/835); Field Leadership: 14% (20/145); Hazard Mitigation: 13% (156/1,232); Human Resources: 22% (35/161); Logistics: 22% (304/1,403); Operations: 16% (60/372); Public Assistance: 15% (331/2,176); Planning: 16% (79/479); Safety 13% (10/75); Security: 19% (28/145)

### MERS

≥ 66%

36 Assigned  
0 Unavailable  
0 Deployed

---

36 Available

### US&R

≥ 66%

28 Assigned  
3 Unavailable  
0 Deployed

---

25 Available

### FCO

≤ 1 Type I

50 Assigned  
3 Unavailable  
46 (24 FCOR) Deployed

---

1 Available

# Joint Preliminary Damage Assessments

Region	State / Location	Incident	IA	Number of Counties		Start - End
			PA	Requested	Complete	
I	ME	Winter Storm Dec 23-24	IA	0	0	N/A
			PA	8	1	1/9 - TBD
	NH	Winter Storm Dec 23-25	IA	0	0	N/A
			PA	8	0	1/17 - TBD
	VT	Winter Storm Dec 23	IA	0	0	N/A
			PA	9	0	1/13 - TBD
II	NY	Severe Winter Storm Dec 23	IA	0	0	N/A
			PA	2	0	1/24 - TBD
IV	TN	Severe Winter Weather Dec 22-27	IA	0	0	N/A
			PA	17	16	1/19 - TBD
X	OR	Severe Winter Storms Dec 23-31	IA	0	0	N/A
			PA	9	0	2/13 - TBD



FEMA

# Declaration Requests in Process – 6

State / Tribe / Territory – Incident Description	Type	IA	PA	HM	Requested
Choctaw Nation of Oklahoma – Tornadoes	DR		X	X	Jan 3
ND – Severe Winter Storms, Snowstorm, and Straight-line Winds	DR		X	X	Jan 10
Oglala Sioux Tribe – Severe Winter Storms and Snowstorms	DR		X	X	Jan 19
Rosebud Sioux Tribe – Severe Winter Storms	DR		X	X	Jan 13
HI – Mauna Loa Volcanic Eruption	DR		X	X	Jan 20
WV – Severe Storms, Flooding, Landslides, and Mudslides (Appeal)	DR	X	X	X	Jan 27



**FEMA**



# FEMA

Helping people before, during, and after disasters.



*Scan to subscribe to this briefing.*