

FEMA National Watch Center

Daily Operations Briefing

Thursday, January 13, 2022

8:30 a.m. ET



FEMA

National Current Ops / Monitoring

New Significant Incidents / Ongoing Ops

- COVID-19

Hazard Monitoring

- Heavy rain / flooding – American Samoa
- Freezing rain – Northern Intermountain; Northern Plains
- Mixed precipitation – Northwest to Northern Plains; Tennessee Valley to interior Northeast

Disaster Declaration Activity

- Major Disaster Declaration request – HI

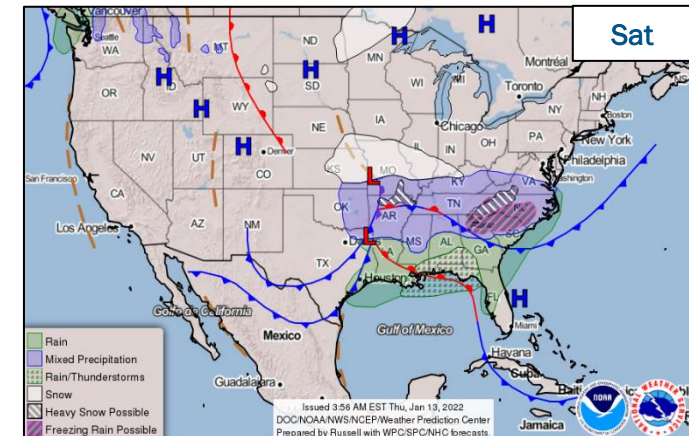
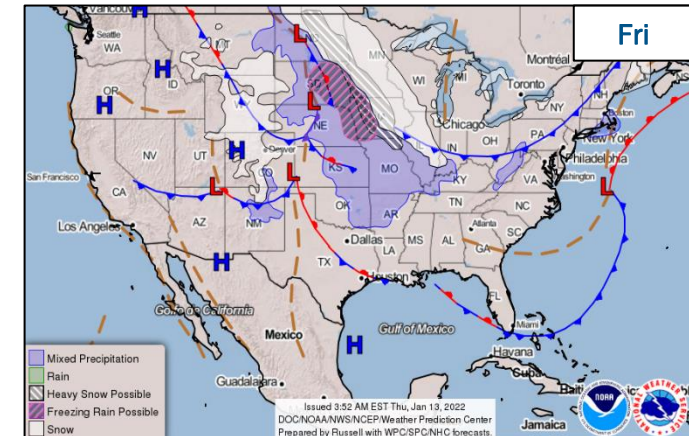
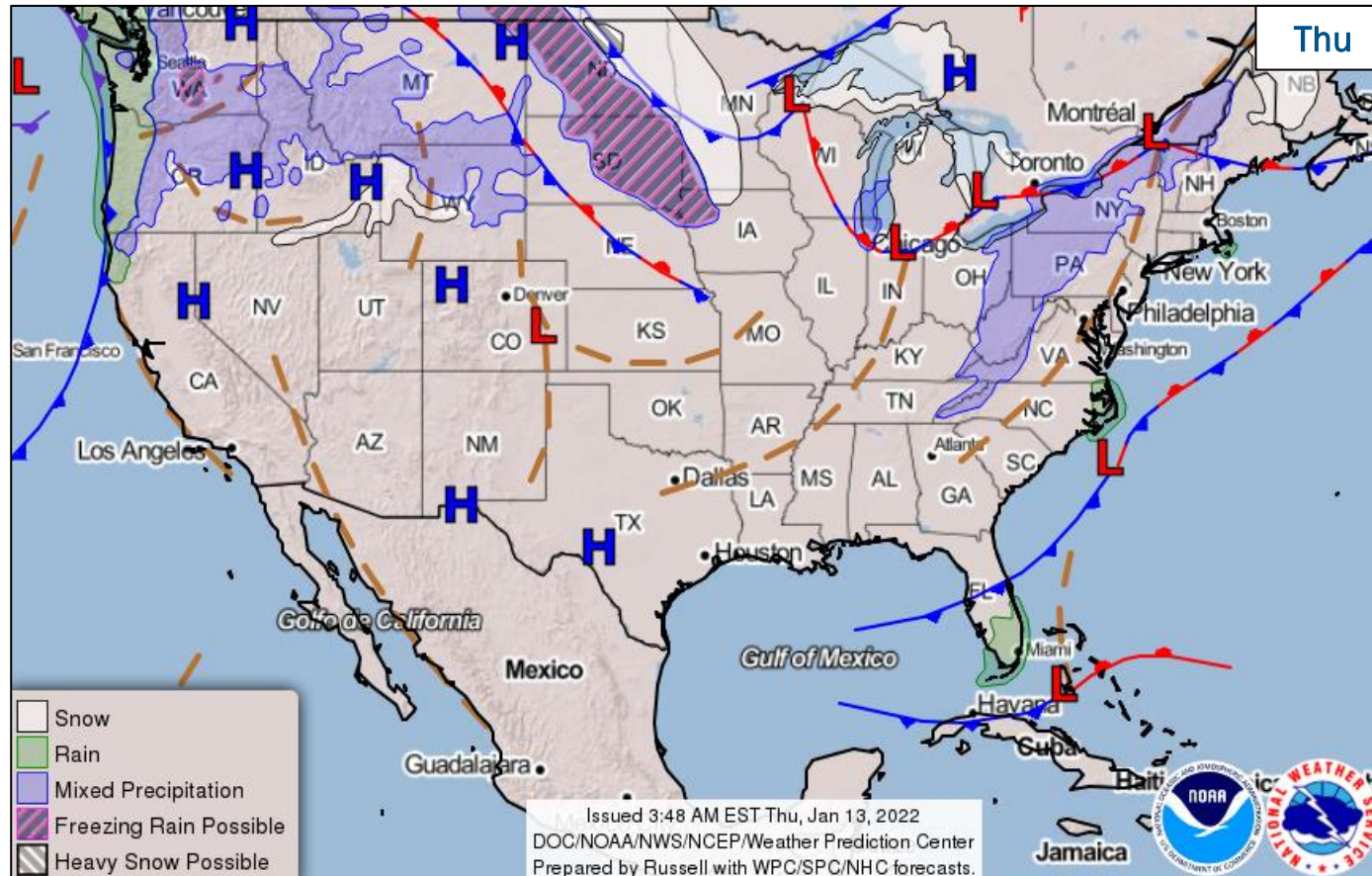
Event Monitoring

- Super Bowl LVI (Feb 9-13) – Inglewood, CA
- 2022 State of the Union Address (Mar 1) – Washington, DC



FEMA

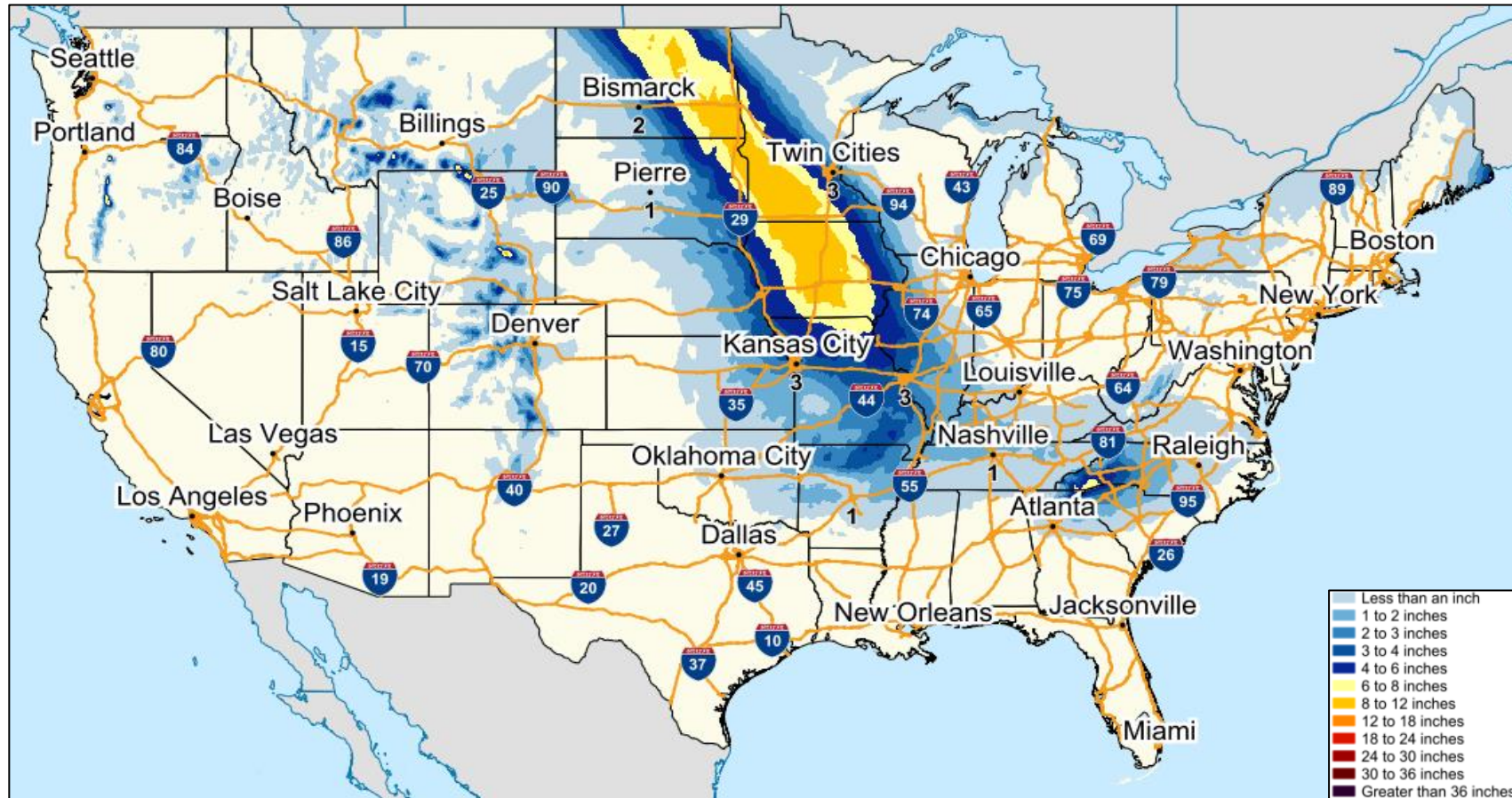
National Weather Forecast



FEMA

National Watch Center

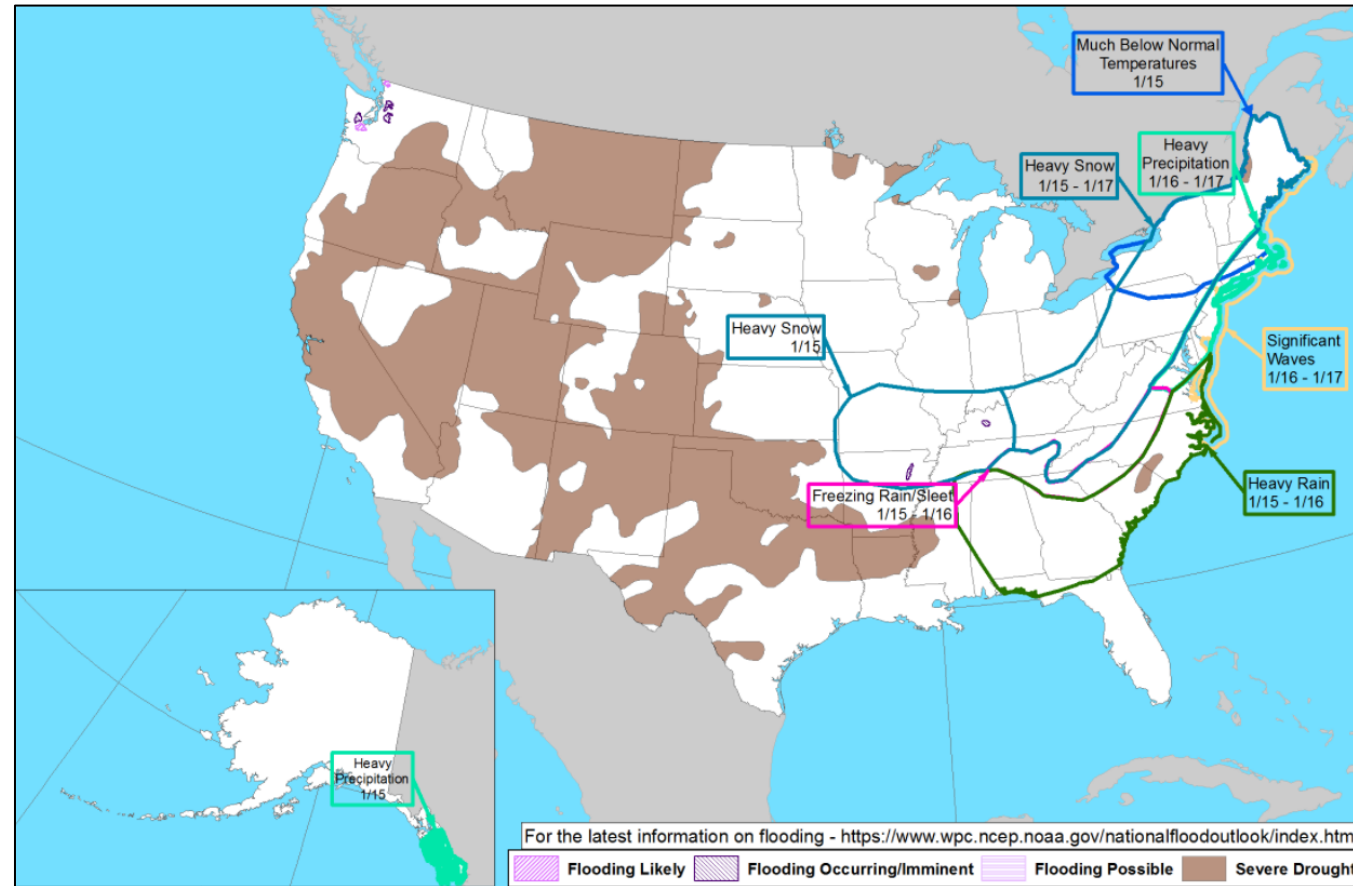
Forecast Snowfall



FEMA

National Watch Center

Hazards Outlook – Jan 15 - 19



FEMA

National Watch Center

Joint Preliminary Damage Assessments

Region	State / Location	Incident	IA	Number of Counties		Start – End
			PA	Requested	Complete	
I	ME	Coastal Storm Oct 30-31	IA	0	0	N/A
			PA	4	1	11/8 – TBD
IV	TN	Severe Storms, Straight Line Winds, and Tornadoes Dec 11	IA	18	16	12/21 – TBD
			PA	14	13 (+4)	12/27 – TBD
VII	KS	High Winds and Severe Storm Dec 15	IA	0	0	N/A
			PA	82	43 (+9)	1/4 – TBD
	NE	Severe Storms, Tornadoes, and Straight-line Winds Dec 15	IA	0	0	N/A
			PA	23	0	1/12 – TBD
	IA	Severe Storms, Tornadoes, and Straight-line Winds Dec 15	IA	0	0	N/A
			PA	75	0	1/11 – TBD



FEMA

Declaration Request – Hawaii

Declaration Type: Major Disaster – HI

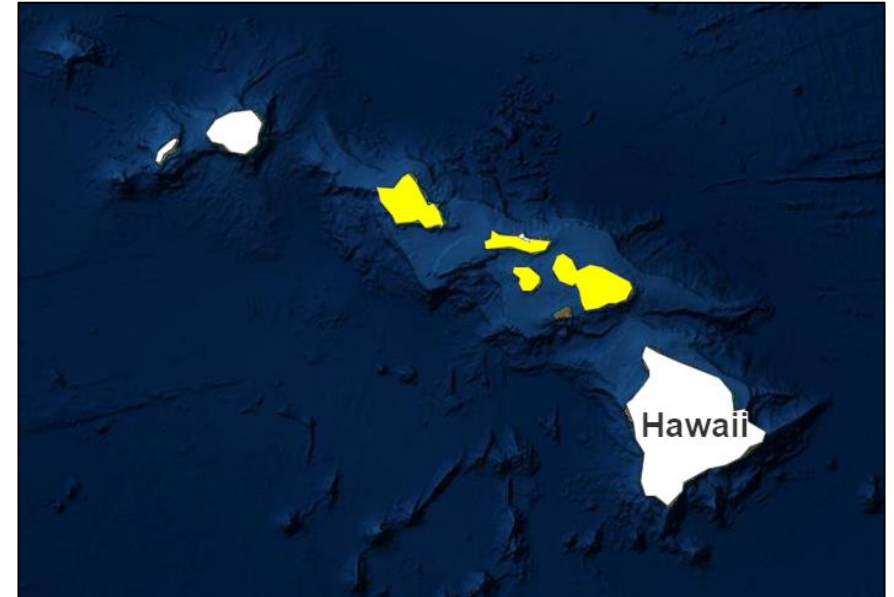
Requested: Jan 11

Incident: Severe Storms, Flooding, Landslides & Mudslides

Incident Period: Dec 4-10

Requested:

- **PA:** 2 counties
- **Hazard Mitigation:** Statewide



■ PA



FEMA

Declaration Requests in Process – 3

State / Tribe / Territory – Incident Description	Type	IA	PA	HM	Requested
AK – Severe Winter Storm, Straight-line Winds, Flooding, Landslides, and Mudslides	DR		X	X	Dec 28
TN – Severe Storms, Straight-line Winds, and Tornadoes	DR	X	X	X	Dec 28
HI – Severe Storms, Flooding, Landslides, and Mudslides	DR		X	X	Jan 11



FEMA

FEMA Common Operating Picture

FEMA HQ

NWC

Monitoring

NRCC

Level III

FEMA REGIONS

Watch

Monitoring

RRCC

I

Level III

II

Level III

III

Level III

IV

Rostered

V

Alt Location

Level III

VI

Rostered

VII

Rostered

VIII

Level III

IX

Rostered

X

Level III

Notes:

NRCC & RRCCs:
(COVID-19)

RV RWC: Day shift,
Monitoring/Night shift,
remote operations

RVII RWC: COVID-19
Protocols

STATE EOCs:

NJ & NY: Remnants of
Ida

PR: Earthquakes

CA & AK: Winter
Weather

AS, KY, & TN: Severe
Weather

WA: Winter Weather &
Flooding

Major Disasters (DR): 63

Emergency Disasters (EM): 15

JFOs: 15 / VJFOs: 10

Staging Area

Declared County
(non-COVID-19 Declarations)

Fully Activated

Partially Activated

Monitoring

As of 8:00 a.m. ET January 13, 2022
Created by FEMA NWC

The figure displays a map of the United States divided into FEMA Regions (I through X). Each region is color-coded based on its operational status: Red indicates 'Fully Activated', White indicates 'Partially Activated', Blue indicates 'Monitoring', and Gold indicates 'Staging Area'. The map also shows state boundaries and major cities. Numerous callout boxes are present, each detailing a specific disaster or emergency response team. These include information such as the disaster type (e.g., DR-AK, EM-TN), the responsible Federal Coordinating Officer (FCO) or Joint Field Office (JFO), and the location of the staging area or JFO. For example, in Region I, there's a callout for '4589-DR-AK' with FCO Toney L. Raines at Bothell, WA. In Region X, there's a callout for '4604-DR-HI' with FCO Colby Stanton at Ft. Shafter, HI. The map also includes insets for Alaska and Hawaii.

Team Status	US&R ≤ 66%	MERS > 66%	FCOs ≤ 1Type I	IM WORKFORCE
Assigned:	28	36	58	14,327 (-3)
Unavailable:	10	0	2 (+1)	3,863 (-20)
Deployed:	0	0	50 (30 FCOR)	6,362 (+17)
Available:	18	36	6 (+1)	29% / 4,102

IM CADRE AVAILABILITY SUMMARY

Cadres with 25% or Less Availability

Civil Rights: 19% (22/115); Disability Integration: 24% (16/66); External Affairs: 23% (122/522);
Field Leadership: 19% (28/151); Hazard Mitigation: 20% (275/1,369); Human Resources: 19% (37/192);
Logistics: 25% (352/1,430); Operations: 22% (83/375); Public Assistance: 20% (535/2,660);
Planning: 17% (76/455)

FCO Senior Leadership COP Brief

INDIVIDUAL ASSISTANCE SUMMARY

Registrations
8K

(60-day
period completed
12/22/2021)

Individuals and
Households Program
\$9M

(Month 3 of 18
month active period)

Small Business Admin
Loans
\$5M

Housing Assistance
\$7M

NFIP Payouts
\$9M

Other Needs
Assistance
\$2M

Transitional Shelter Assistance
\$0

STAFF SUMMARY

Total Staff: 63 | Coach/Evaluators: 22

Staff by Proficiency Level

29

16

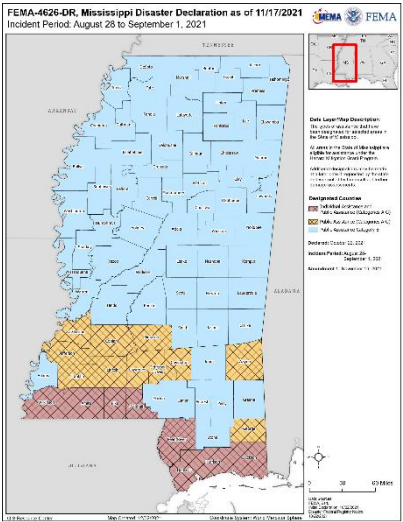
18

0% 20% 40% 60% 80% 100%

■ Qualified ■ Trainee/Candidate

INCIDENT SUMMARY

On October 22, 2021, a Major Disaster Declaration was approved for the State of Mississippi designating Individual Assistance for 8 counties, Public Assistance Categories A-G for 19 counties, and Hazard Mitigation statewide. On November 16, 2021, Amendment #1 was approved for 63 counties for emergency protective measures (Category B) including direct federal assistance, under the Public Assistance program.



PUBLIC ASSISTANCE SUMMARY

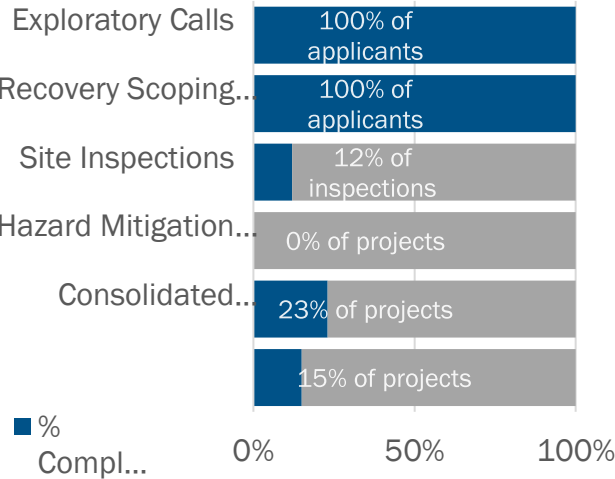
Applicants **56**

Projects **178**

\$ Obligated **\$1M**

Life of Disaster est. **\$35M**

% of Phase Complete



FCO ASSESSMENT

Priorities

- **Focus:** Deliver Integrated Recovery strategies and outcomes focusing on equity and resilience.
- **Mitigation:** Implement enhanced mitigation delivery system to increase the percentage of projects with mitigation.

Outcomes

- **Housing:** Adequate, resilient, accessible and affordable housing
- **Infrastructure:** Restored, modernized, hardened and resilient systems

TRANSITION TIMELINE



FCO Senior Leadership COP Brief

Recovery Support Functions (RSF)

Recovery Outcomes		
Housing	Housing: Adequate, resilient, accessible, and affordable housing	
	1	All survivors whose primary residences were damaged or destroyed or were displaced by the disaster have returned and re-established residence in permanent housing within the affected community
	2	Survivors can afford post-disaster permanent housing units within the affected community without post-disaster assistance
	3	Post-disaster permanent housing units in the affected community meet or exceed recognized residential codes and standards and incorporate recommended mitigation measures appropriate to the area's hazards (e.g., flooding, fire, high winds), or include resiliency measures
Economic	Economic: Sustainable, diversified and resilient economy	
	1	Business activities are resumed and restored, including those local and marginalized businesses and major employers
	2	Local and state government ability to facilitate and regulate business activities is restored
	3	Tax base and revenue streams from businesses are restored
	4	Communities have Comprehensive Economic Development Strategies that measures the recovery process
	5	Financial activities essential to credit and insurance coverage and flows are restored
Community Planning & Capacity Building	Community Recovery: Resilient recovery of SLTT communities	
	1	Community Conditions Assessment + Community Profiles
	2	Status of emergency plans, such as the Mitigation plan and Pre-Disaster Recovery Plan
	3	Community engagement and communication strategy is in place for long-term recovery plan or strategy
	4	Mitigation and recovery projects have been implemented
	5	Inclusive communications strategy developed for long-term recovery planning or strategy

Recovery Outcomes		
Infrastructure Systems	Infrastructure: Restored, modernized, hardened and resilient systems	
	1	Power systems and fuel delivery services have been repaired, modernized, and strengthened for future disasters
	2	Water systems, dams, levees, and service capacities have been repaired, modernized, and strengthened for future disasters
	3	Communication systems and services have been repaired, modernized, and strengthened against future disasters
	4	Public and private transportation systems, to include those supporting marginalized areas are repaired and reliable
	5	Government and PNP facilities have been repaired, modernized and strengthened for future disasters
Health & Social Services	HSS: Sustainable and resilient health education and social service systems	
	1	Households have safe drinking water and no hazardous and toxic materials
	2	Healthcare providers have resumed capacity to meet chronic or long-term health needs, as well as primary and emergency care
	3	Ensure survivors are provided necessary behavioral health and disaster case management services.
	4	Social Assistance programs that support vulnerable populations, e.g., have resumed delivery of financial and other materiel support and services to vulnerable segments of the community's population
	5	Schools are fully operational & providing full academic programs and can provide a safe, sanitary, and supportive environment
Natural & Cultural Resources	NCR: Restored, preserved, risk-resistant and resilient resources	
	1	Natural resources in the affected community, to include socially marginalized, have been restored to protect people and ecosystems
	2	Resources associated with entertainment, education, recreation, and tourism have been repaired, and public accessibility restored
	3	Access to raw material and other commodities that sustain the local economy has been restored
	4	Sites and artifacts associated with the community's heritage and identity have been stabilized/protected, and public accessibility to these sites has been restored

HOUSING: Adequate, resilient, accessible and affordable housing

Outcome Indicators (H1): All survivors whose primary residences were damaged or destroyed or were displaced by the disaster, have returned and re-established residence in permanent housing within the affected community

- Mississippi Registration Intake Centers (RICs)
 - State-led, FEMA and SBA-supported, open Nov. 1-13, 888 cumulative visits
- IHP after targeted outreach (as of 01/05/2022):
 - Total Targeted Case Reviews for valid registrations in declared counties – 3,016 (40%)
 - \$1M additional financial award reflects assistance after the JFO/Mississippi Registration Intake Center staffs completed case review
- IHP mitigation – 550 homeowners received notification of additional funds for hazard mitigation actions (476 roof repair, 89 water heater elevation)

INFRASTRUCTURE: Restored, modernized, hardened and resilient systems

Outcome Indicator (I5): Government and PNP facilities have been repaired, modernized, and strengthened for future disasters

- Projects mitigated in DR4576 resulted in no damage to those facilities during DR4626
 - Hancock County Water and Sewer Lift Stations
 - University of Southern Mississippi Aquaculture Tanks
- Using best practices established in the enhanced mitigation delivery system on DR4576 by educating applicants on mitigation measures early in the process, dramatically increasing the percentage of permanent work projects
 - 332 total project reviews completed, projects with HMP's applied: 112 (34%)
 - Allowed FEMA to specifically target those communities who may not have the resources to dedicate for specific resiliency efforts increasing the equitable delivery of disaster recovery services
- Public Assistance staff developed an equity based strategic plan utilizing Social Vulnerability Index (SVI) mapping to identify counties with a high SVI to position in-person Public Assistance Program Delivery Managers (PDMGs) to assist applicants through the Public Assistance process



FEMA

Helping people before, during, and after disasters.



Scan to subscribe to this briefing.