



FEMA

Daily Operations Briefing

Wednesday, November 27, 2013

8:30 a.m. EST

Significant Activity: Nov 26 – 27



Significant Events:

- Winter Storm – Southeast to Northeast
- Ohio Train Derailment

Tropical Activity:

- Atlantic – Tropical cyclone activity not expected next 48 hours
- Eastern Pacific – Tropical cyclone activity not expected next 48 hours
- Central Pacific – No tropical cyclones expected through late Thursday night
- Western Pacific – No activity threatening U.S. territories

Significant Weather:

- Heavy rain possible – Southeast to Northeast
- Heavy snow possible – Great Lakes and Northeast
- Freezing rain possible – New England and Appalachians
- Critical Fire Weather Areas/Red Flag Warnings: None
- Space Weather: No space weather storms observed or predicted

Earthquake Activity: None

Declaration Activity:

- Major Disaster Declaration approved – Nebraska
- Major Disaster Declaration approved – Illinois

Winter Storm – Southeast to Northeast

Situation:

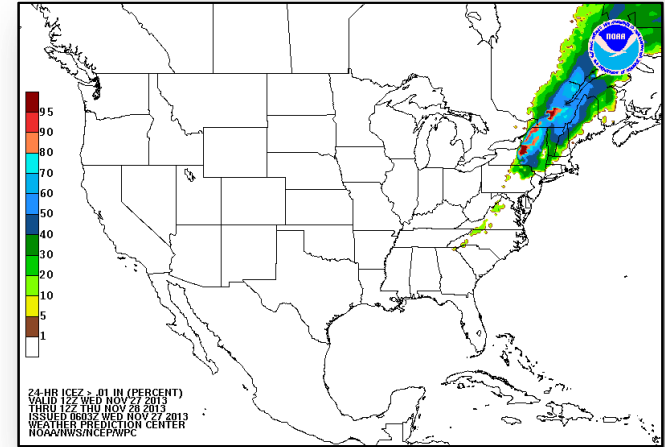
- Storm system that rapidly developed along central Gulf Coast now tracking into the Mid-Atlantic and Northeast

Impacts:

- Moderate to heavy rain – Southeast to Mid-Atlantic and Northeast
 - 2-4 inches of accumulation expected across entire region
 - Flood Watches in effect for the northwest portions of the Carolinas and portions of the Northeast
- ▲ Light to moderate snow continues from the Ohio valley northward through central New England

Response:

- VA EOC activated to Level III (Increased Readiness)
- MD EOC activated to Level III (On Alert)
- ▲ PA EOC activated to Level III (Enhanced Monitoring)
- TN EOC activated to Level IV (Localized Emergency)
- FEMA Regions I, II, III and IV will continue to monitor
- No shortfalls and no requests for FEMA assistance



Train Derailment – Ohio

November 26

- At 12:30 p.m. EST, a train derailment was reported at a rail yard in Willard, OH
- Involving two rail cars leaking Styrene Monomer (highly flammable liquid)

Current Situation:

- Clean-up operations continue; only one rail car continues to leak and the leak has been contained to CSX property
 - Approx. 12,000-16,000 gallons of styrene monomer from a 30,000 gallon capacity tanker (*Media sources*)
- Air monitoring underway by EPA and CSX
- IMAAC deactivated at 7:00 a.m. EST this morning

Impacts

- Approx. 400 homes evacuated to Willard High School (*Media sources*)
- No fatalities, injuries or significant impacts reported


State/Local Response:

- Command center established; ½ mile perimeter identified around the incident
- OH EOC remains at normal operations

FEMA Response:

- FEMA Region V remains at Watch/Steady State
- No unmet needs; no requests for FEMA assistance

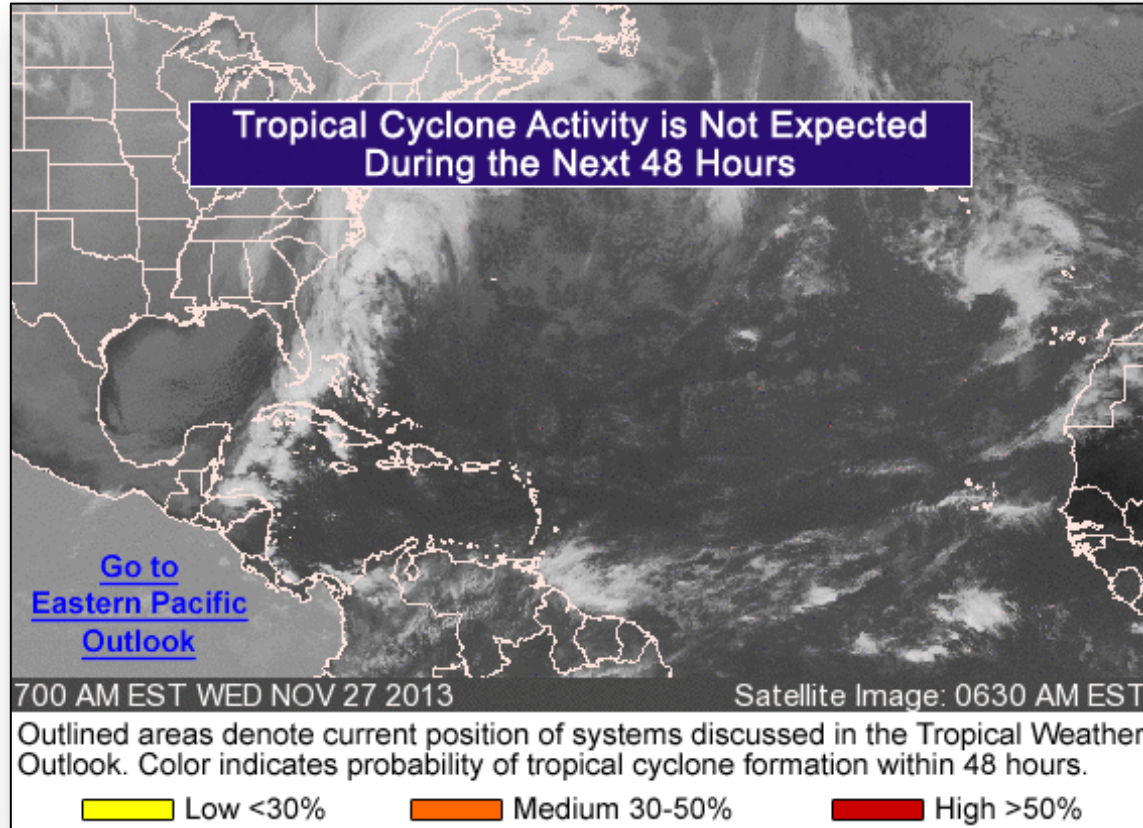


 = Impacted Counties

Atlantic – Tropical Outlook



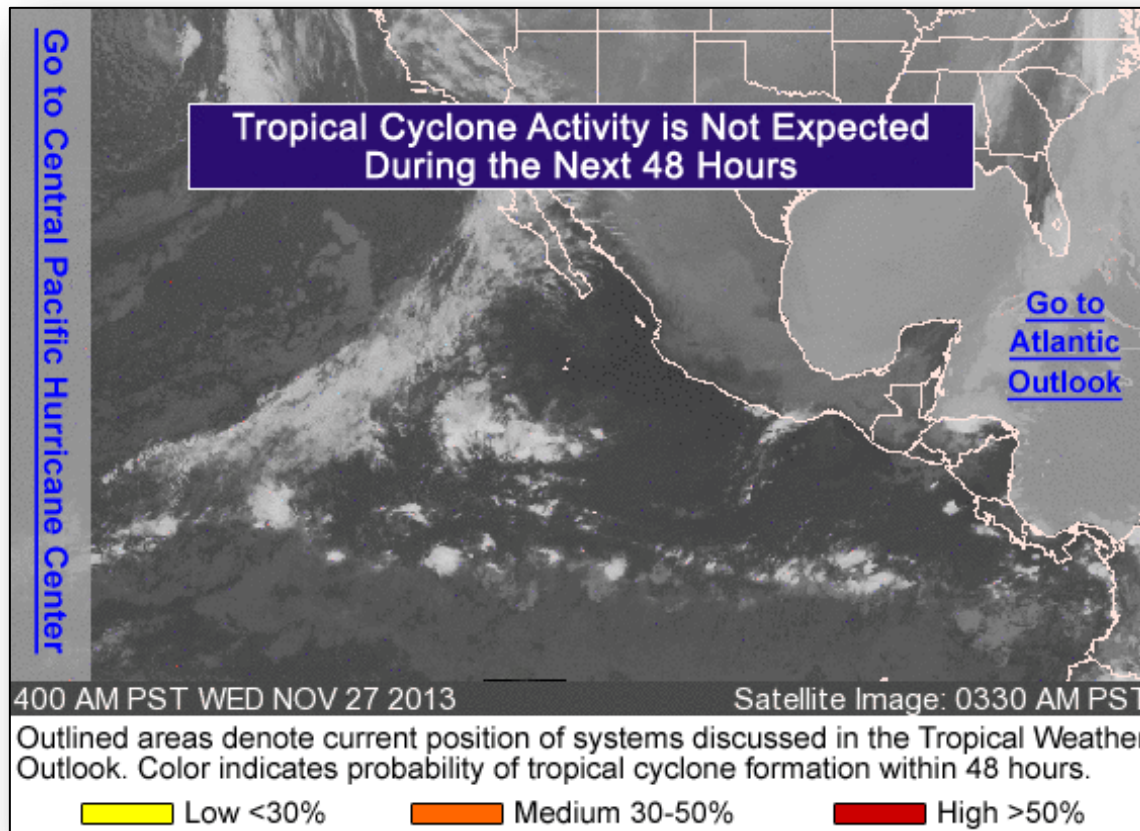
FEMA



Eastern Pacific – Tropical Outlook



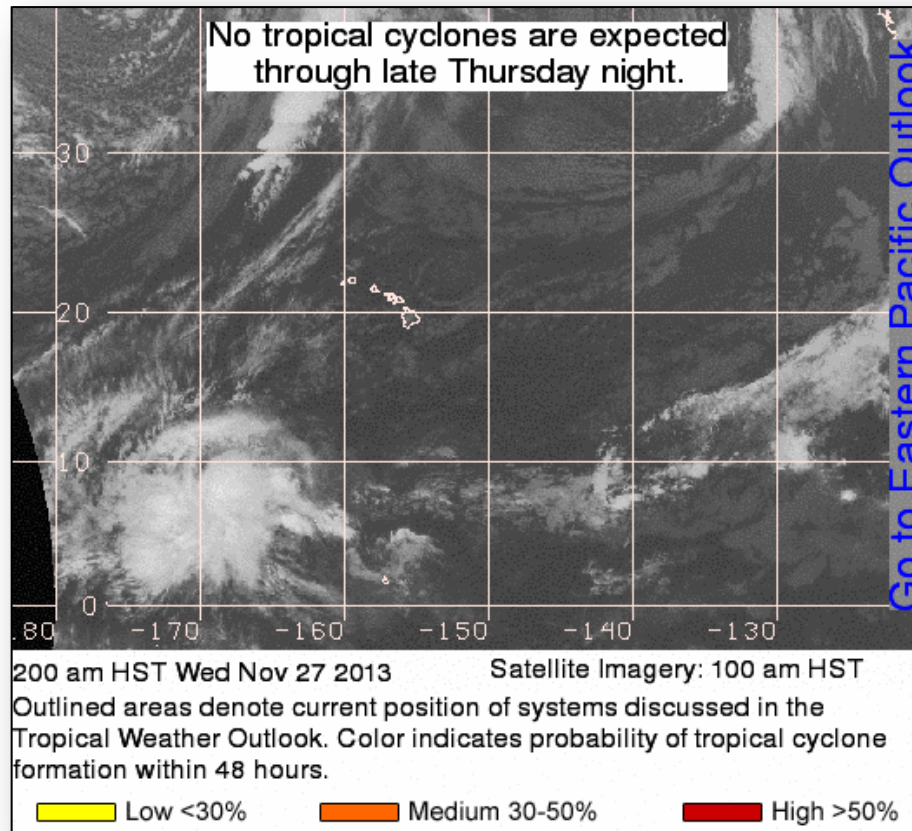
FEMA



Central Pacific – Tropical Outlook



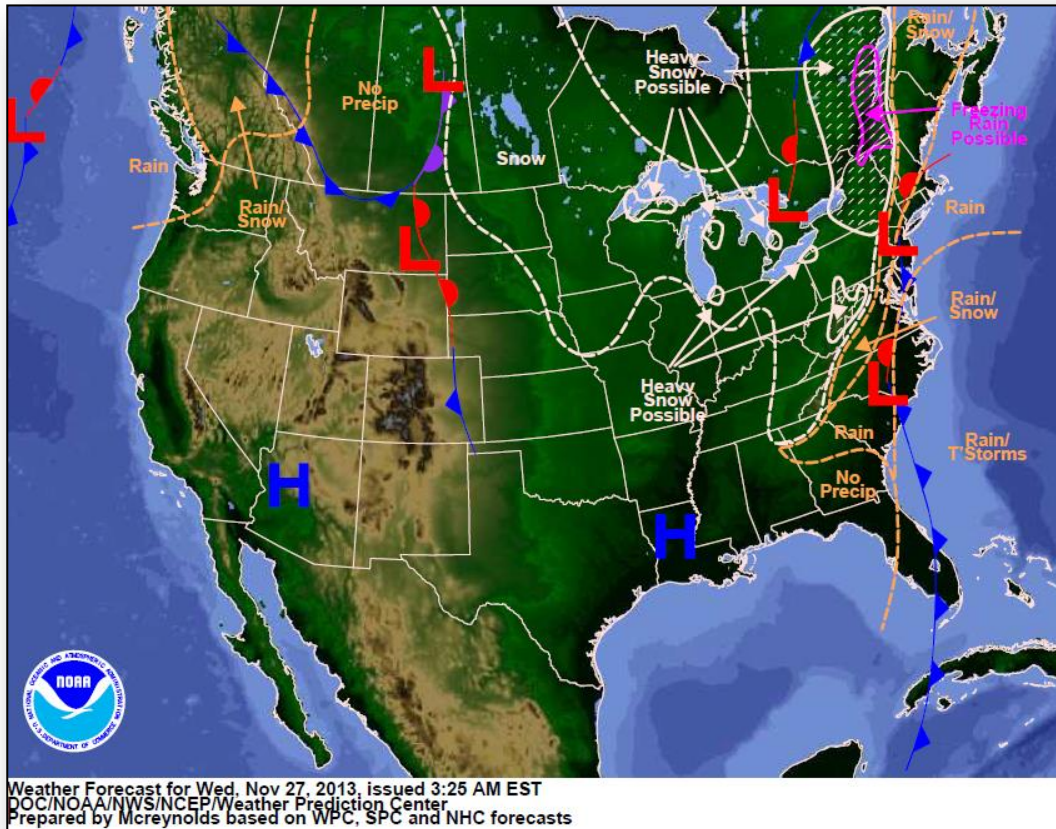
FEMA



National Weather Forecast



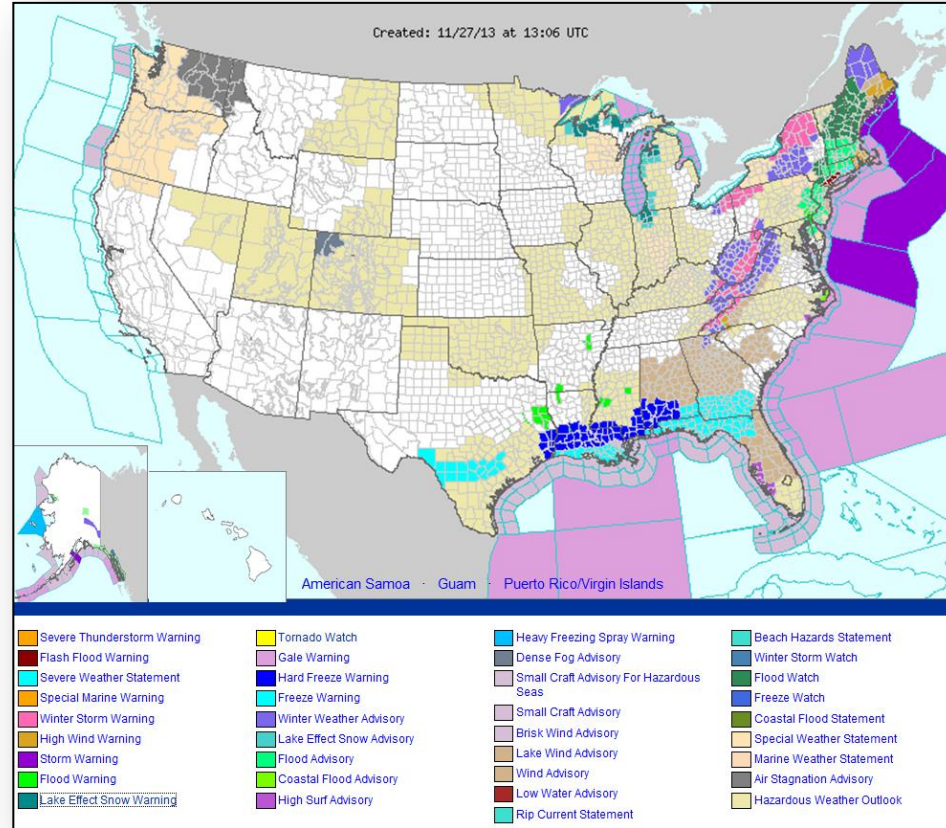
FEMA



Active Watches/Warnings



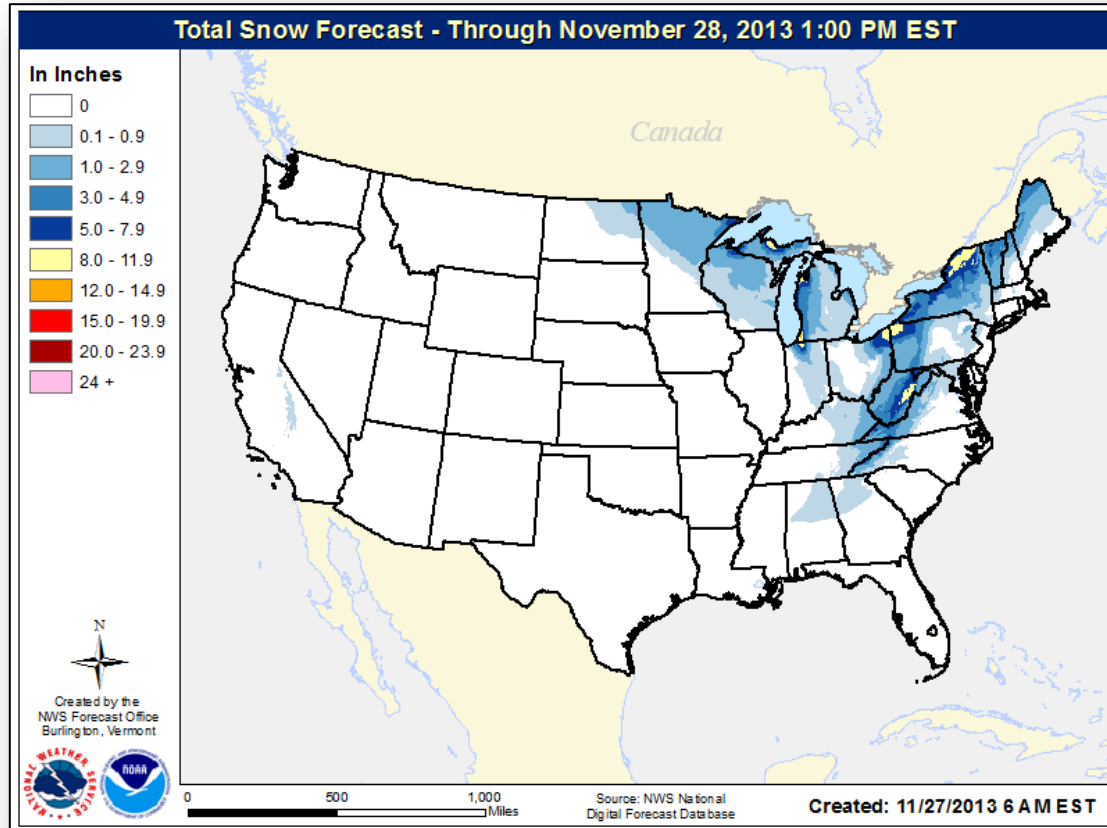
FEMA



Total Snow Forecast



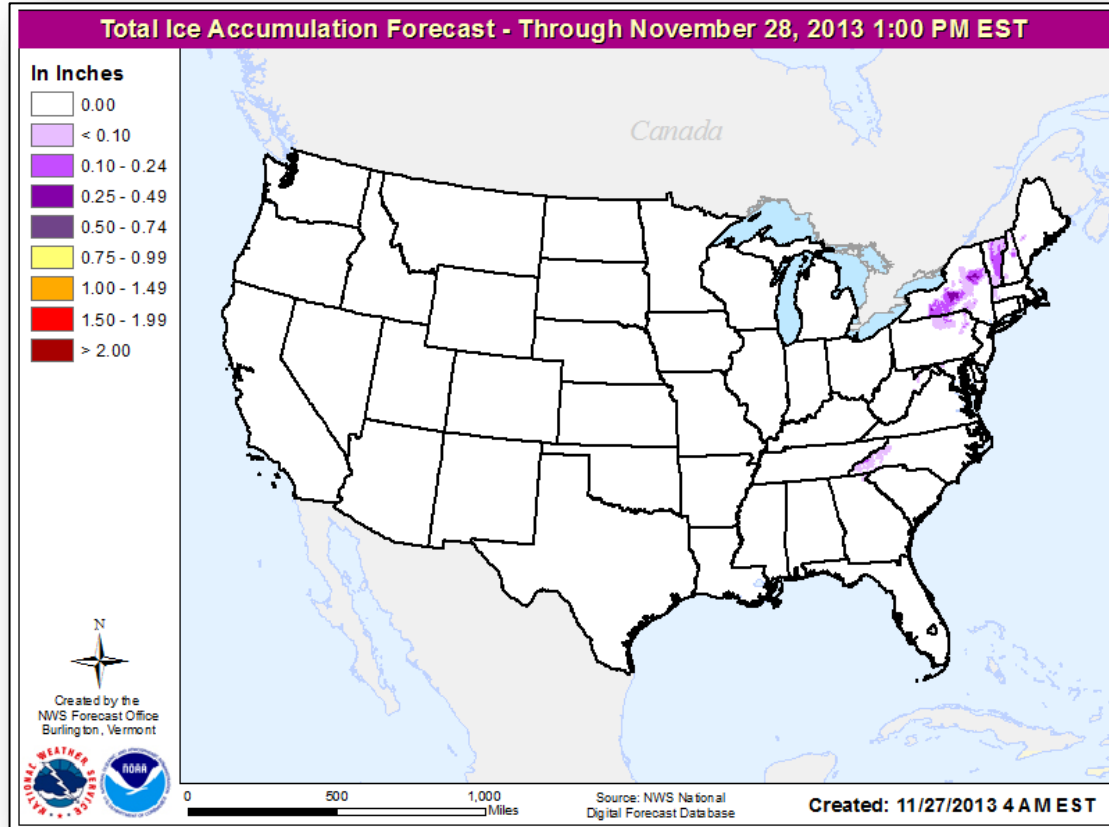
FEMA



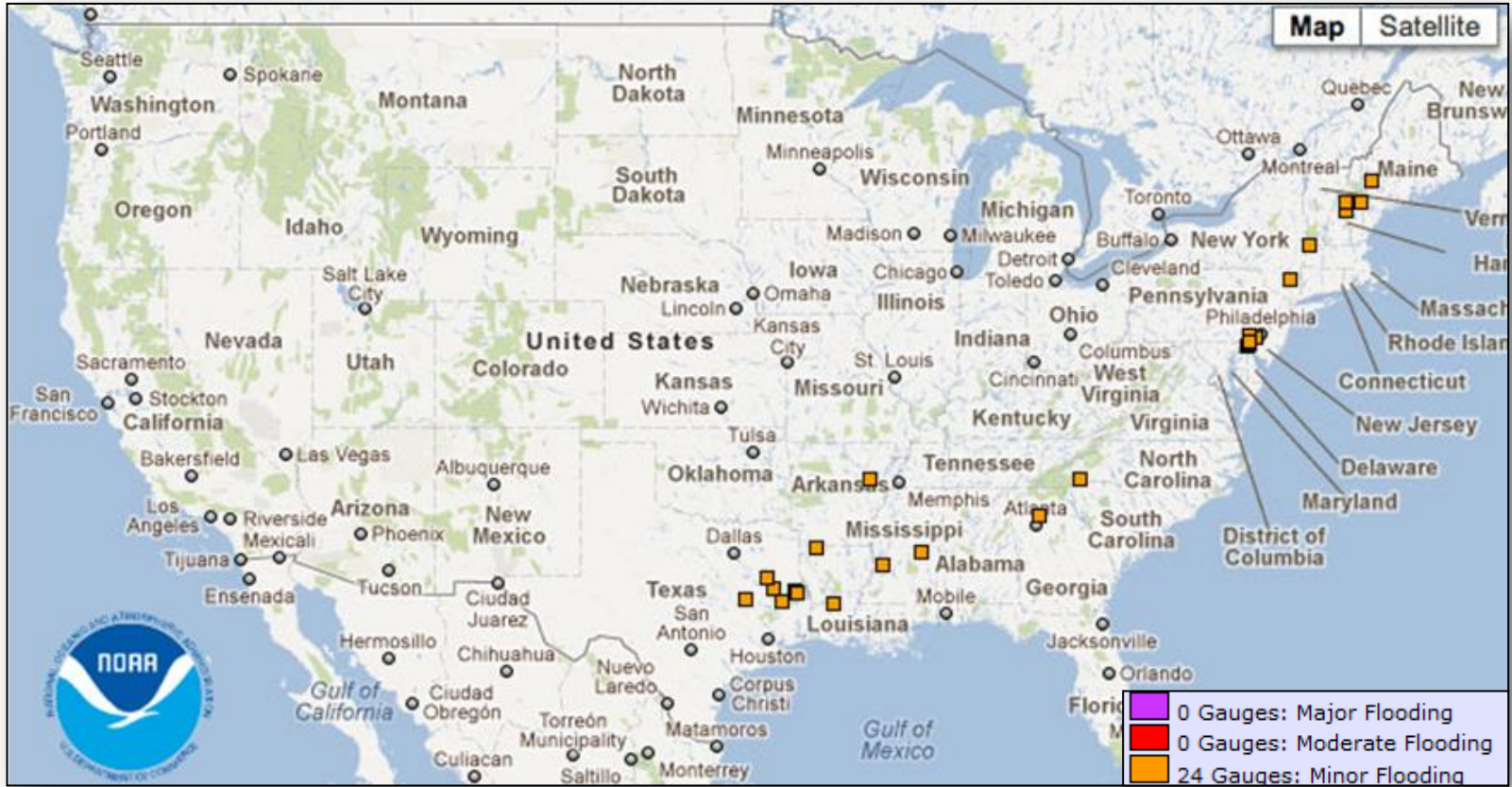
Total Ice Accumulation Forecast



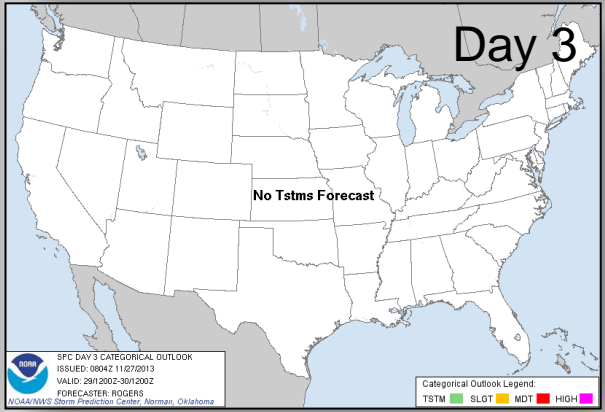
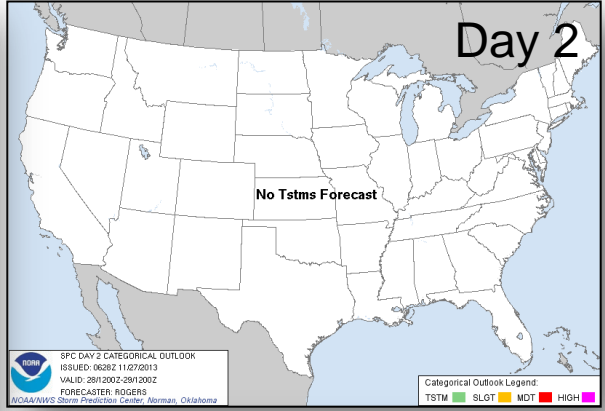
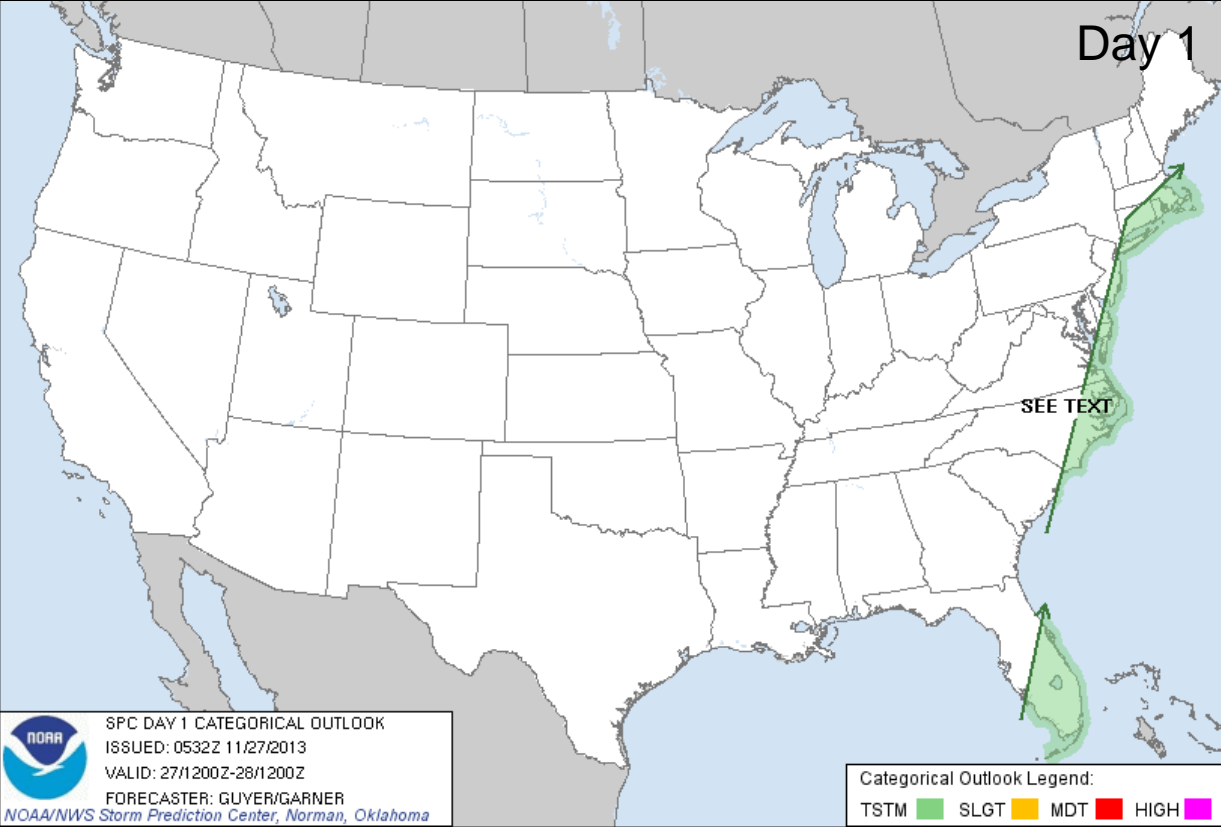
FEMA



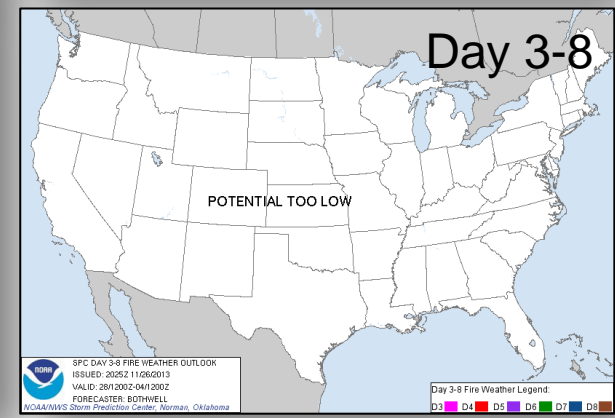
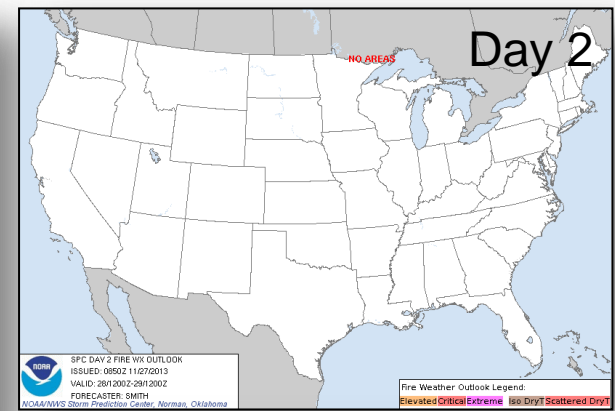
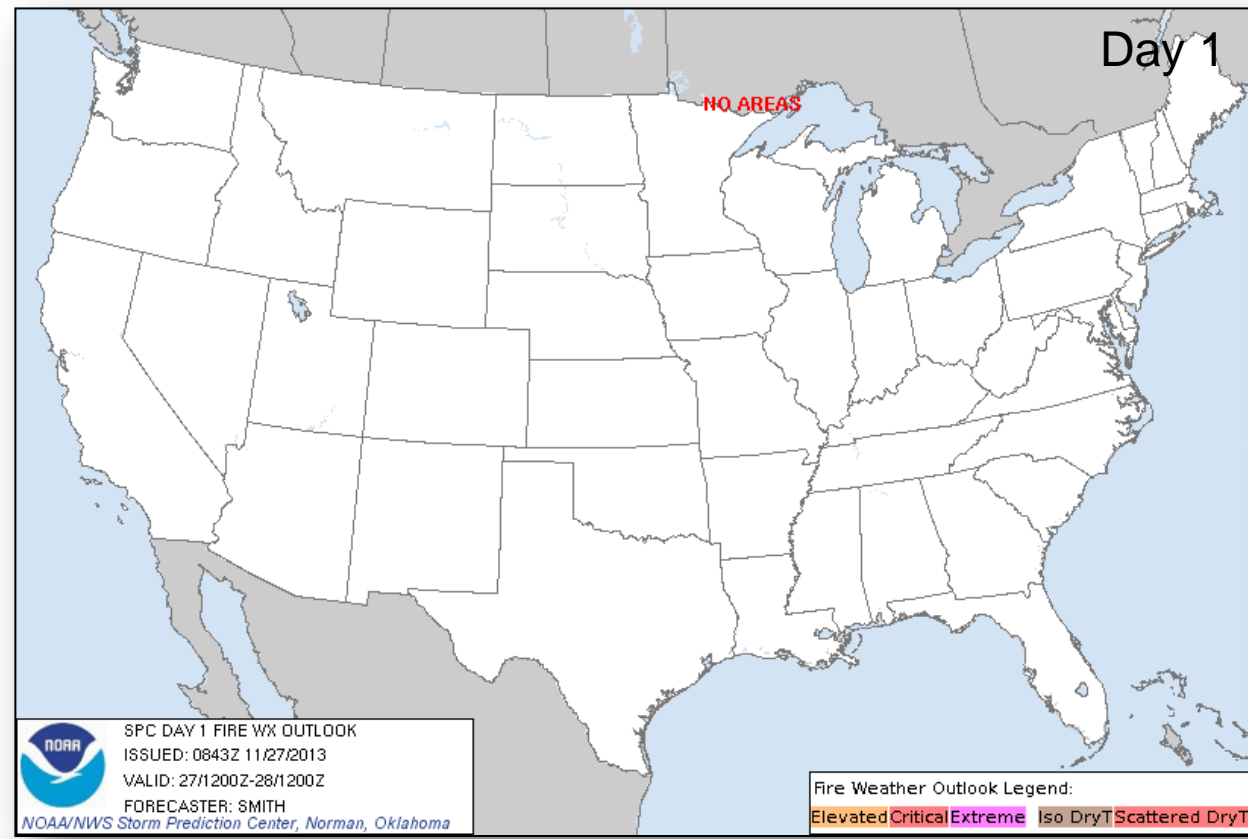
River Forecast – 7 Day



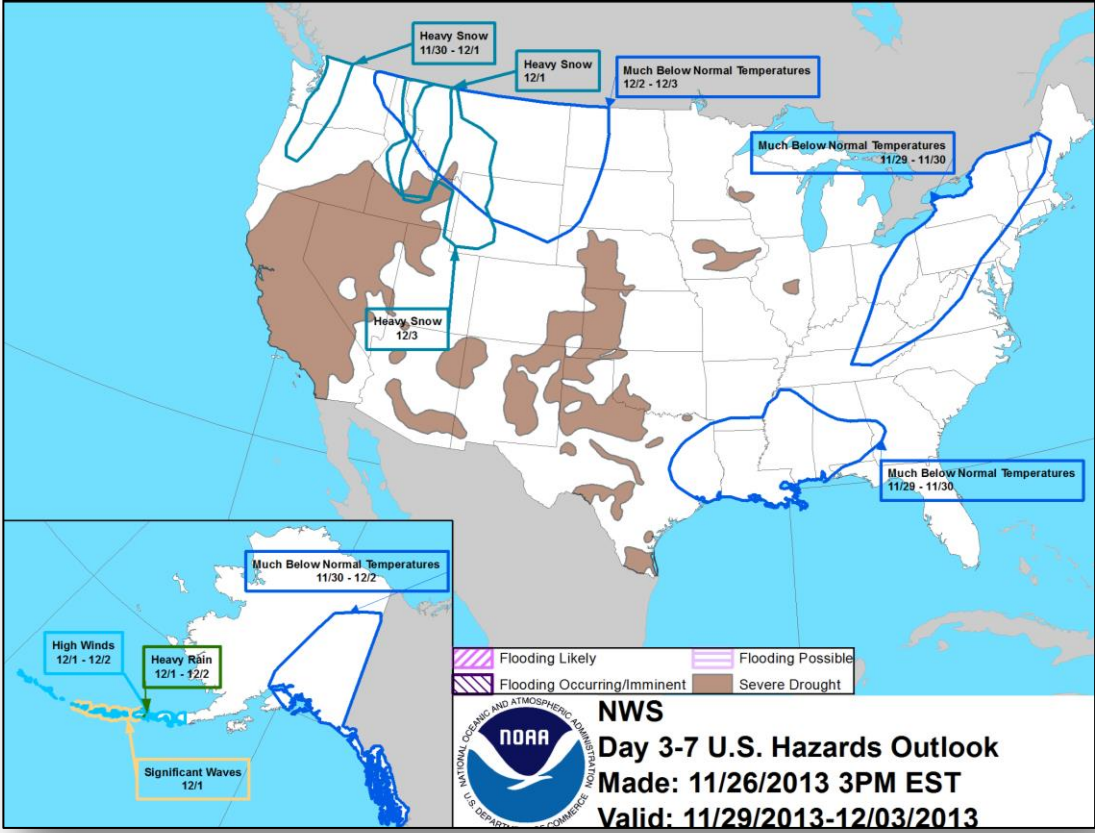
Convective Outlooks Days 1 – 3



Critical Fire Weather Areas Days 1 – 8

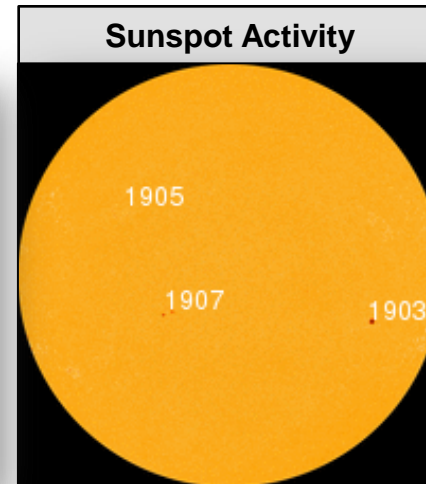
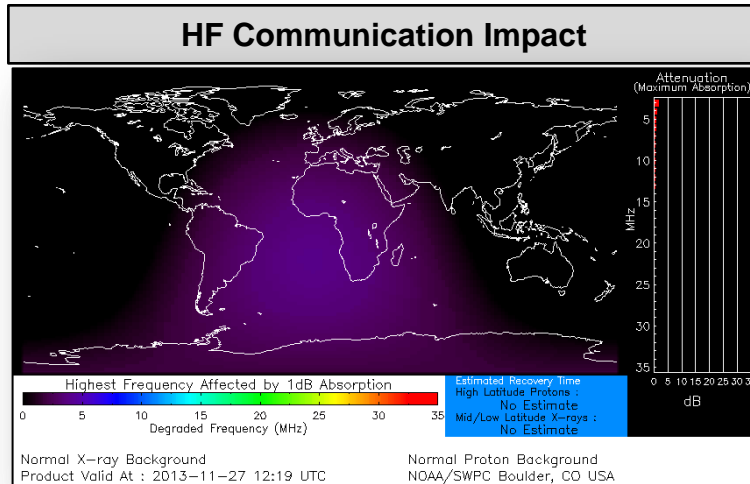


Hazard Outlook: Nov 29 – Dec 3



Space Weather

NOAA Scales Activity (Range: 1/minor to 5/extreme)	Past 24 Hours	Current	Next 24 Hours
Space Weather Activity:	None	None	None
• Geomagnetic Storms	None	None	None
• Solar Radiation Storms	None	None	None
• Radio Blackouts	None	None	None



Disaster Requests & Declarations



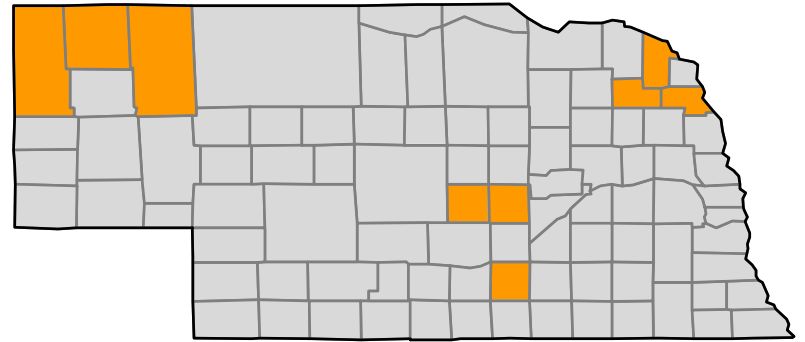
Declaration Requests in Process		Requests APPROVED (since last report)	Requests DENIED (since last report)
1	Date Requested	2	0
NE – DR Severe Storms, Tornadoes, Winter Storms, and Flooding	November 13, 2013	Declared November 26, 2013	
Rosebud Sioux Tribe – DR (Appeal) Severe Storms, Straight-line Winds, and Flooding	October 29, 2013		
IL – DR Severe Storms, Straight-line Winds, and Tornadoes	November 25, 2013	Declared November 26, 2013	


Major Disaster Declaration Approved - NE



FEMA-4156-DR-NE

- Major Disaster Declaration approved for State of Nebraska on November 26, 2013
- For severe storms, winter storms, tornadoes and flooding that occurred October 2-6, 2013
- Provides:
 - Public Assistance for 9 counties
 - Hazard Mitigation statewide
- FCO is Elizabeth Turner



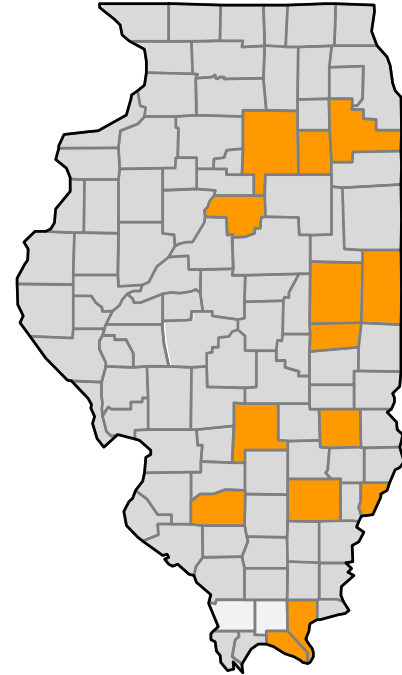
 Declared counties


Major Disaster Declaration Approved - IL



FEMA-4157-DR-IL

- Major Disaster Declaration approved for the State of Illinois on November 17, 2013
- For severe storms, straight-line winds, and tornadoes that occurred on November 17, 2013
- Provides:
 - Individual Assistance for 15 counties
 - Hazard Mitigation statewide
- FCO is Donald L. Keldsen



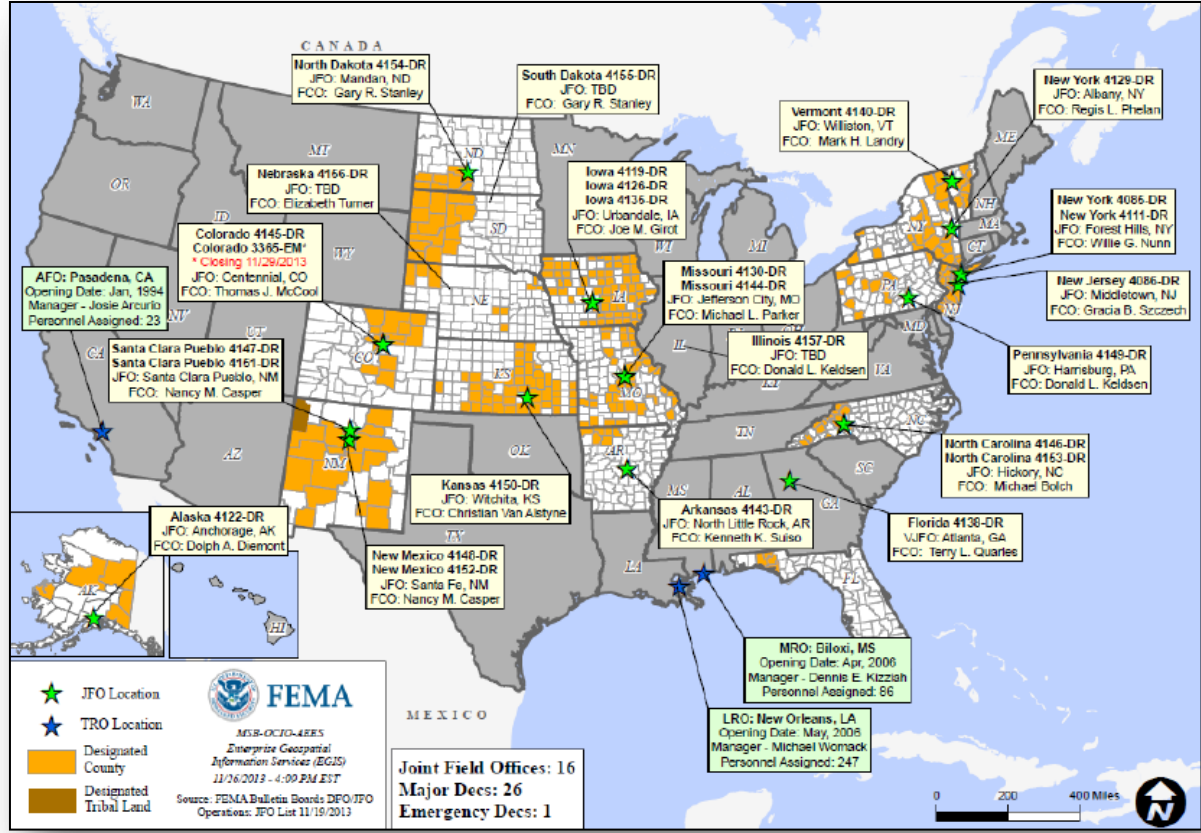
 = Declared counties

Joint Preliminary Damage Assessments



Region	State / Location	Event	IA/PA	Number of Counties		Start – End
				Requested	Complete	
V	IL	Severe Storms and Tornadoes November 17-18, 2013	IA	15	15	11/21-11/24
			PA	15	0	12/2-TBD
V	IN	Severe Storms and Tornadoes November 17-18, 2013	IA	1	0	11/25-11/27

Open Field Offices as of November 27, 2013



IMAT Status



National Teams					
Team	Status	Team	Status	Team	Status
Blue/White/Red	Available/Mission Capable	East	Assigned/Deployed (CO)	West	Available/Mission Capable
Regional Teams					
Team	Status	Team	Status	Team	Status
Region I	Available/Mission Capable	Region V	Not Mission Capable	Region VIII	Assigned/Deployed (SD)
Region II	Available/Mission Capable	Region VI-1	Available/Mission Capable	Region IX-1	Available/Mission Capable
Region III	Assigned/Deployed (PA)	Region VI-2	Assigned/Deployed (NM)	Region IX-2	Available/Mission Capable
Region IV-1	Available/Mission Capable	Region VII	Assigned/Deployed (KS)	Region X	Not Mission Capable
Region IV-2	Assigned/Deployed (NC)				

= Available/Mission Capable
 = Assigned/Deployed
 = Available/Partially Mission Capable
 = Not Mission Capable

OFDC Cadre Member Status



Federal Coordinating Officer

Total	Deployed	Detailed	Not Available	Available	Cadre Status
40	26	1	2	11	
Total Available	Type 1	Type 2	Type 3	Type 4	
11*	1	5	2	3	

* All Type 1 FCOs are available unless deployed to a Level 1 event

Federal Disaster Recovery Coordinator

Total	Deployed	Assigned	Available	Status
9	6	4	2	

As of: 11/22/2013

MCOV Fleet / Deployment Status

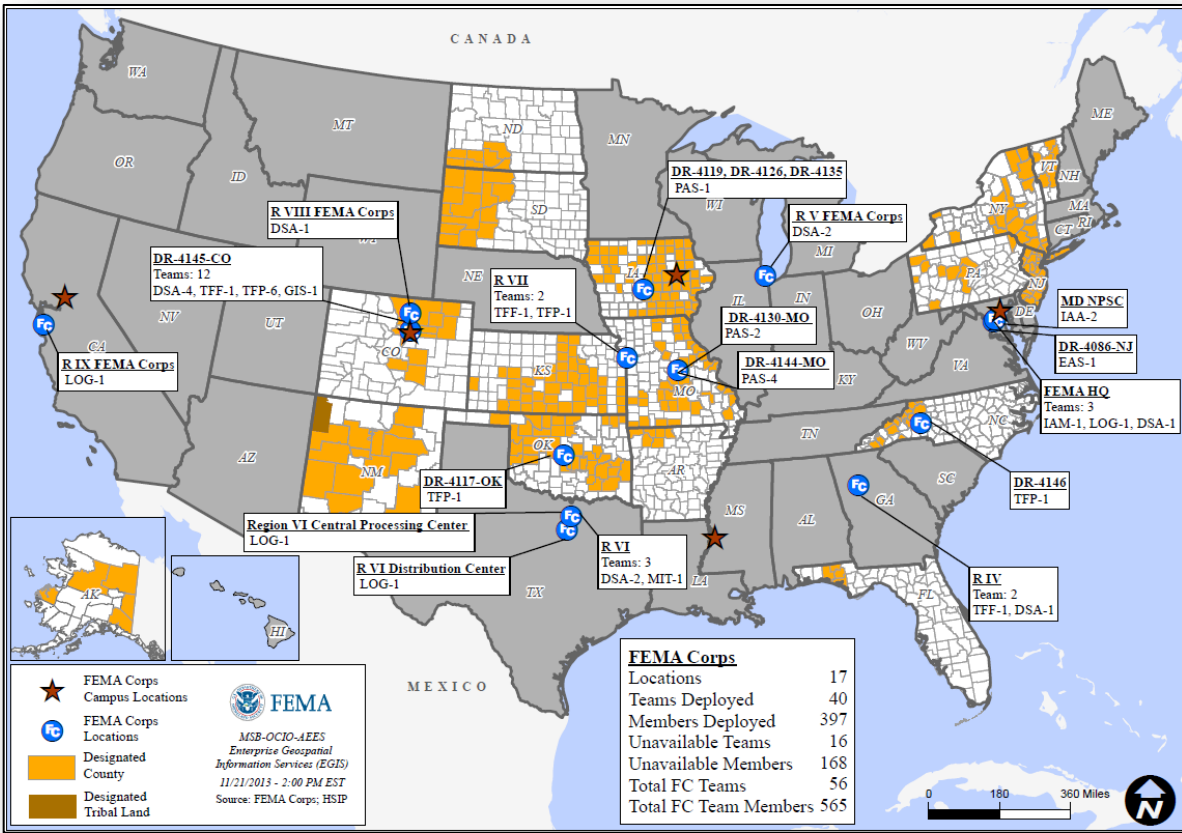


MCOV FLEET STATUS						MCOV DISASTER SUPPORT DEPLOYMENTS					
Location	Units Assigned	Available FMC	Deployed Committed	PMC	Unavailable	DR-State	OPCON	En Route	Unit Prep	Open Request	Notes:
MERS Maynard	3	3	0			DR-4145-CO	4				
MERS Frederick	8	8	0								
MERS Thomasville	14	13	1								
DC Ft Worth	20	16	3		1						
MERS Denver	2	2	0								
MERS Bothell	4	4	0								
Sacramento	4	4	0								
TOTAL	55	50	4	0	1	TOTAL	4	0	0	0	
Units in route for turn-in included in above totals.		1									

Fully Mission Capable	54
Partially Mission Capable	0
Non-Mission Capable	1
Total Not Deployed	51

Data as of: 11/26/13 @ 1500

FEMA Corps Team Locations, as of Nov 25



Urban Search & Rescue



INCIDENT SUPPORT TEAMS (Red-White-Blue) – Monthly On Call Rotation											
JAN	FEB	MAR	APR	MAY	JUN	JUL	AUG	SEP	OCT	NOV	DEC
WEST				CENTRAL				EAST			
Team	Status	Team	Status	Team	Status	Team	Status	Team	Status	Team	Status
CA-TF1	Available	AZ-TF1	Available	FL-TF1	Available	CA-TF2	Available	CO-TF1	Available	FL-TF2	Available
CA-TF3	Available	IN-TF1	Available	MA-TF1	Available	CA-TF4	Available	MO-TF1	Available	MD-TF1	Available
CA-TF5	Available	NE-TF1	Available	NY-TF1	Available	CA-TF6	Available	NM-TF1	Conditional	PA-TF1	Available
CA-TF7	Available	NV-TF1	Conditional	VA-TF1	Available	CA-TF8	Available	TN-TF1	Available	VA-TF2	Available
WA-TF1	Available	TX-TF1	Available	OH-TF1	Available			UT-TF1	Available		

= Available/Mission Capable
 = Available/Partially Mission Capable

= Assigned/Deployed
 = Out-of-Service

RRCC / Regional Watch Center Status



Region	RRCC	Regional Watch Center
I	Not Activated	Maynard MOC (24/7)
II	Not Activated	24/7
III	Not Activated	24/7
IV	Not Activated	24/7
V	Level III	24/7
VI	Not Activated	Denton MOC (24/7)
VII	Not Activated	24/7
VIII	Not Activated	Denver MOC (24/7)
IX	Not Activated	24/7
X	Not Activated	Bothell MOC (24/7)

 = Not Mission Capable

 = Available/Partially Mission Capable

 = Available/Mission Capable

National Team Status



Team/Status	Current Location	Remarks
National Watch Center	Washington, DC	Watch/Steady State
NRCC	Washington, DC	Not Activated
HLT	Miami, FL	Activated
DEST	Washington, DC	Not Activated
Mission Capable	Partially Mission Capable	Not Mission Capable



FEMA

FEMA's mission is to support our citizens and first responders to ensure that as a nation we work together to build, sustain, and improve our capability to prepare for, protect against, respond to, recover from, and mitigate all hazards.