



# **FEMA**

## **Daily Operations Briefing**

**Monday, November 25, 2013**

**8:30 a.m. EST**

# Significant Activity: Nov 22 – 25



**Significant Events:** Winter Storm – Southern Plains

**Tropical Activity:**

- Atlantic – Tropical cyclone activity not expected next 48 hours
- Eastern Pacific – Tropical cyclone activity not expected next 48 hours
- Central Pacific – No tropical cyclones expected through Tuesday night
- Western Pacific – No activity threatening U.S. territories

**Significant Weather:**

- Heavy rainfall – Deep South/East Coast
- Freezing rain – Lower Mississippi Valley/Southern Appalachians
- Snow – Southern Plains/Northern Rockies/Great Lakes to Northeast
- Critical Fire Weather Areas/Red Flag Warnings: None
- Space Weather: No space weather storms observed or predicted

**Earthquake Activity:** M7.0 – South Atlantic Ocean

**Declaration Activity:** Amendment No. 1 to FEMA-4149-DR-PA

# Winter Storm – Southern Plains

## **November 24-25:**

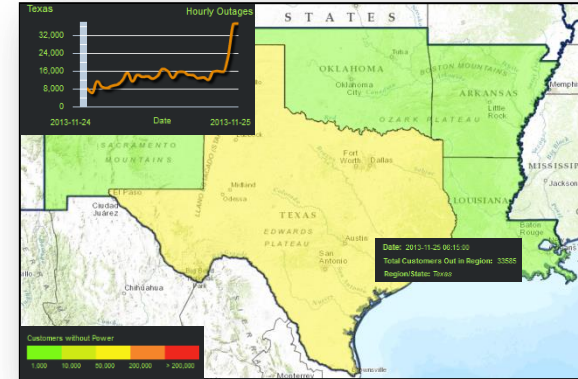
- Winter storm moved across the Southern Plains bringing freezing rain, sleet and snow to the region
- Conditions are forecast to improve across the region today

## **Impacts:**

- No significant storm-related impacts reported by any State
- 32,035 customers without power in TX; sporadic outages elsewhere (*DOE*)
- All interstates and US highways are open, but difficult driving conditions are being reported on many roadways
- Unconfirmed, news media reports indicate 8 to 13 storm-related fatalities, primarily involving vehicle accidents

## **Response:**

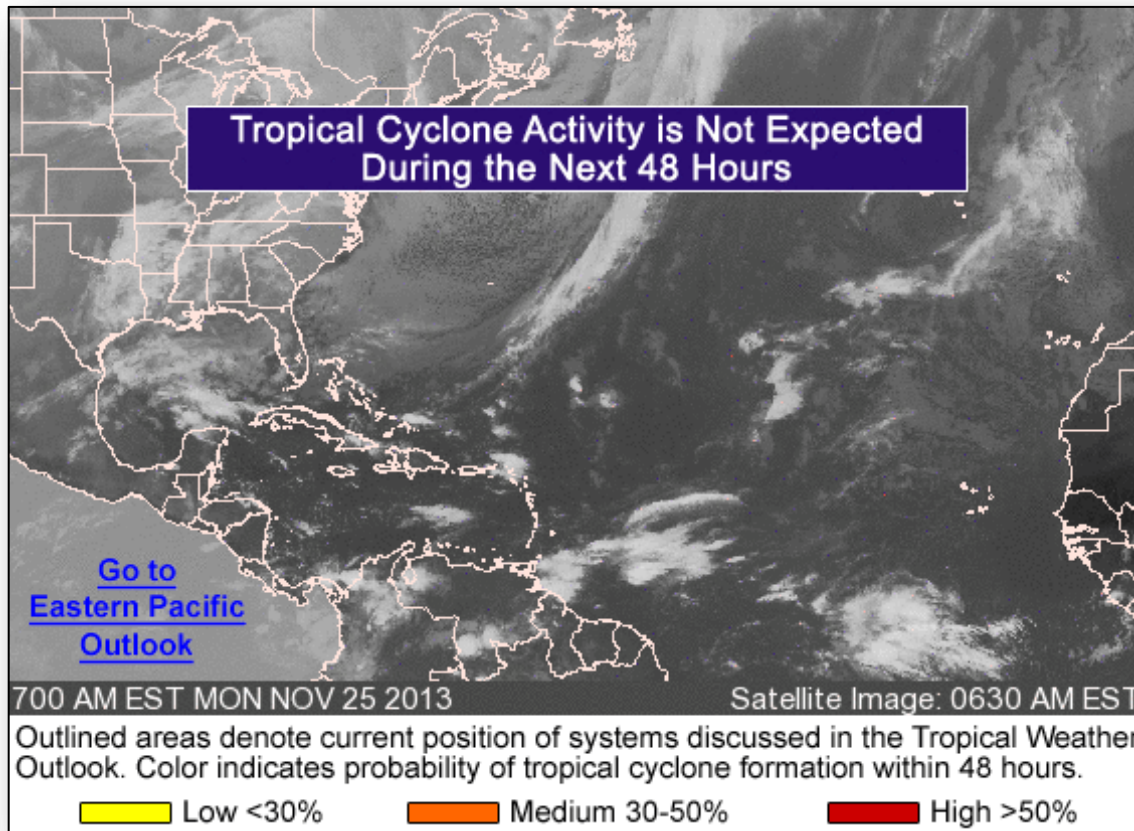
- All SEOCs are at Normal Ops; NM EOC returned to Normal Ops on Nov 24
- FEMA Region VI remains at Watch/Steady State
- All shelters in NM closed; one shelter remains open in TX w/ no occupants (*ARC*)
- No shortfalls identified; No requests for FEMA assistance



# Atlantic – Tropical Outlook



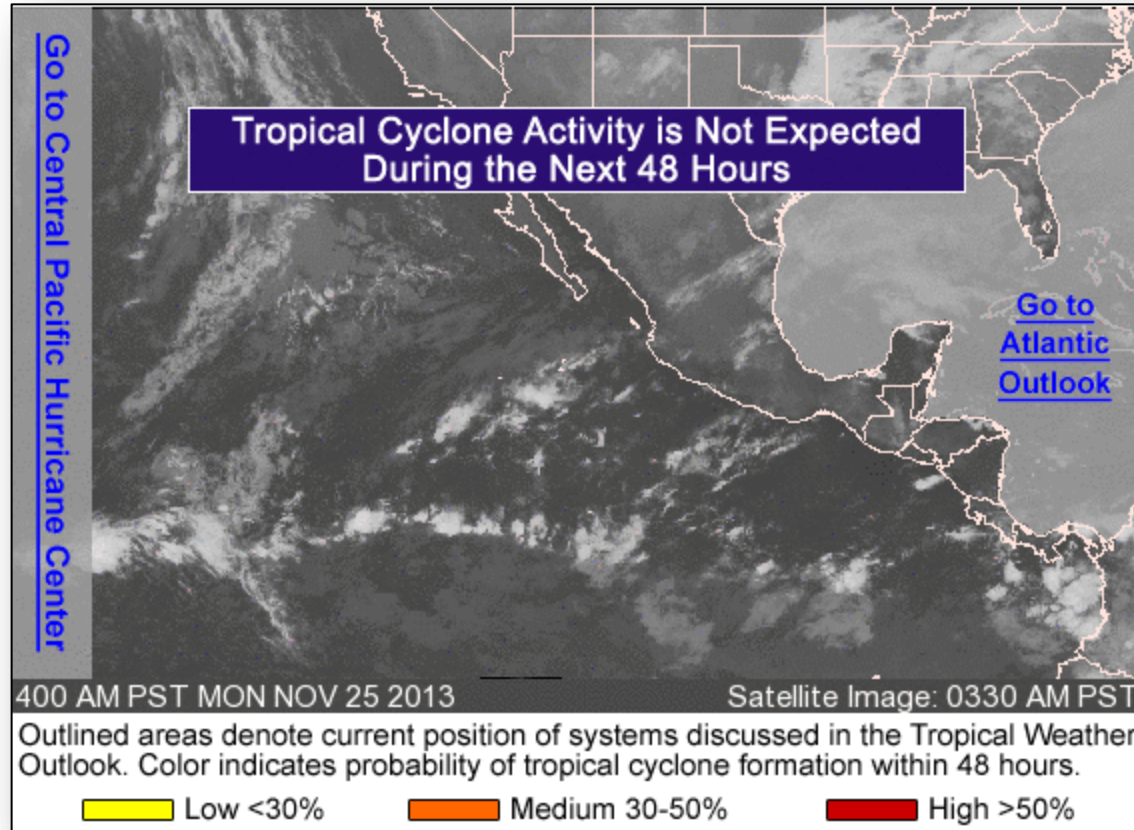
FEMA



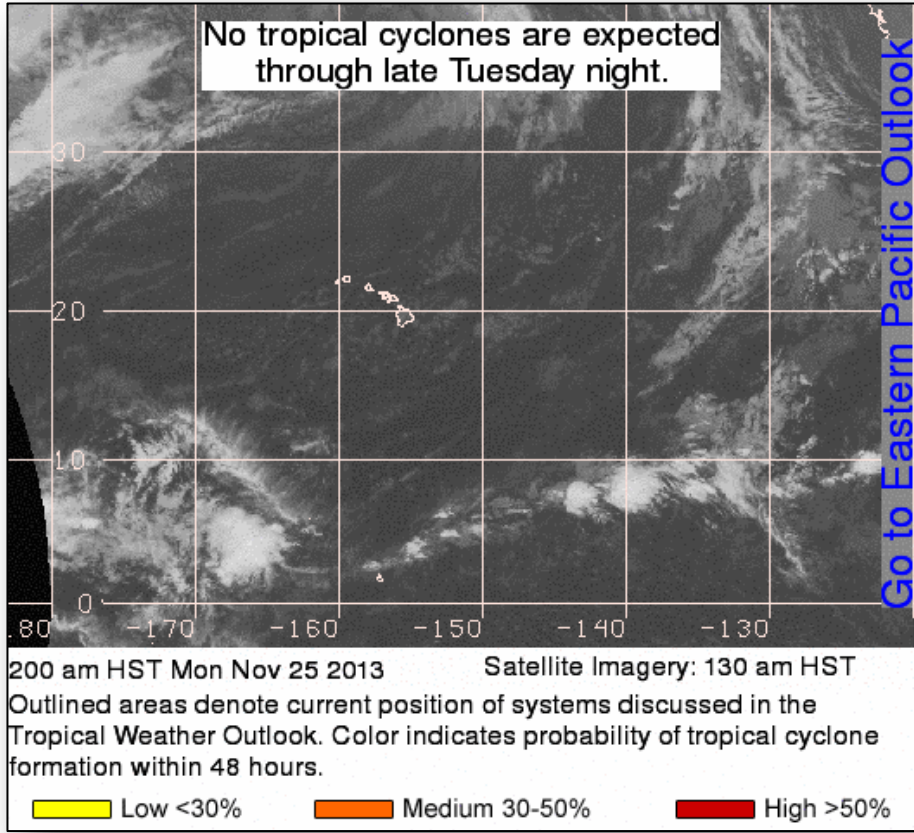
# Eastern Pacific – Tropical Outlook



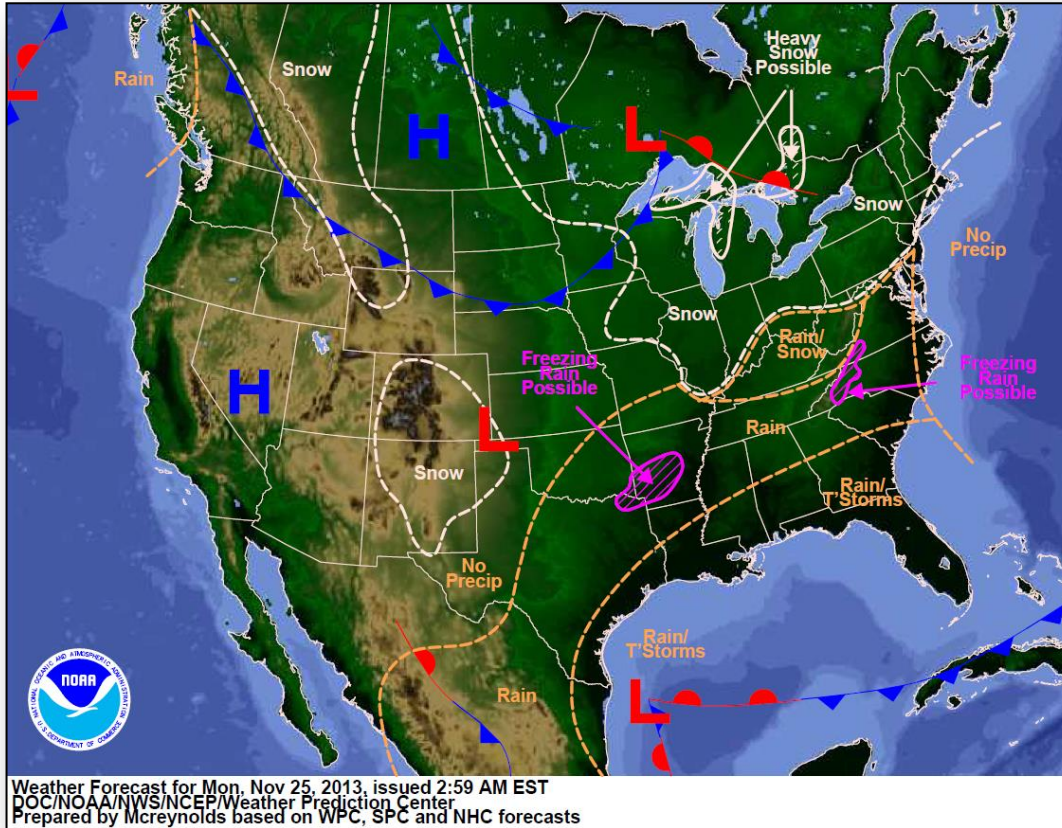
FEMA



# Central Pacific – Tropical Outlook



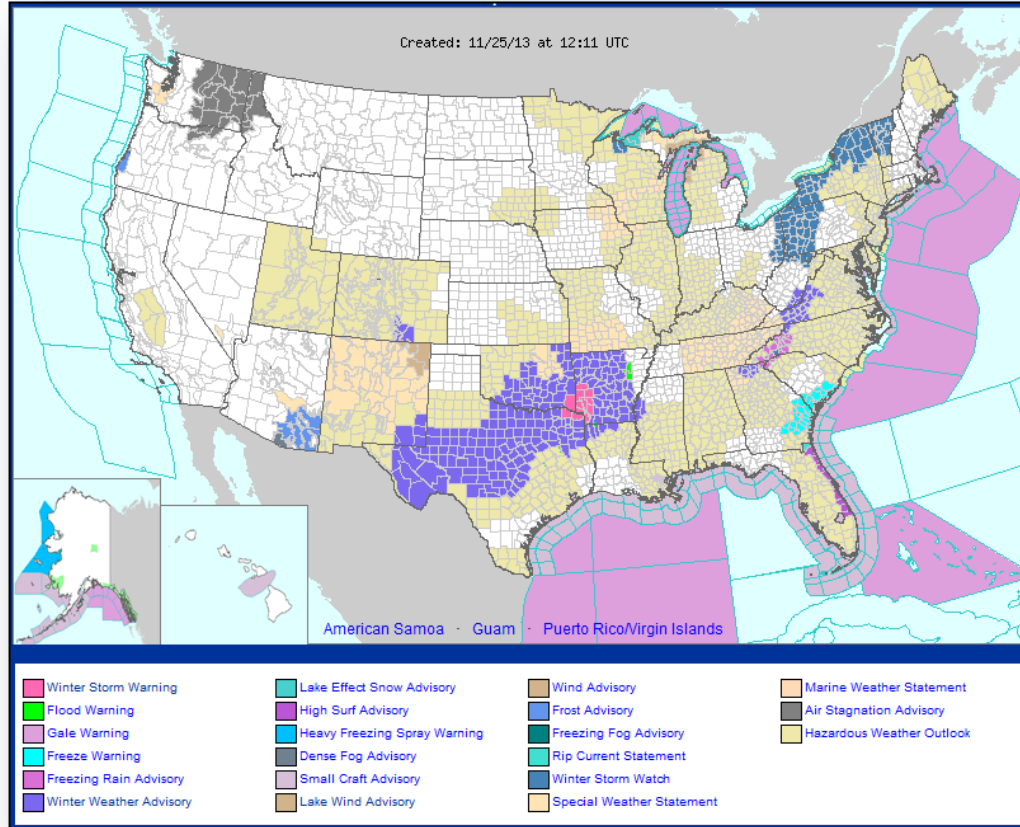
# National Weather Forecast



# Active Watches/Warnings



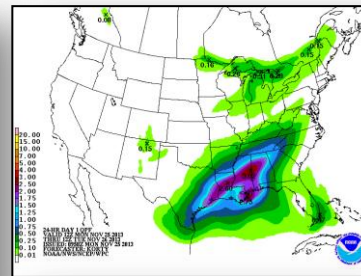
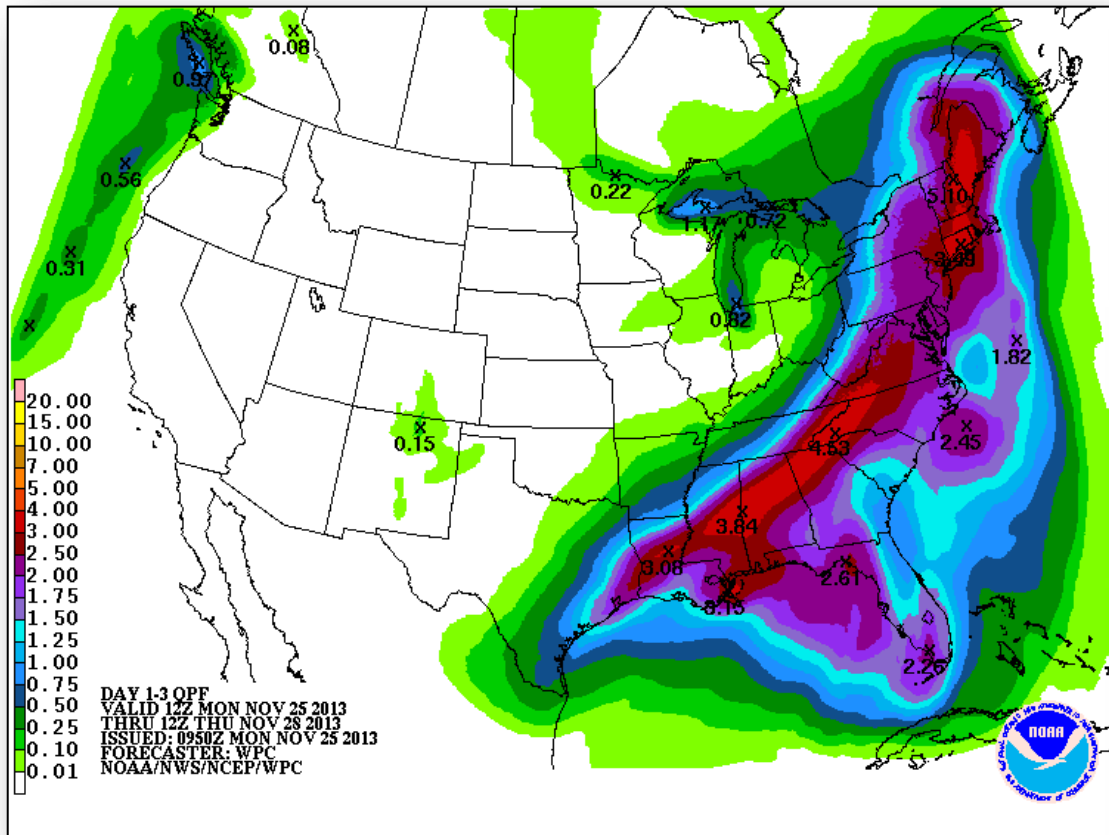
FEMA



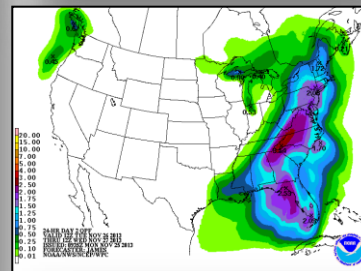




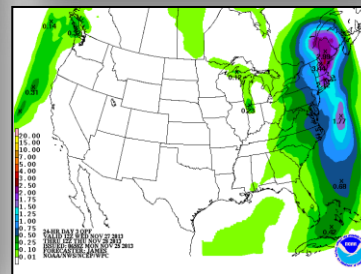
# Precipitation Forecast – 3 Day



Day 1

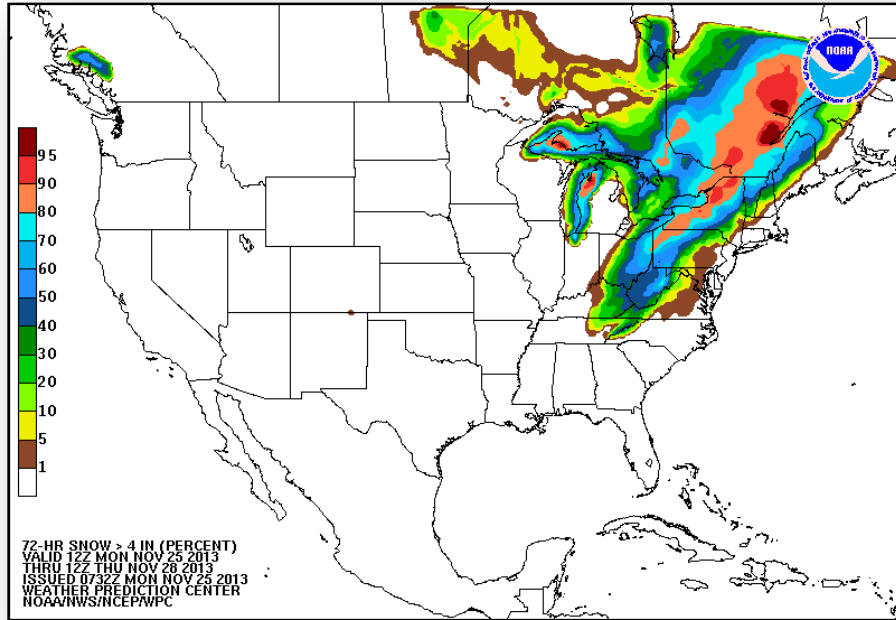


Day 2

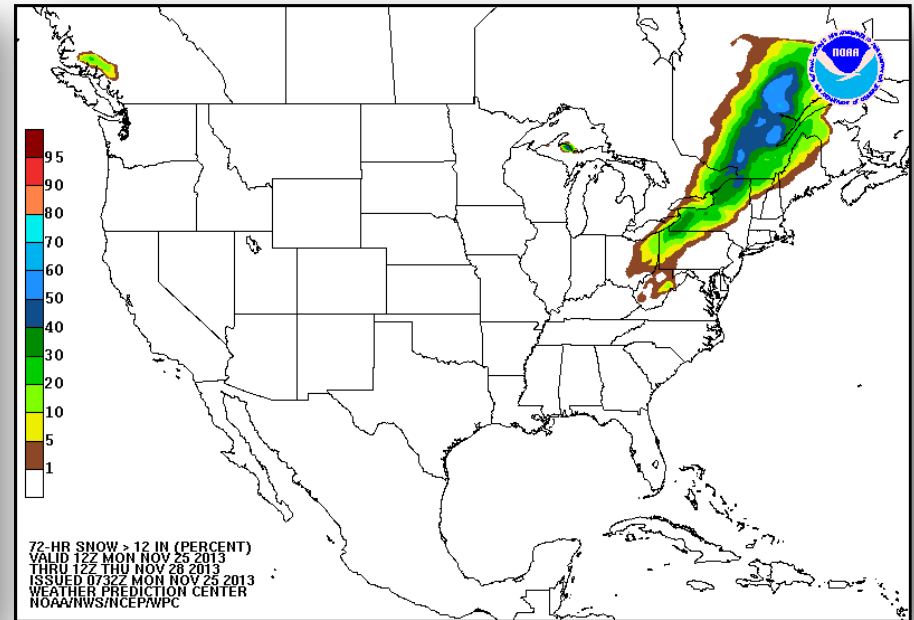


Day 3

# Probability for Snow Accumulations – 72 Hour

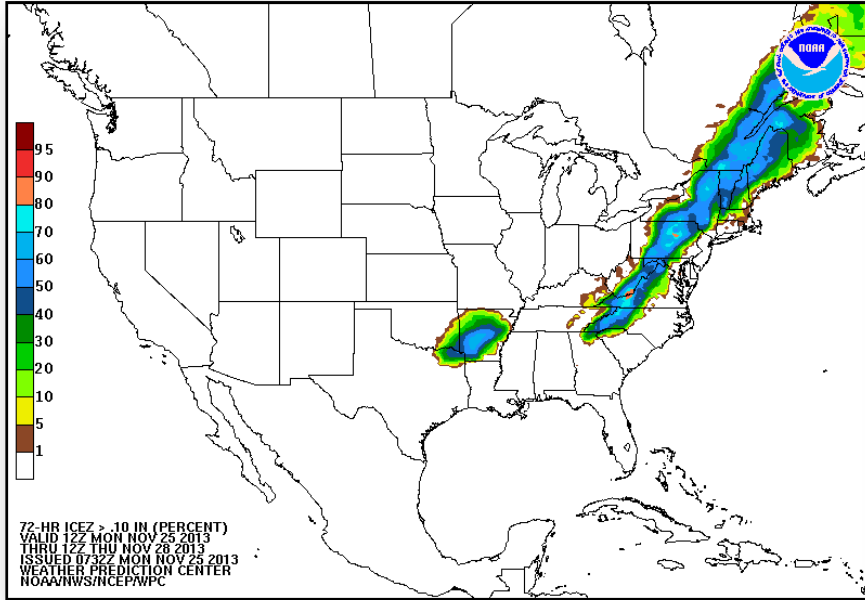


Probability of snow accumulations >4

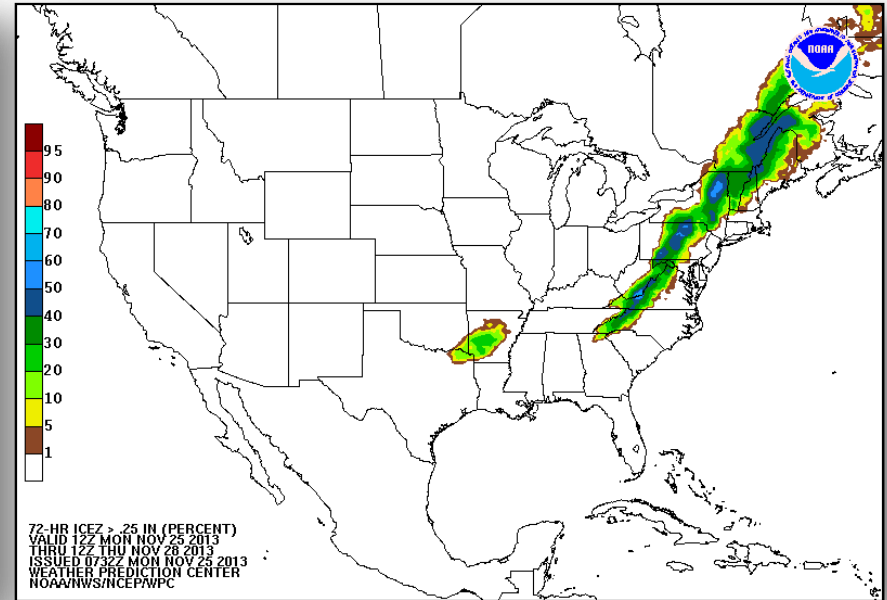


Probability of snow accumulations >12

# Probability for Freezing Rain Accumulations

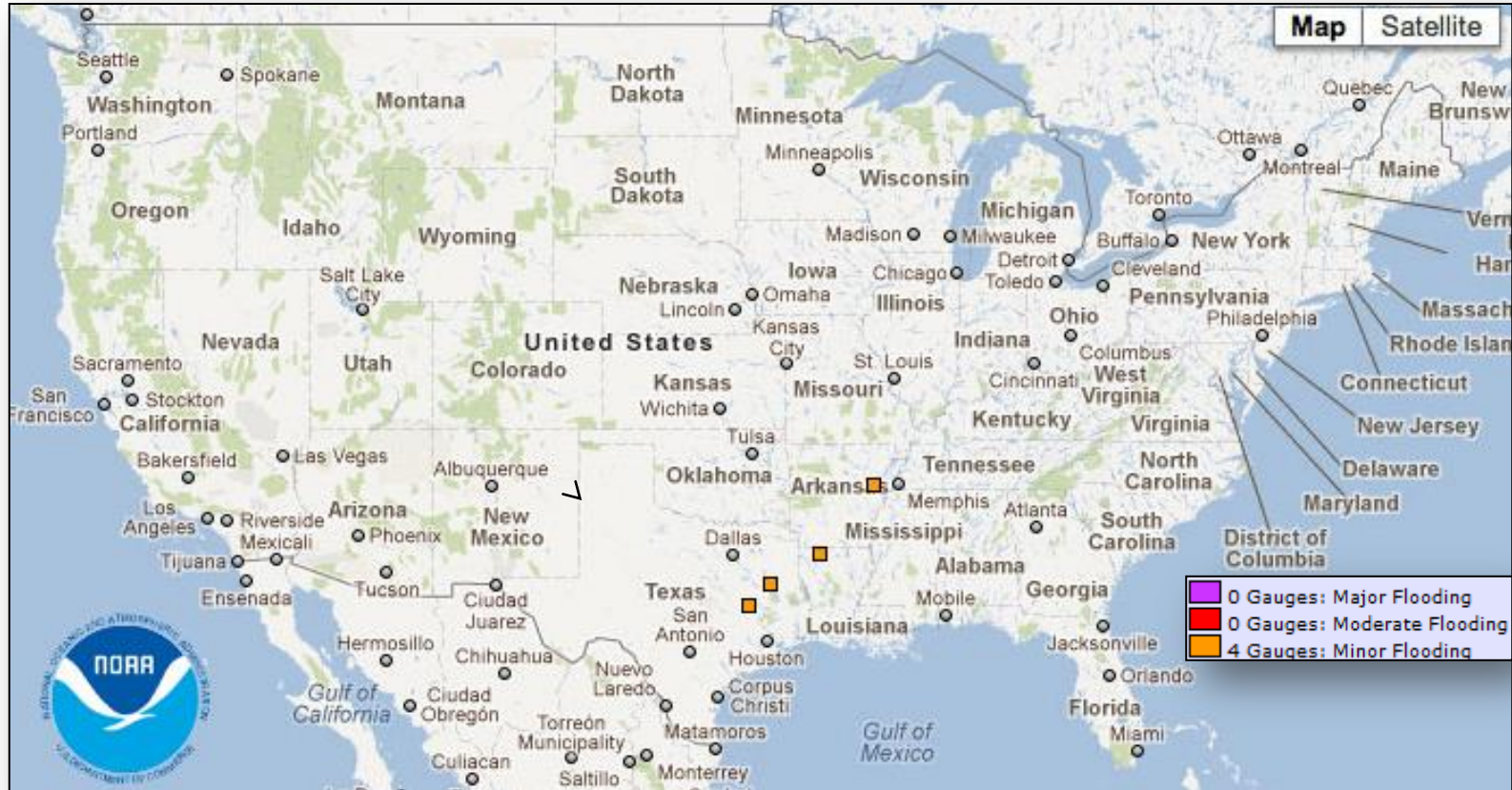


72-hour probability of Freezing Rain accumulating > .10

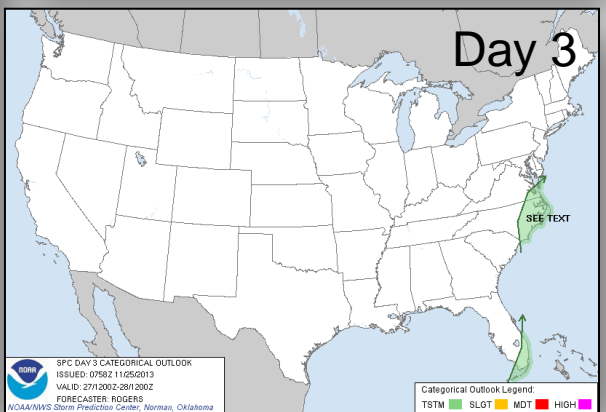
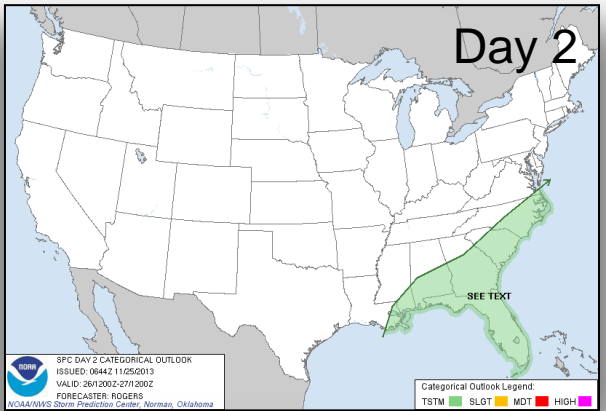
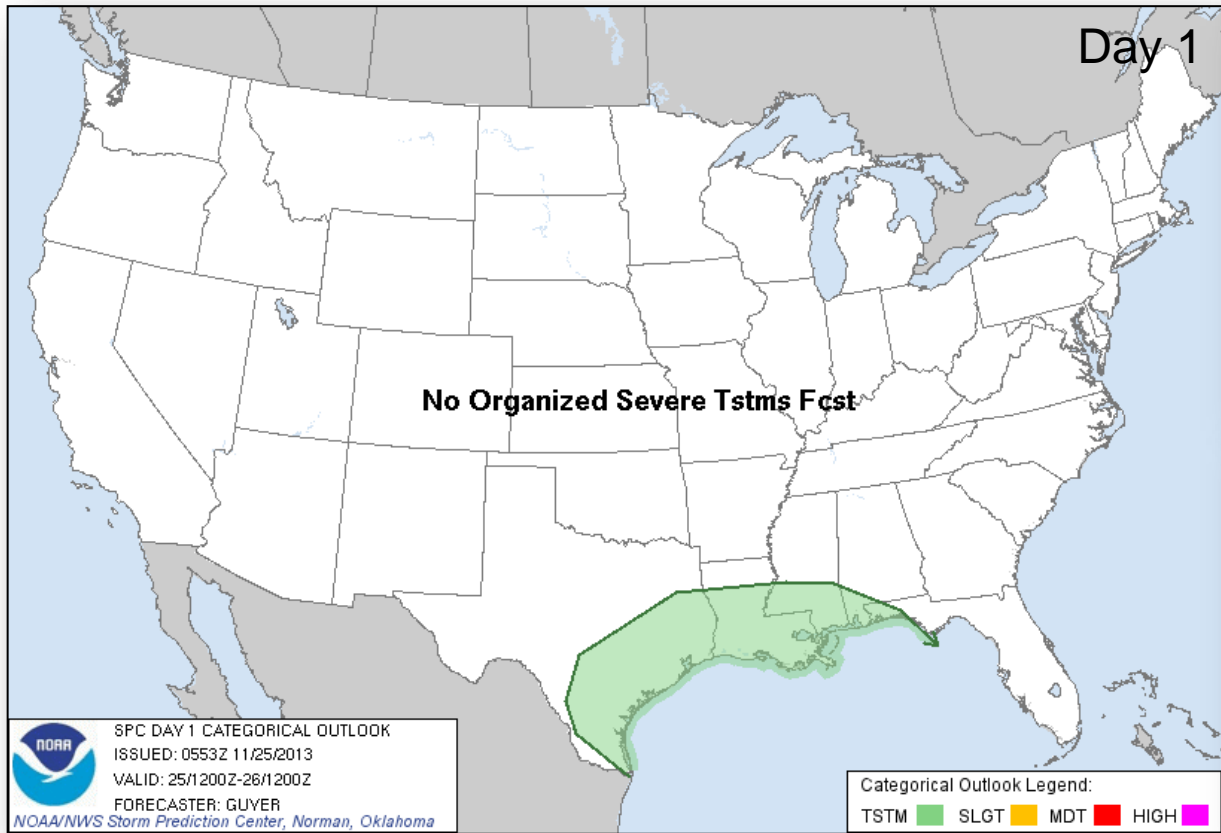


72- hour probability of freezing rain accumulating > .25

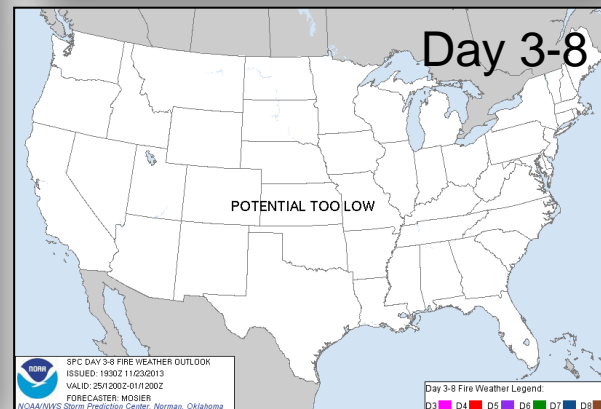
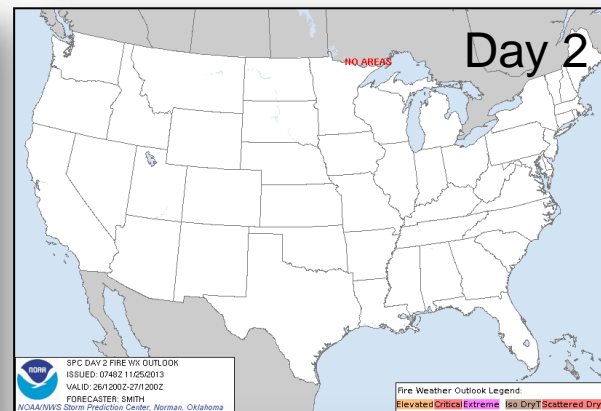
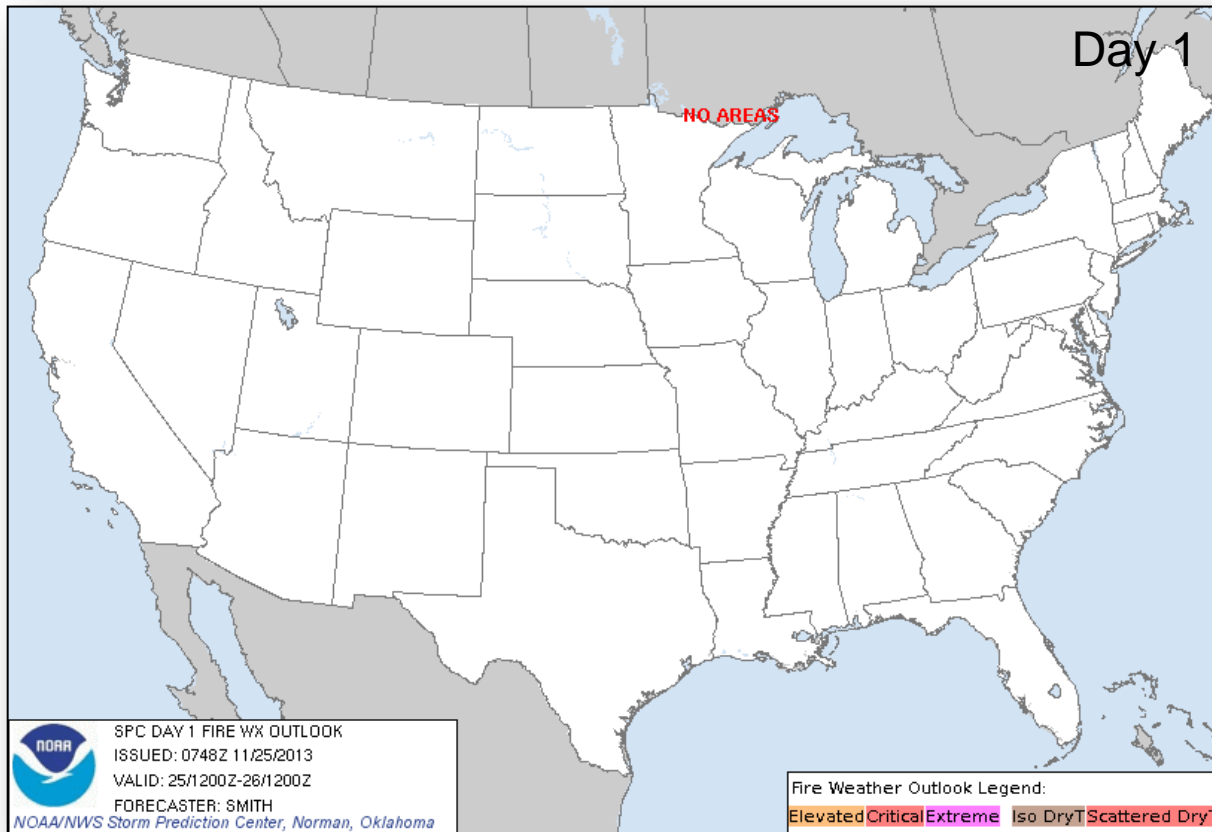
# River Forecast – 7 Day



# Convective Outlooks Days 1 – 3

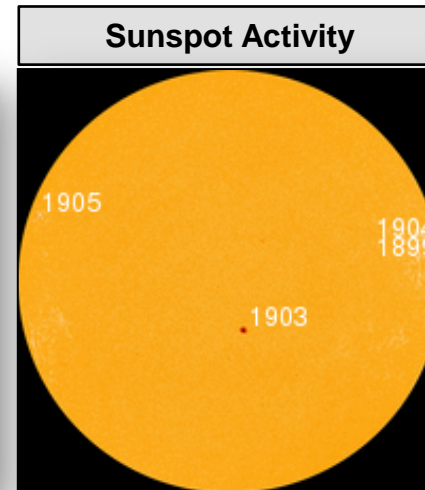
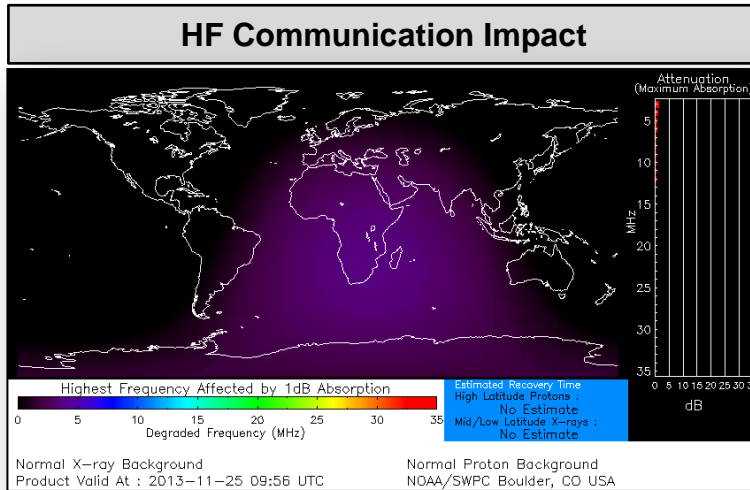


# Critical Fire Weather Areas Days 1 – 8

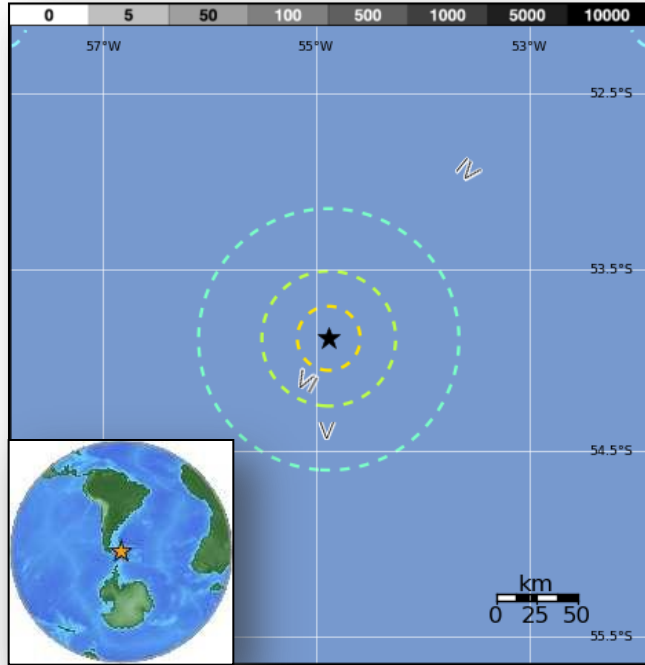


# Space Weather

NOAA Scales Activity (Range: 1/minor to 5/extreme)	Past 24 Hours	Current	Next 24 Hours
Space Weather Activity:	None	None	None
• Geomagnetic Storms	None	None	None
• Solar Radiation Storms	None	None	None
• Radio Blackouts	None	None	None



# Earthquake Activity – International



## M 7.0 – South Atlantic Ocean

- Occurred at 1:27 am EST on November 25, 2013
  - 195 miles SE from Stanley, Falkland Island
  - 545 miles SE from southern tip of Argentina
  - Depth of 6.2 miles
- Possible aftershock from the M7.8 earthquake on Nov 17
- USGS issued a green PAGER alert indicating:
  - Low likelihood of casualties and damage
  - No population exposed to earthquake shaking
- No reports of injury or damage
- No tsunami generated

Estimated <a href="#">Modified Mercalli Intensity</a>	I	II-III	IV	V	VI	VII	VIII	IX	X	
Est. Population Exposure	--*	--*	0k	0k	0k	0k	0k	0k	0k	
Perceived Shaking	Not Felt	Weak	Light	Moderate	Strong	Very Strong	Severe	Violent	Extreme	
Potential Structure Damage	Resistant	none	none	none	V.Light	Light	Moderate	Moderate/Heavy	Heavy	V.Heavy
	Vulnerable	none	none	none	Light	Moderate	Moderate/Heavy	Heavy	V.Heavy	V.Heavy



# Disaster Requests & Declarations



<b>Declaration Requests in Process</b>		<b>Requests APPROVED (since last report)</b>	<b>Requests DENIED (since last report)</b>
<b>2</b>	<b>Date Requested</b>	<b>0</b>	<b>0</b>
<b>NE – DR Severe Storms, Tornadoes, Winter Storms, and Flooding</b>	<b>November 13, 2013</b>		
<b>Rosebud Sioux Tribe – DR (Appeal) Severe Storms, Straight-line Winds, and Flooding</b>	<b>October 29, 2013</b>		

# Disaster Amendments



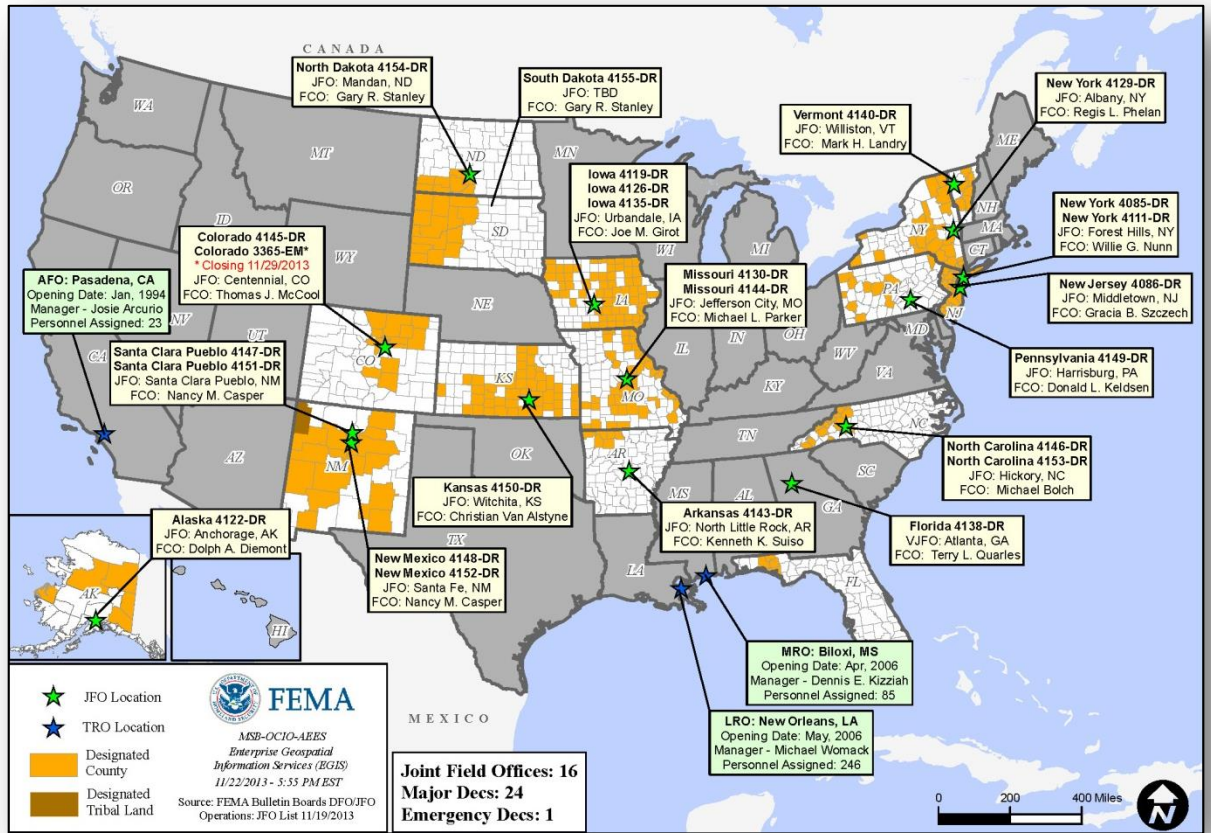
Amendment	Effective Date	Action
Amendment No. 1 to FEMA-4149-DR-PA	November 22, 2013	Added Allegheny County for Public Assistance

# Joint Preliminary Damage Assessments



Region	State / Location	Event	IA/PA	Number of Counties		Start – End
				Requested	Complete	
V	IL	Severe Storms and Tornadoes November 17-18, 2013	IA	15	4	11/21-TBD
			PA	15	0	12/2-TBD
	IN	Severe Storms and Tornadoes November 17-18, 2013	IA	1	0	11/24-11/27
X	AK	Kenai Peninsula Southern Borough Flooding October 27-28, 2013	PA	1	1	11/19-11/22

# Open Field Offices as of November 25, 2013



# OFDC Cadre Member Status



## Federal Coordinating Officer

Total	Deployed	Detailed	Not Available	Available	Cadre Status
40	26	1	2	11	
Total Available	Type 1	Type 2	Type 3	Type 4	
11*	1	5	2	3	

\* All Type 1 FCOs are available unless deployed to a Level 1 event

## Federal Disaster Recovery Coordinator

Total	Deployed	Assigned	Available	Status
9	6	4	2	

As of: 11/22/2013

# MCOV Fleet / Deployment Status



MCOV FLEET STATUS						MCOV DISASTER SUPPORT DEPLOYMENTS					
Location	Units Assigned	Available FMC	Deployed Committed	PMC	Unavailable	DR-State	OPCON	En Route	Unit Prep	Open Request	Notes:
MERS Maynard	3	3	0			DR-4145-CO	5				
MERS Frederick	8	8	0								
MERS Thomasville	14	13	1								
DC Ft Worth	20	15	4		1						
MERS Denver	2	2	0								
MERS Bothell	4	4	0								
Sacramento	4	4	0								
<b>TOTAL</b>	<b>55</b>	<b>49</b>	<b>5</b>	<b>0</b>	<b>1</b>	<b>TOTAL</b>	<b>5</b>	<b>0</b>	<b>0</b>	<b>0</b>	
Units in route for turn-in included in above totals.											

Fully Mission Capable	<b>54</b>
Partially Mission Capable	0
Non-Mission Capable	1
<b>Total Not Deployed</b>	<b>50</b>

Data as of: 11/24/13 @ 1500

# IA Registration Statistics



## IA Registrations and IHP Amounts as of November 24, 2013 @ 1500

DR/EM # - State	Registrations	Approved Applicants	Total HA Approved	Total ONA Approved	Total IHP Approved
4145 - CO	27,553	16,173	\$50,806,964	\$4,235,040	\$55,042,004
Totals	27,553	16,173	\$50,806,964	\$4,235,040	\$55,042,004
48 hour change	+37	+16	+\$119,094	+\$17,264	+\$136,358

## NPSC Call Data for November 23, 2013

Total Calls Answered (Help Line + Registration Intake)	455
Average time to answer call	11 seconds
Maximum / Minimum time to answer a call	17 seconds / 8 seconds

# Housing Inspection Statistics



## Inspection Data as of November 24, 2013 @ 1500

DR #-State	Inspectors	Inspections Assigned	Inspections Completed	Inspection % Complete	Turnaround Time (Days)
4145 - CO	11	25,169	25,063	99.58%	2.3
TOTAL	11	25,169	25,063	99.58%	2.3
48 hour change	-1	+48	+82	+0.14%	+0.0



# IMAT Status



National Teams					
Team	Status	Team	Status	Team	Status
Blue/White/Red	Available/Mission Capable	East	Assigned/Deployed (CO)	West	Available/Mission Capable
Regional Teams					
Team	Status	Team	Status	Team	Status
Region I	Available/Mission Capable	Region V	Not Mission Capable	Region VIII	Assigned/Deployed (SD)
Region II	Available/Mission Capable	Region VI-1	Available/Mission Capable	Region IX-1	Available/Mission Capable
Region III	Assigned/Deployed (PA)	Region VI-2	Assigned/Deployed (NM)	Region IX-2	Available/Mission Capable
Region IV-1	Available/Mission Capable	Region VII	Assigned/Deployed (KS)	Region X	Not Mission Capable
Region IV-2	Assigned/Deployed (NC)				

= Available/Mission Capable     
  = Assigned/Deployed  
 = Available/Partially Mission Capable     
  = Not Mission Capable

# Urban Search & Rescue



INCIDENT SUPPORT TEAMS (Red-White-Blue) – Monthly On Call Rotation											
JAN	FEB	MAR	APR	MAY	JUN	JUL	AUG	SEP	OCT	NOV	DEC
WEST				CENTRAL				EAST			
Team	Status	Team	Status	Team	Status	Team	Status	Team	Status	Team	Status
CA-TF1	Available	AZ-TF1	Available	FL-TF1	Available	CA-TF2	Available	CO-TF1	Available	FL-TF2	Available
CA-TF3	Available	IN-TF1	Available	MA-TF1	Available	CA-TF4	Available	MO-TF1	Available	MD-TF1	Available
CA-TF5	Available	NE-TF1	Available	NY-TF1	Available	CA-TF6	Available	NM-TF1	Conditional	PA-TF1	Available
CA-TF7	Available	NV-TF1	Conditional	VA-TF1	Available	CA-TF8	Available	TN-TF1	Available	VA-TF2	Available
WA-TF1	Available	TX-TF1	Available	OH-TF1	Available			UT-TF1	Available		

= Available/Mission Capable  
 = Available/Partially Mission Capable

= Assigned/Deployed  
 = Out-of-Service

# RRCC / Regional Watch Center Status



Region	RRCC	Regional Watch Center
I	Not Activated	Maynard MOC (24/7)
II	Not Activated	24/7
III	Not Activated	24/7
IV	Not Activated	24/7
V	Level III	24/7
VI	Not Activated	Denton MOC (24/7)
VII	Not Activated	24/7
VIII	Not Activated	Denver MOC (24/7)
IX	Not Activated	24/7
X	Not Activated	Bothell MOC (24/7)

 = Not Mission Capable

 = Available/Partially Mission Capable

 = Available/Mission Capable

# National Team Status



Team/Status	Current Location	Remarks
National Watch Center	Washington, DC	Watch/Steady State
NRCC	Washington, DC	Not Activated
HLT	Miami, FL	Activated
DEST	Washington, DC	Not Activated
Mission Capable	Partially Mission Capable	Not Mission Capable



# FEMA

**FEMA's mission is to support our citizens and first responders to ensure that as a nation we work together to build, sustain, and improve our capability to prepare for, protect against, respond to, recover from, and mitigate all hazards.**