



FEMA

Daily Operations Briefing

Wednesday, November 20, 2013

8:30 a.m. EST

Significant Activity: Nov 19 – 20



Significant Events: Severe weather recovery

Tropical Activity:

- Atlantic – Subtropical Storm Melissa
- Eastern Pacific – Tropical cyclone activity not expected next 48 hours
- Central Pacific – No tropical cyclones expected through late Thurs night
- Western Pacific – No activity threatening U.S. territories

Significant Weather:

- Rain and snow – Central Great Basin and Great Lakes
- Snow – Northern Intermountain to Central Plains and Upper Mississippi Valley
- Showers and thunderstorms – Midwest to Lower Mississippi Valley and Southern Plains
- Critical Fire Weather Areas/Red Flag Warnings: None
- Space Weather: Past 24 hours - none; next 24 hours - none

Earthquake Activity: None

Declaration Activity: None

Severe Weather Outbreak – Nov 17-18



FEMA Region V

- RRCC activated to Level III; RWC remains at Watch/Steady State
- IMAT and LNO deployed to IL
- ▲ Joint PDAs for 13 counties in IL
 - IA to begin Nov 21
 - PA to begin Dec 2
- ▲ Region-wide data:
 - Fatalities/injured: 8/43 unconfirmed (open source reporting 150-200)
 - Power outages: 113,530 (peak 753,352)
 - 19 shelters open with 95 occupants



Washington, IL

FEMA HQ

- ▲ NWC transitioned from Enhanced to Watch/Steady State



Brookport, IL

Severe Weather Outbreak – Nov 17-18

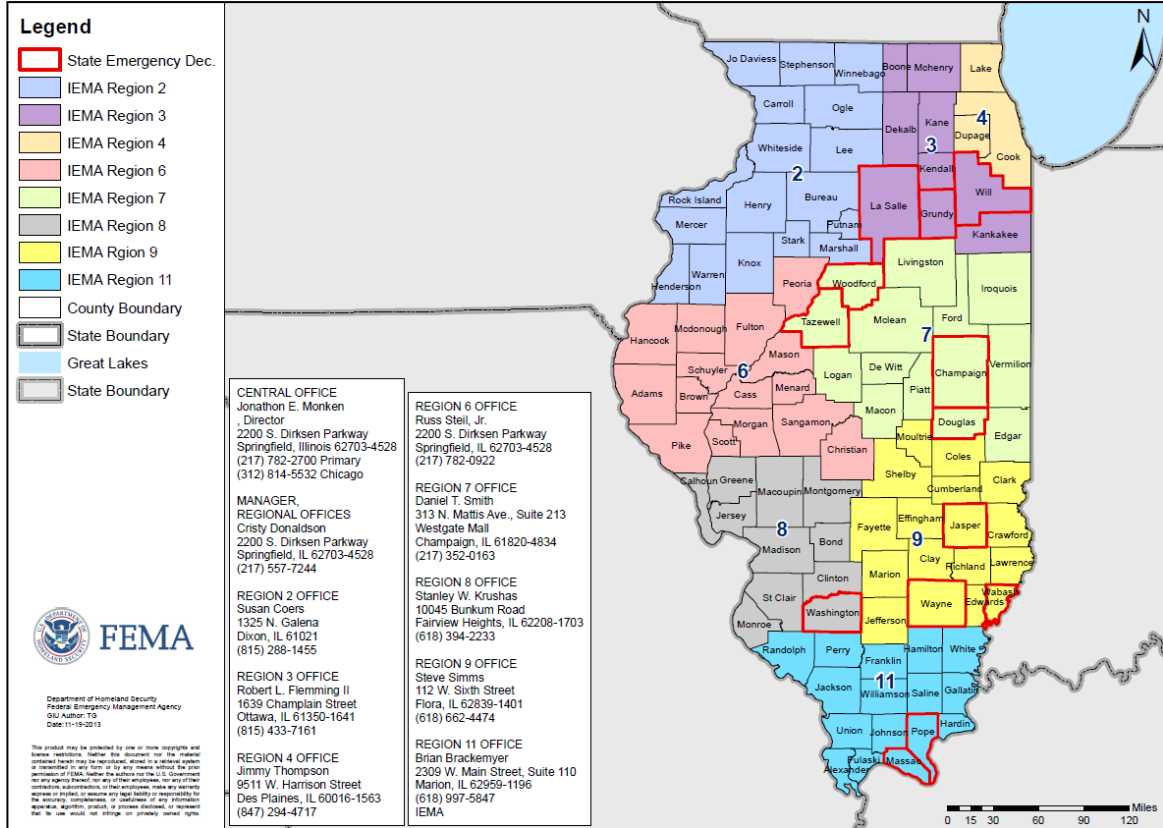


- Illinois
 - SEOC at Level III (Limited Staffing)
 - ▲ Governor declared state of disaster for 13 (+6) counties
 - 6 confirmed fatalities; 37 unconfirmed injuries (open source reporting 150-200)
 - 3,334 customers remain without power
 - 856 homes damaged (open source); assessments ongoing
 - 5 shelters open with 23 occupants
- Ohio
 - ▲ SEOC returned to Normal Operations
 - No fatalities; 4 minor injuries
 - 144 customers remain without power
 - 34 homes, 9 businesses, 1 emergency communications tower damaged; assessments ongoing
 - ▲ All shelters closed
- Indiana
 - SEOC returned to Normal Operations
 - No fatalities; 2 injuries
 - 5,980 customers remain without power
 - 56 homes and 2 schools damaged
 - 3 shelters open with 30 occupants
- Michigan
 - SEOC at Normal Operations
 - 2 confirmed fatalities
 - 104,072 customers remain without power
 - 11 shelters open with 42 occupants

Severe Weather Outbreak – Nov 17-18



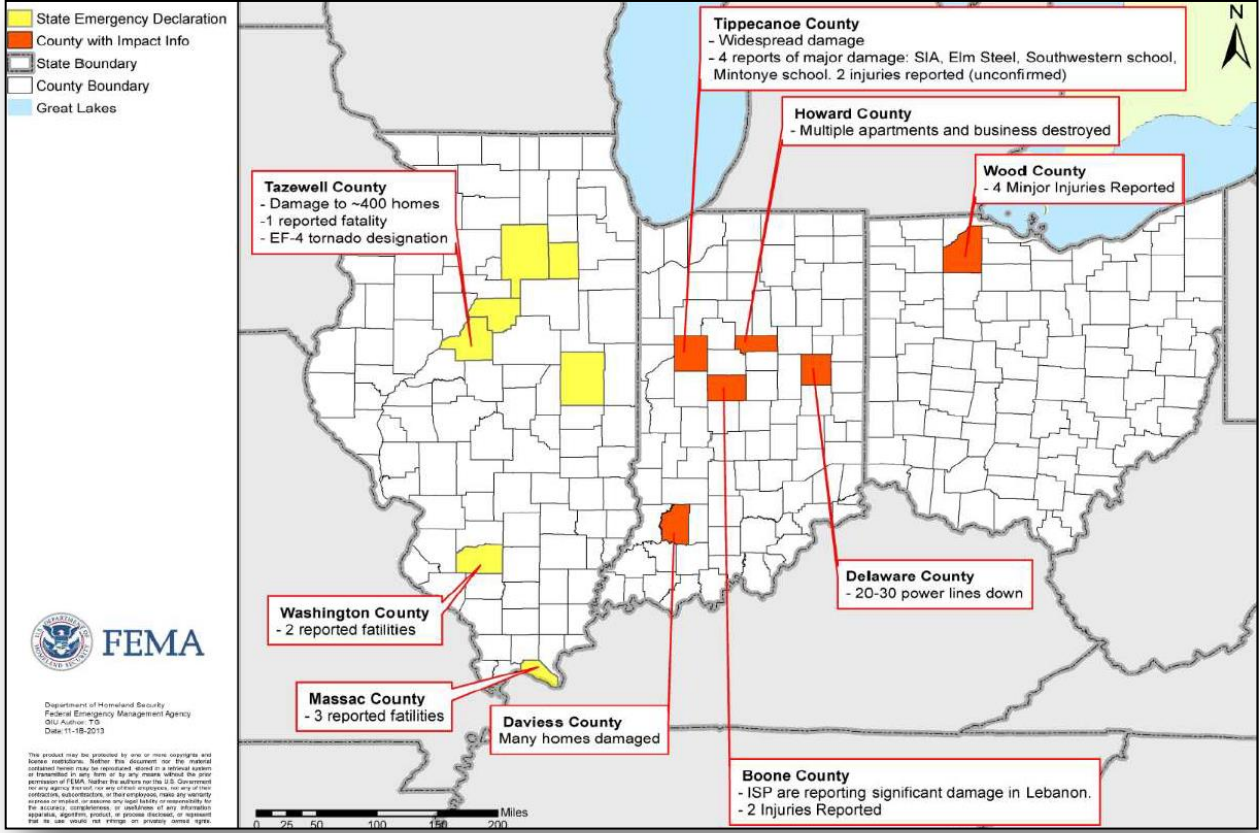
FEMA



Severe Weather Outbreak – Nov 17-18



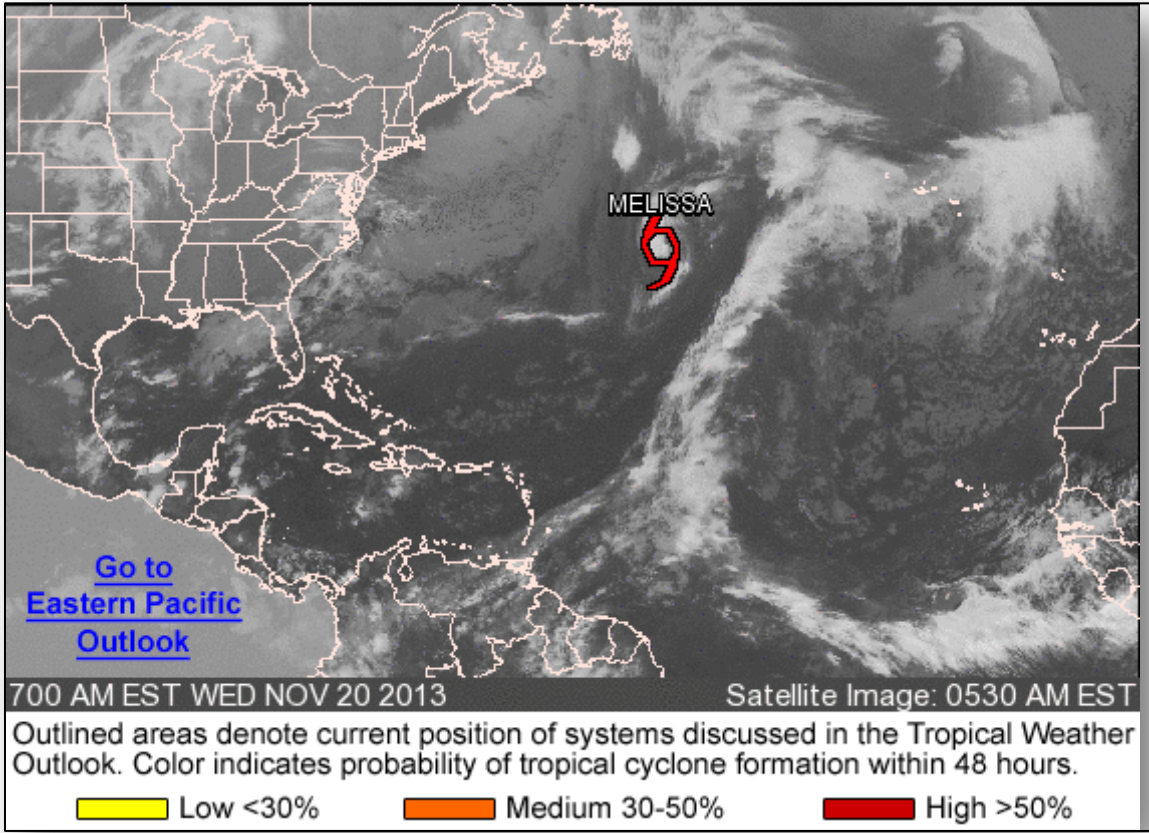
FEMA



Atlantic – Tropical Outlook



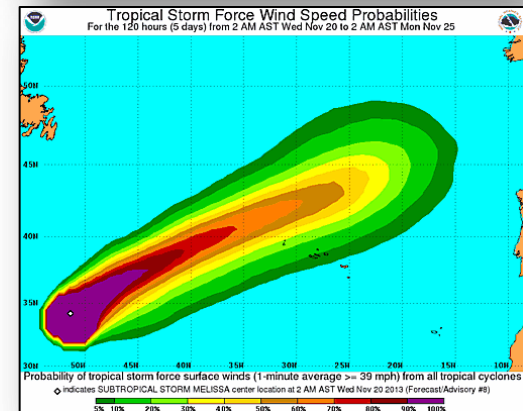
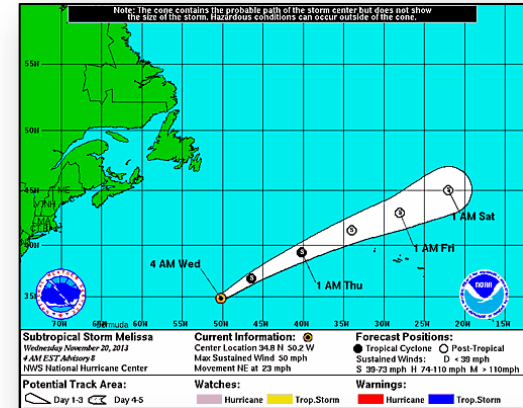
FEMA



Atlantic – Subtropical Storm Melissa

As of 4:00 a.m. EST

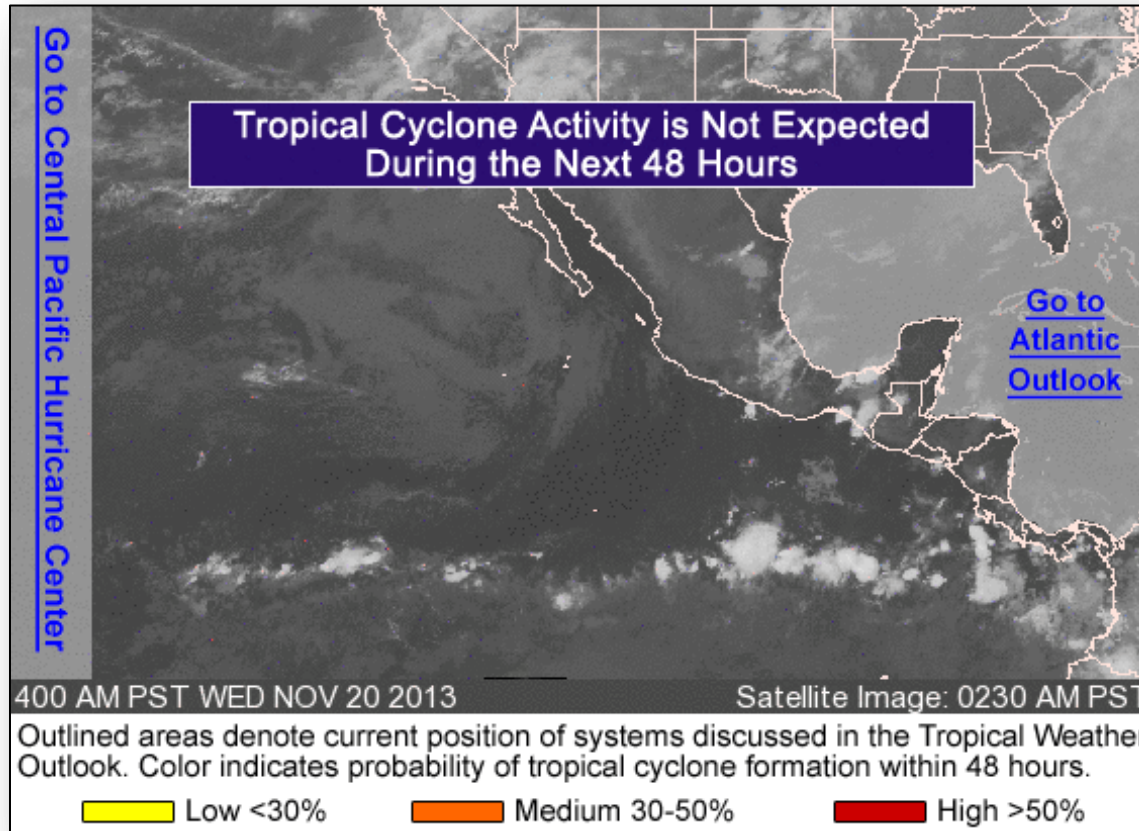
- Located 855 miles ENE of Bermuda
- Moving NE at 23 mph
- This general motion with slight increase in forward speed expected next couple of days
- Maximum sustained winds 50 mph
- Little change in strength forecast next 48 hours
- Could transition to tropical storm later today
- Expected to become post-tropical cyclone tonight or Thurs
- Tropical storm force winds extend 205 miles
- No coastal watches or warnings in effect
- Life-threatening surf and rip currents could affect Puerto Rico



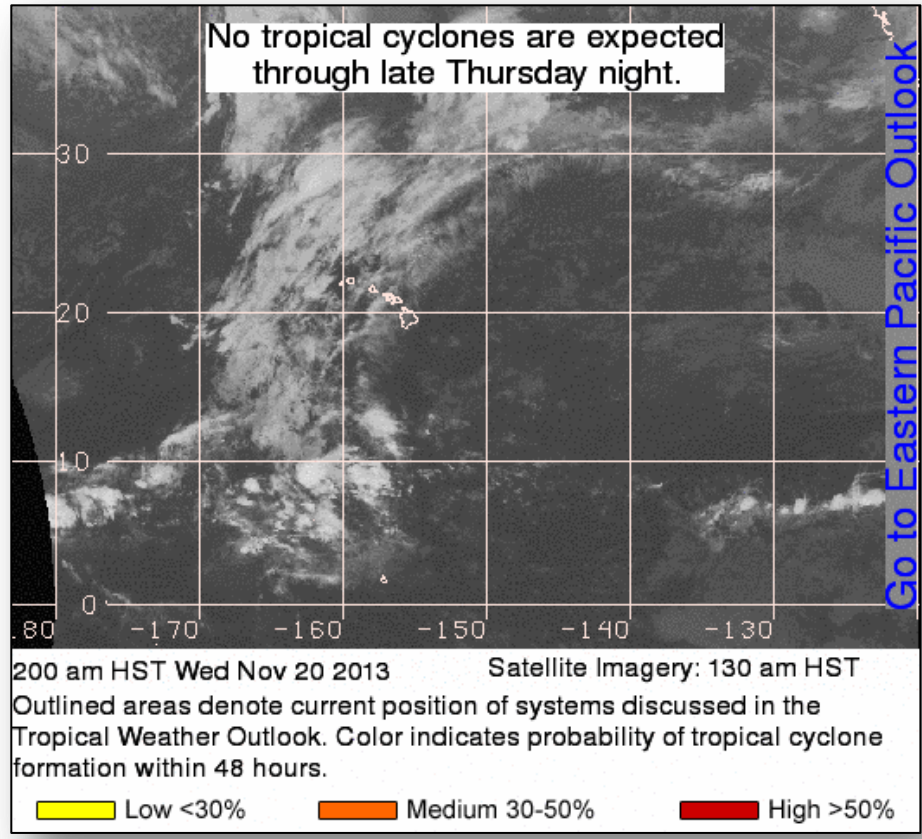
Eastern Pacific – Tropical Outlook



FEMA



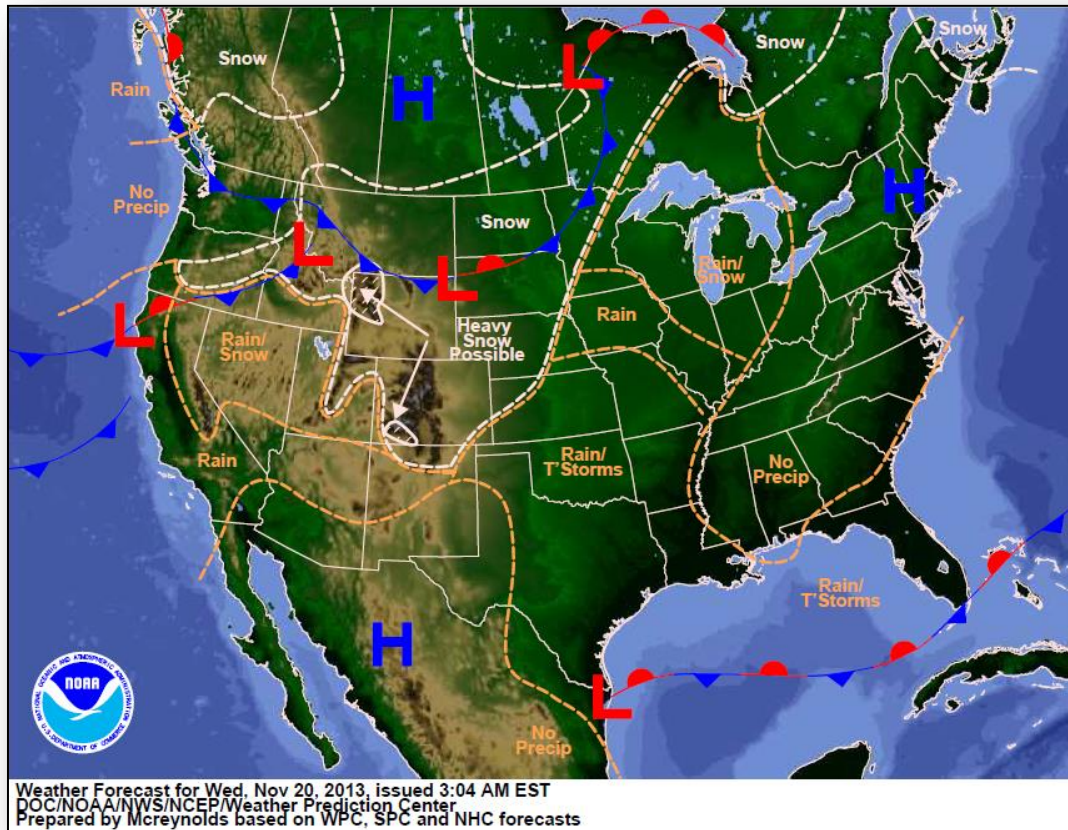
Central Pacific – Tropical Outlook



National Weather Forecast



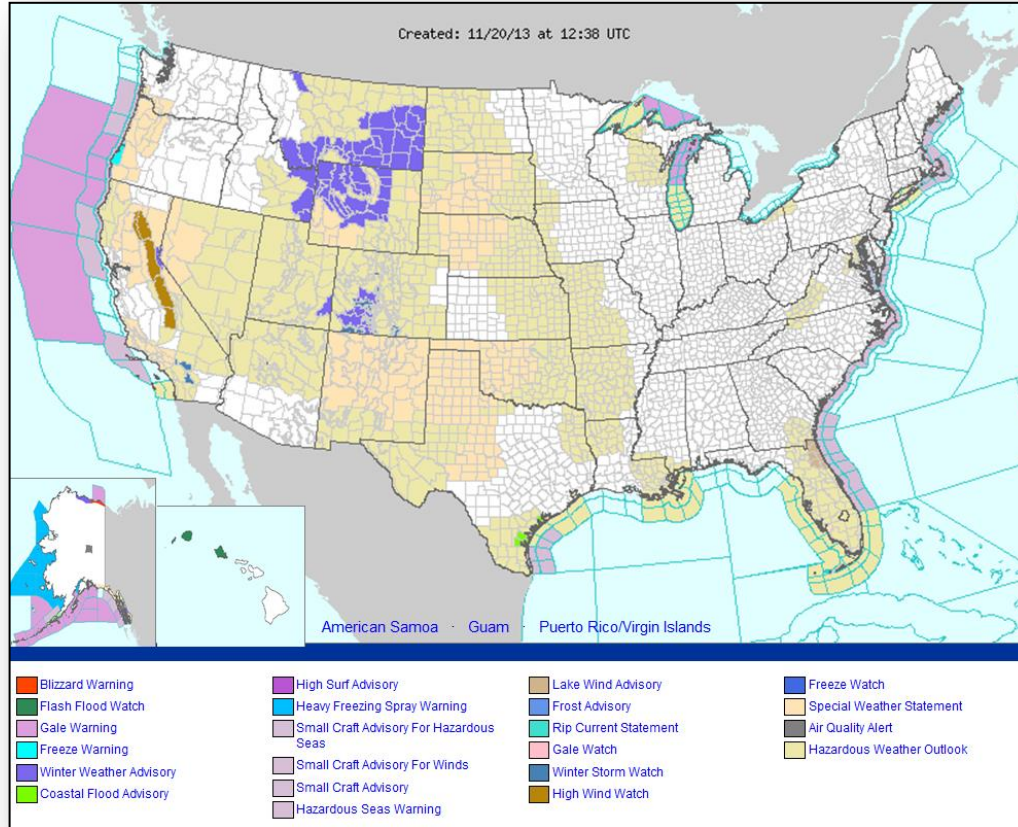
FEMA



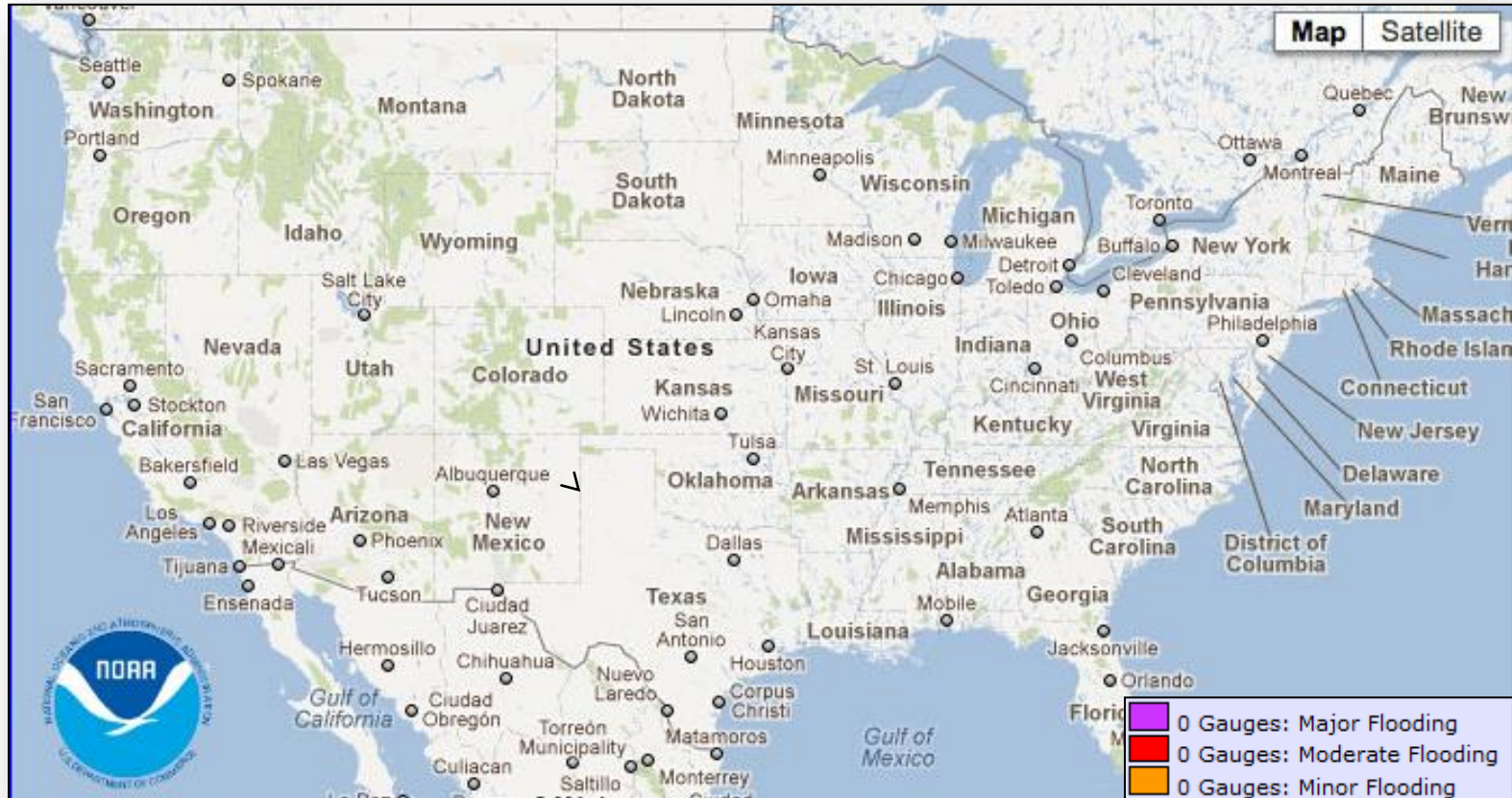
Active Watches/Warnings



FEMA



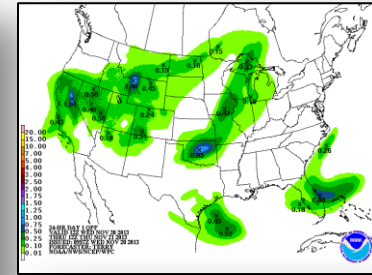
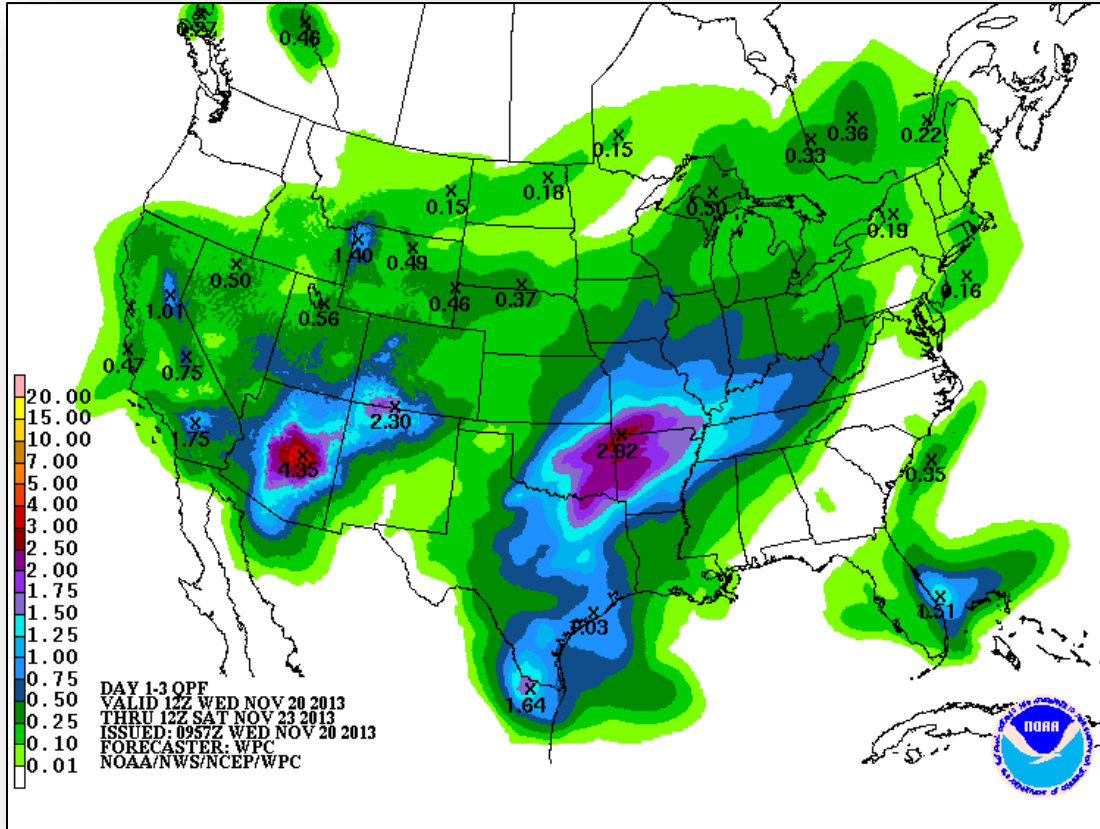
River Forecast – 7 Day



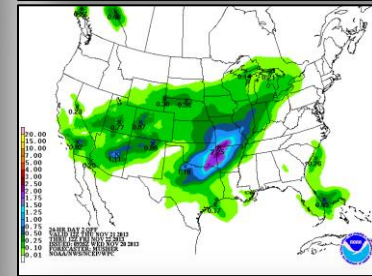
Precipitation Forecast – 3 Day



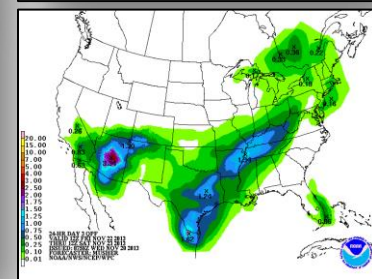
FEMA



Day 1

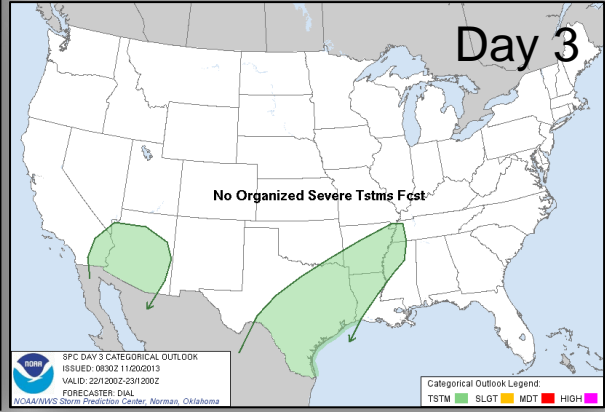
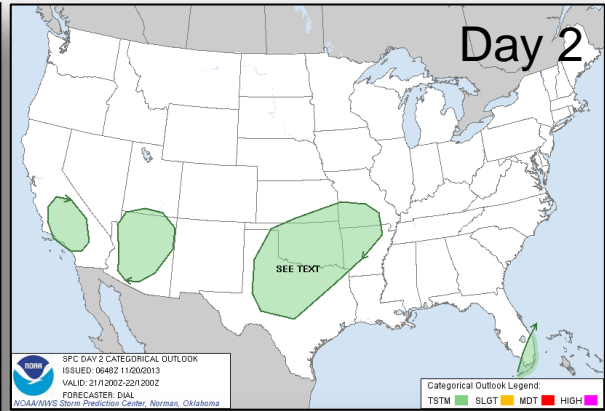
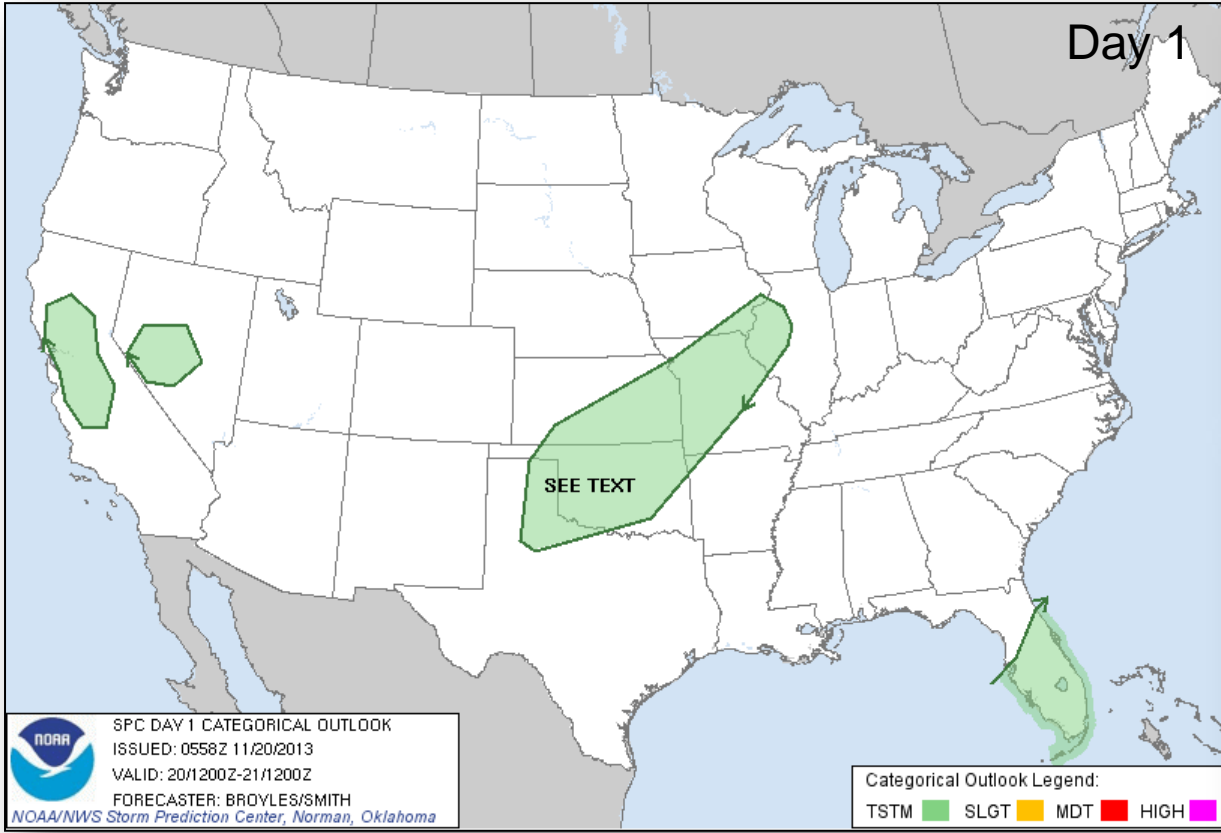


Day 2

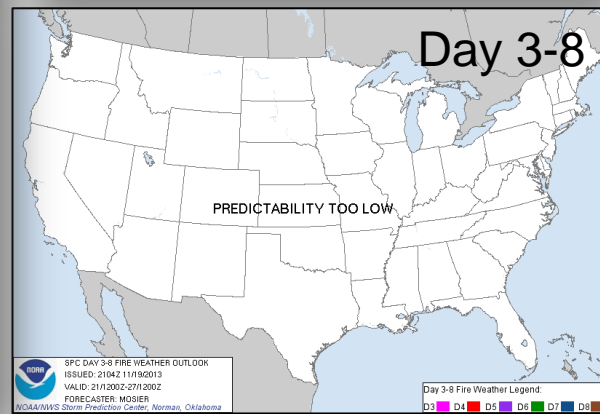
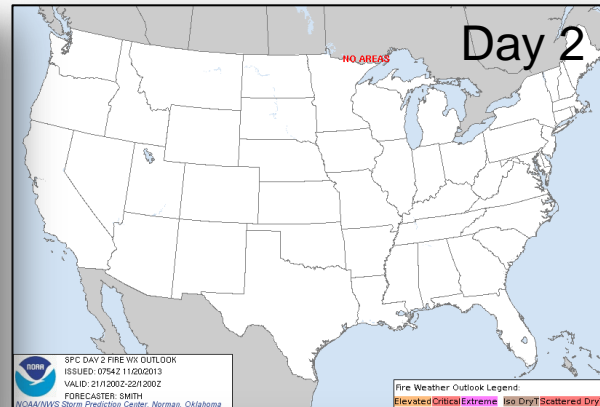
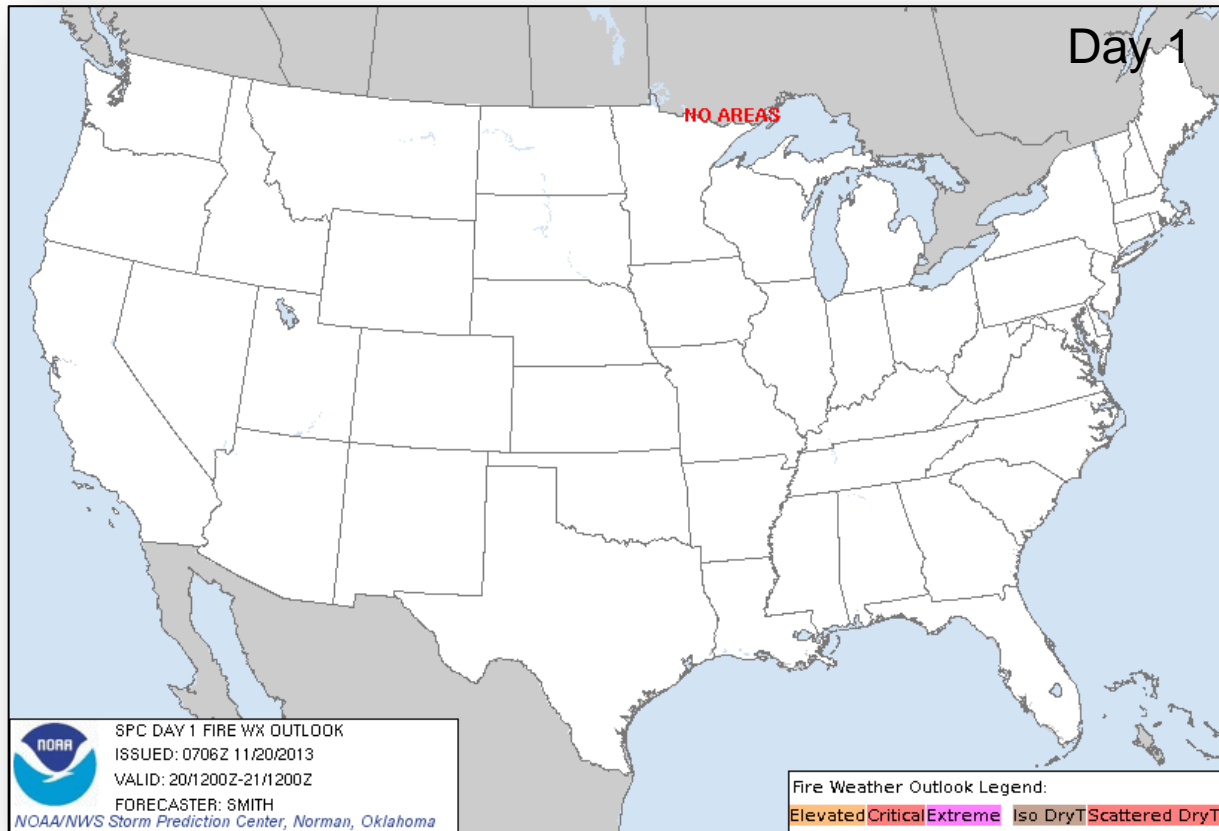


Day 3

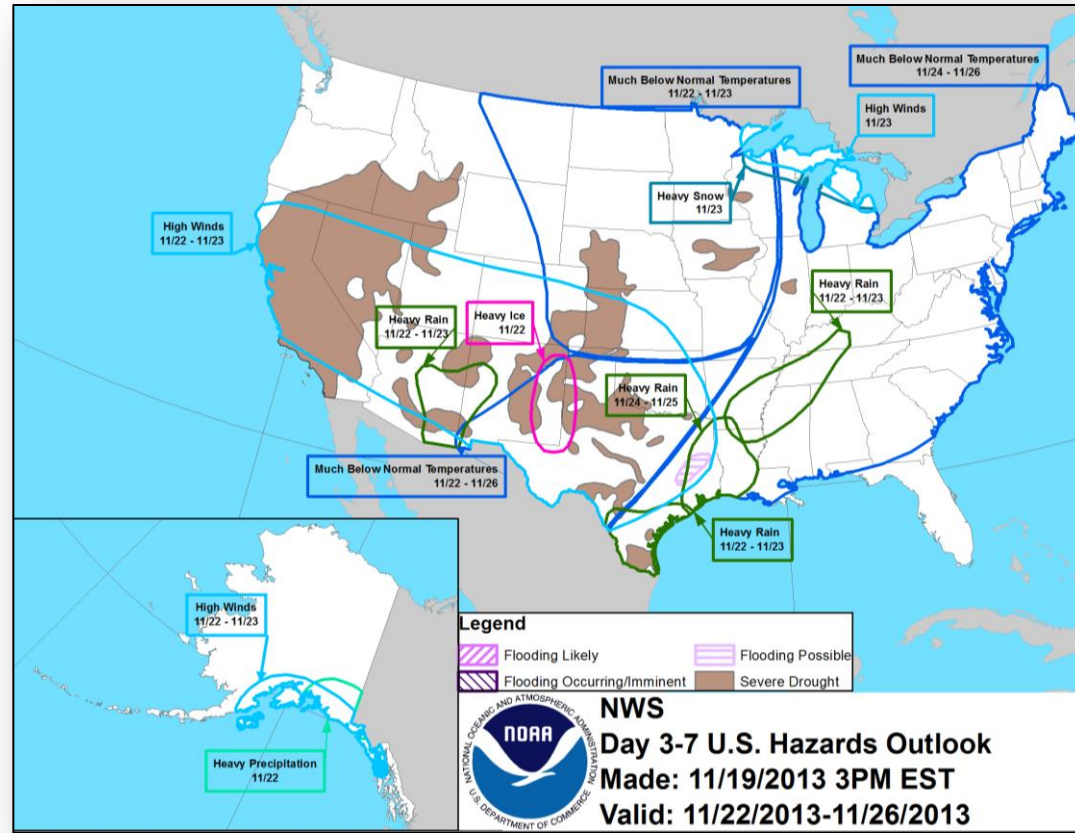
Convective Outlooks Days 1 – 3



Critical Fire Weather Areas Days 1 – 8

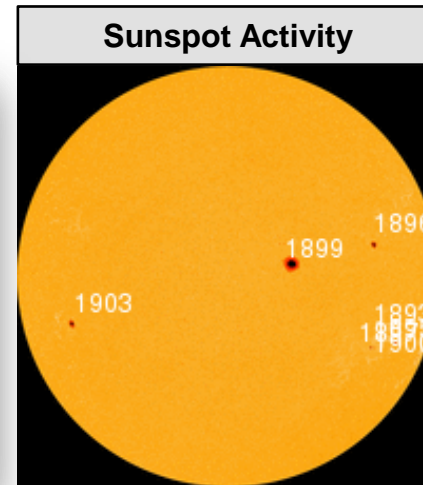
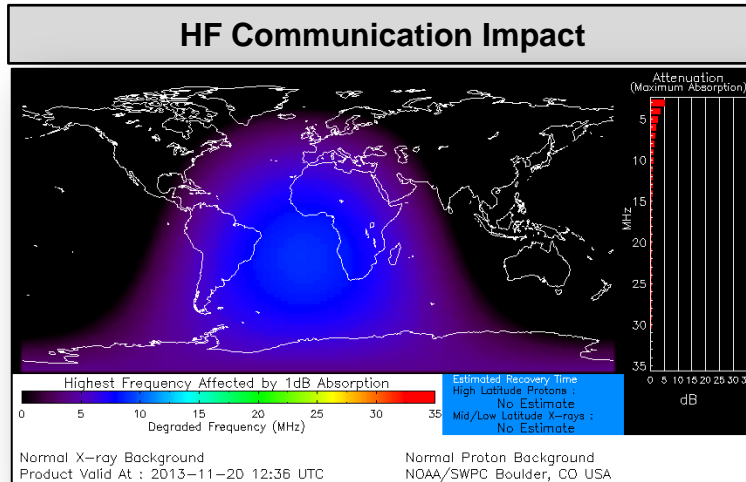


Hazard Outlook: Nov 22 - 26



Space Weather

NOAA Scales Activity (Range: 1/minor to 5/extreme)	Past 24 Hours	Current	Next 24 Hours
Space Weather Activity:	None	None	None
• Geomagnetic Storms	None	None	None
• Solar Radiation Storms	None	None	None
• Radio Blackouts	None	None	None



Disaster Requests & Declarations



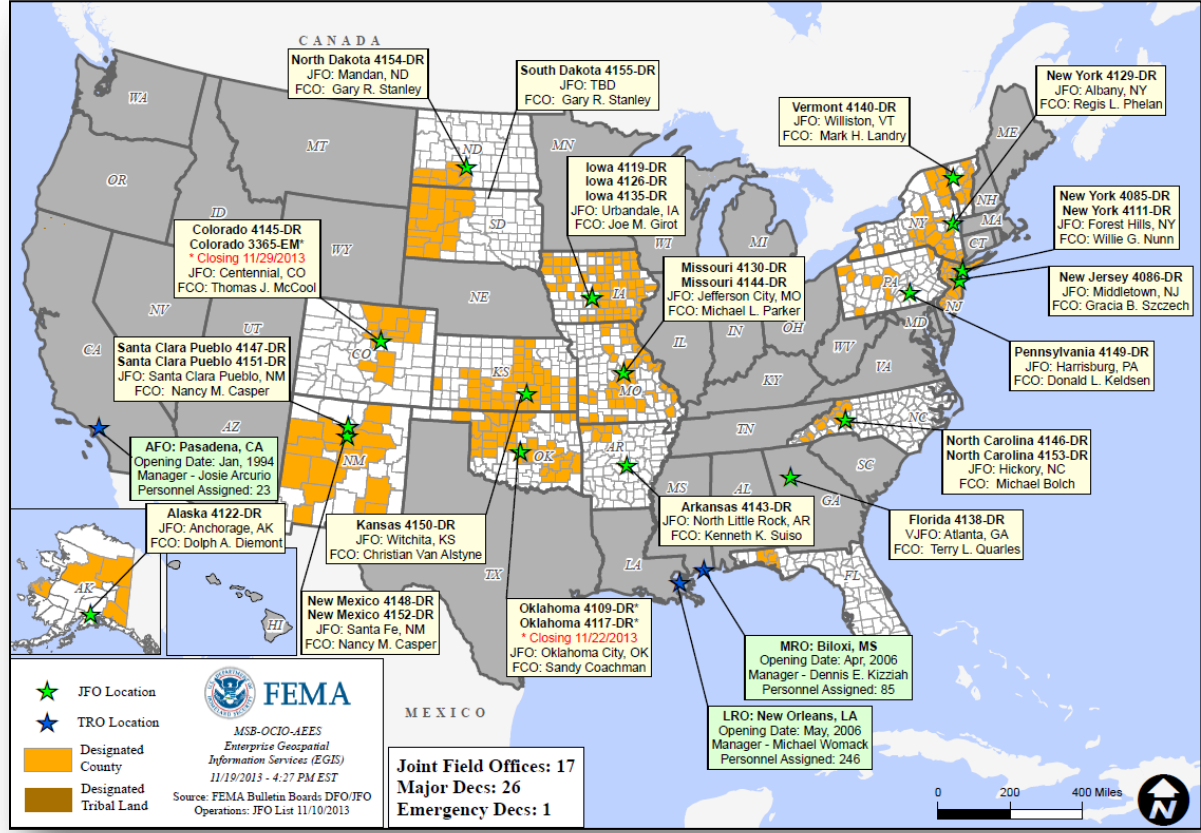
Declaration Requests in Process		Requests APPROVED (since last report)	Requests DENIED (since last report)
1	Date Requested	0	0
NE – DR Severe Storms, Tornadoes, Winter Storms, and Flooding	November 13, 2013		

Joint Preliminary Damage Assessments



Region	State / Location	Event	IA/PA	Number of Counties		Start – End
				Requested	Complete	
V	IL	Severe Storms and Tornadoes November 17-18, 2013	IA	13	0	11/21-TBD
			PA	13	0	12/2-TBD
X	AK	Kenai Peninsula Southern Borough Flooding October 27-28, 2013	PA	1	0	11/19-11/21

Open Field Offices as of November 20, 2013



OFDC Cadre Member Status



Federal Coordinating Officer

Total	Deployed	Detailed	Not Available	Available	Cadre Status
40	26	1	2	11	
Total Available	Type 1	Type 2	Type 3	Type 4	
11*	1	5	2	3	

* All Type 1 FCOs are available unless deployed to a Level 1 event

Federal Disaster Recovery Coordinator

Total	Deployed	Assigned	Available	Status
9	6	4	2	

As of: 11/19/2013

MCOV Fleet / Deployment Status



MCOV FLEET STATUS						MCOV DISASTER SUPPORT DEPLOYMENTS					
Location	Units Assigned	Available FMC	Deployed Committed	PMC	Unavailable	DR-State	OPCON	En Route	Unit Prep	Open Request	Notes:
MERS Maynard	3	3	0			DR-4145-CO	5				
MERS Frederick	8	8	0								
MERS Thomasville	14	13	1								
DC Ft Worth	20	16	4								
MERS Denver	2	2	0								
MERS Bothell	4	4	0								
Sacramento	4	4	0								
TOTAL	55	50	5	0	0	TOTAL	5	0	0	0	
Units in route for turn-in included in above totals.											

Fully Mission Capable	55
Partially Mission Capable	0
Non-Mission Capable	0
Total Not Deployed	50

Data as of: 11/19/13 @ 1500

IA Registration Statistics



IA Registrations and IHP Amounts as of November 19, 2013 @ 1500

DR/EM # - State	Registrations	Approved Applicants	Total HA Approved	Total ONA Approved	Total IHP Approved
4145 - CO	27,434	16,094	\$50,090,943	\$4,173,579	\$54,264,522
Totals	27,434	16,094	\$50,090,943	\$4,173,579	\$54,264,522
24 hour change	+30	+31	+\$255,416	+\$26,976	+\$282,392

NPSC Call Data for November 18, 2013

Total Calls Answered (Help Line + Registration Intake)	1,833
Average time to answer call	12 seconds
Maximum / Minimum time to answer a call	18 seconds / 10 seconds

Housing Inspection Statistics



Inspection Data as of November 19, 2013 @ 1500

DR #-State	Inspectors	Inspections Assigned	Inspections Completed	Inspection % Complete	Turnaround Time (Days)
4145 - CO	15	24,976	24,812	99.34%	2.3
TOTAL	15	24,976	24,812	99.34%	2.3
24 hour change	0	+59	+83	+0.10%	-0.0

IMAT Status



National Teams					
Team	Status	Team	Status	Team	Status
Blue/White	Available/Mission Capable	East	Assigned/Deployed (CO)	West	Available/Mission Capable
Regional Teams					
Team	Status	Team	Status	Team	Status
Region I	Available/Mission Capable	Region V	Assigned/Deployed (IL)	Region VIII	Assigned/Deployed (SD)
Region II	Available/Mission Capable	Region VI-1	Available/Mission Capable	Region IX-1	Available/Mission Capable
Region III	Assigned/Deployed (PA)	Region VI-2	Assigned/Deployed (NM)	Region IX-2	Available/Mission Capable
Region IV-1	Available/Mission Capable	Region VII	Assigned/Deployed (KS)	Region X	Not Mission Capable
Region IV-2	Assigned/Deployed (NC)	Incident Management Assistance Team			

= Available/Mission Capable
 = Assigned/Deployed
 = Available/Partially Mission Capable
 = Not Mission Capable

Urban Search & Rescue



INCIDENT SUPPORT TEAMS (Red-White-Blue) – Monthly On Call Rotation											
JAN	FEB	MAR	APR	MAY	JUN	JUL	AUG	SEP	OCT	NOV	DEC
WEST				CENTRAL				EAST			
Team	Status	Team	Status	Team	Status	Team	Status	Team	Status	Team	Status
CA-TF1	Available	AZ-TF1	Available	FL-TF1	Available	CA-TF2	Available	CO-TF1	Available	FL-TF2	Available
CA-TF3	Available	IN-TF1	Available	MA-TF1	Available	CA-TF4	Available	MO-TF1	Available	MD-TF1	Available
CA-TF5	Available	NE-TF1	Available	NY-TF1	Available	CA-TF6	Available	NM-TF1	Conditional	PA-TF1	Available
CA-TF7	Available	NV-TF1	Conditional	VA-TF1	Available	CA-TF8	Available	TN-TF1	Available	VA-TF2	Available
WA-TF1	Available	TX-TF1	Available	OH-TF1	Available			UT-TF1	Available		

= Available/Mission Capable
 = Available/Partially Mission Capable

= Assigned/Deployed
 = Out-of-Service

RRCC / Regional Watch Center Status



Region	RRCC	Regional Watch Center
I	Not Activated	Maynard MOC (24/7)
II	Not Activated	24/7
III	Not Activated	24/7
IV	Not Activated	24/7
V	Level III	24/7
VI	Not Activated	Denton MOC (24/7)
VII	Not Activated	24/7
VIII	Not Activated	Denver MOC (24/7)
IX	Not Activated	24/7
X	Not Activated	Bothell MOC (24/7)

 = Not Mission Capable

 = Available/Partially Mission Capable

 = Available/Mission Capable

National Team Status



Team/Status	Current Location	Remarks
National Watch Center	Washington, DC	Watch/Steady State
NRCC	Washington, DC	Not Activated
HLT	Miami, FL	Activated
DEST	Washington, DC	Not Activated
Mission Capable	Partially Mission Capable	Not Mission Capable



FEMA

FEMA's mission is to support our citizens and first responders to ensure that as a nation we work together to build, sustain, and improve our capability to prepare for, protect against, respond to, recover from, and mitigate all hazards.