



FEMA

Daily Operations Briefing

Friday, November 15, 2013

8:30 a.m. EST



FEMA

Significant Activity: Nov 14 – 15

Significant Events: Super Typhoon Haiyan (Final)

Tropical Activity:

- Atlantic Pacific – Tropical cyclone activity is not expected during the next 48 hours
- Eastern Pacific – Area 1 (Invest 98E)
- Central Pacific – No tropical cyclones are expected through Saturday night
- Western Pacific – No activity threatening U.S. territories

Significant Weather:

- Heavy snow is possible - portions of the Northwest
- Rain/thunderstorms – Southern Plains & Lower Mississippi Valley
- Red Flag Warning – Colorado; Elevated Fire Weather Area – Southern Plains
- Space Weather: Minor/R1 radio blackouts occurred; Next 24 hours Minor/R1 radio blackouts likely

Declaration Activity: None

Super Typhoon Haiyan (Final)



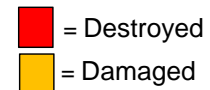
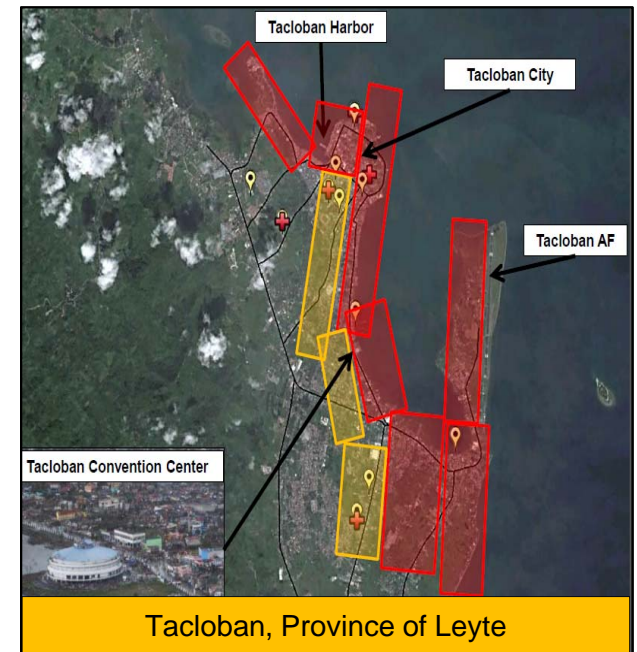
FEMA

Philippines (Nov 7-8; winds of 195 mph, gusting to 235 mph):

- An estimated 11.8 million people were affected by the storm
- 4,460 (+2,103) confirmed fatalities; 2,487 (+1,178) injured
- Approximately 600k displaced; 380k are in 1,215 evacuation centers
- Approximately 243k (+7k) homes destroyed
- City of Tacloban (pop 218k) was in direct path of Typhoon:
 - 80%-98% of buildings damaged/destroyed
- Power, water, communications and sanitation outages
- All airports and seaports open; Tacloban Airport has limited service

USG Response

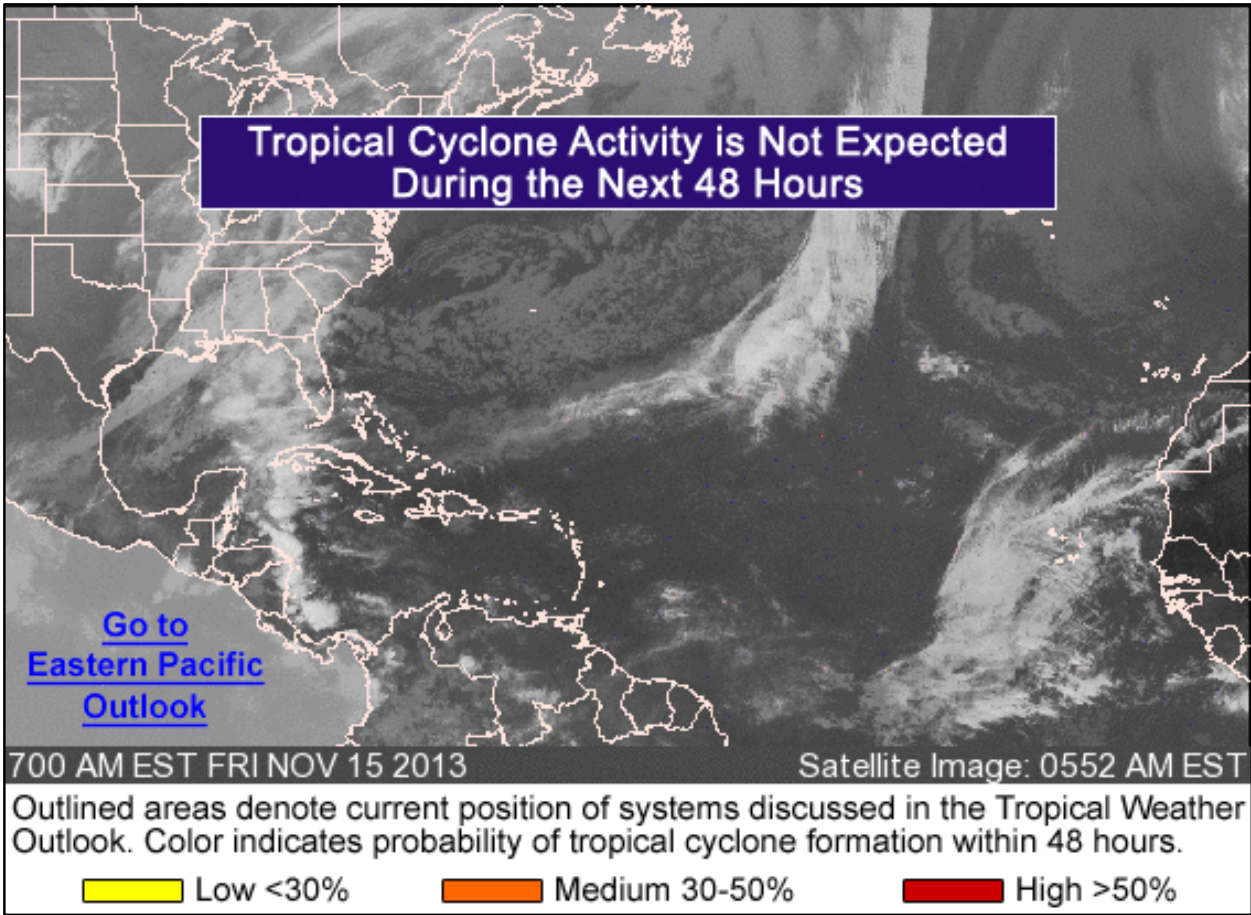
- USAID/OFDA continues as lead U.S. agency in coordinating U.S. response
- No requests for FEMA assistance



Atlantic – Tropical Outlook



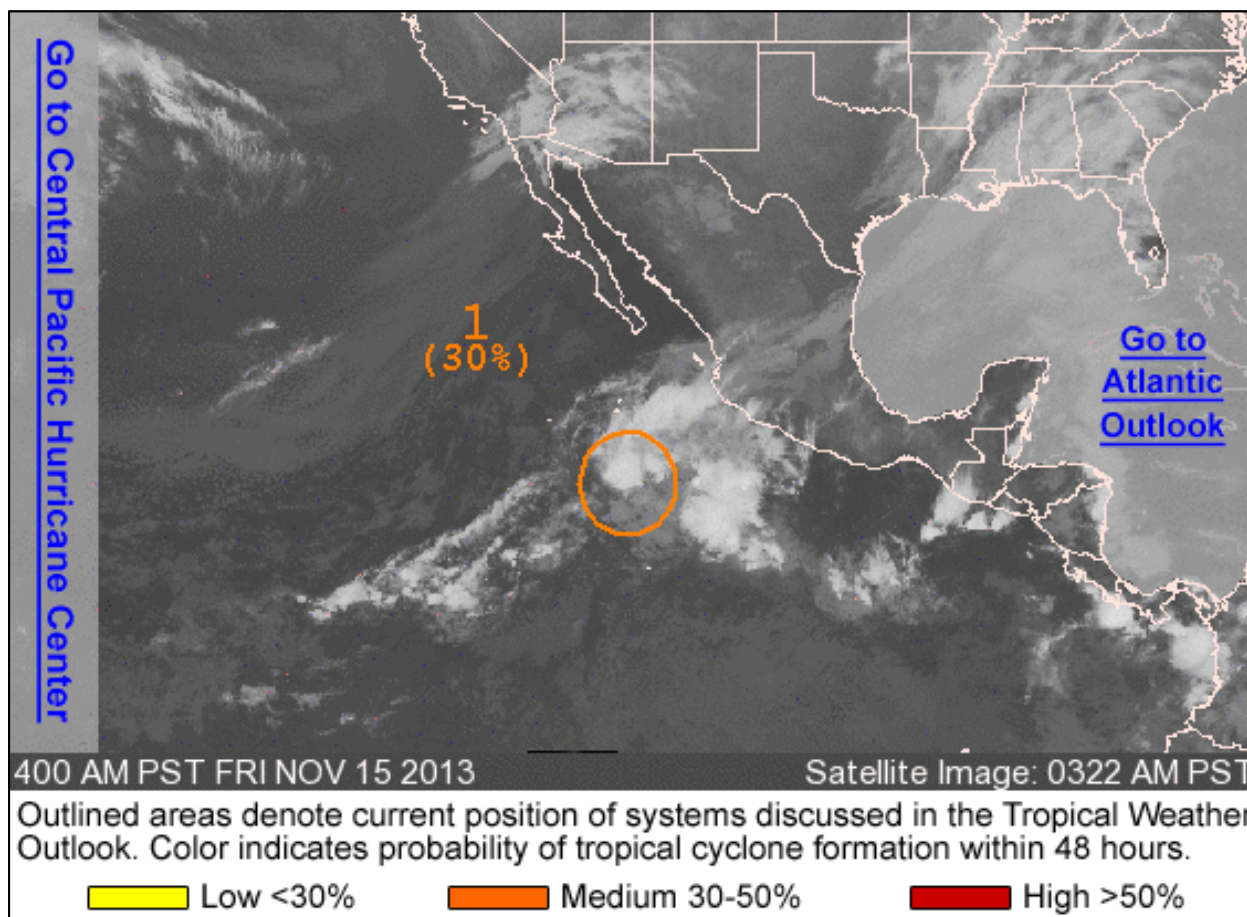
FEMA



Eastern Pacific – Tropical Outlook



FEMA



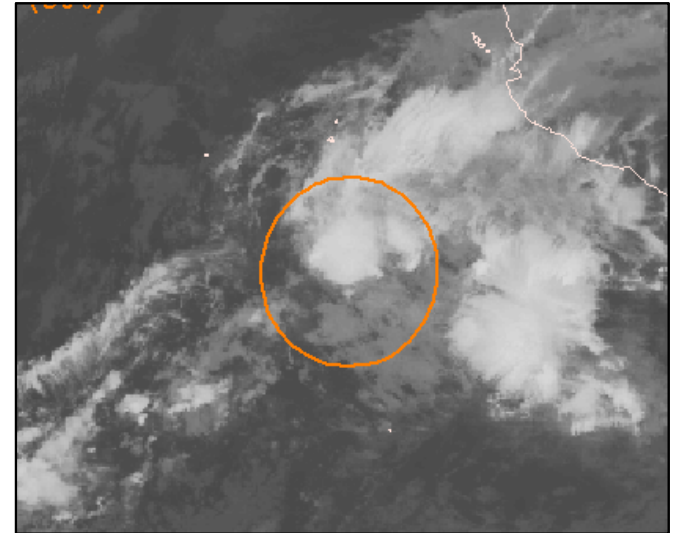
Eastern – Area 1 (Invest 98E)



FEMA

As of 5:00 a.m. EST

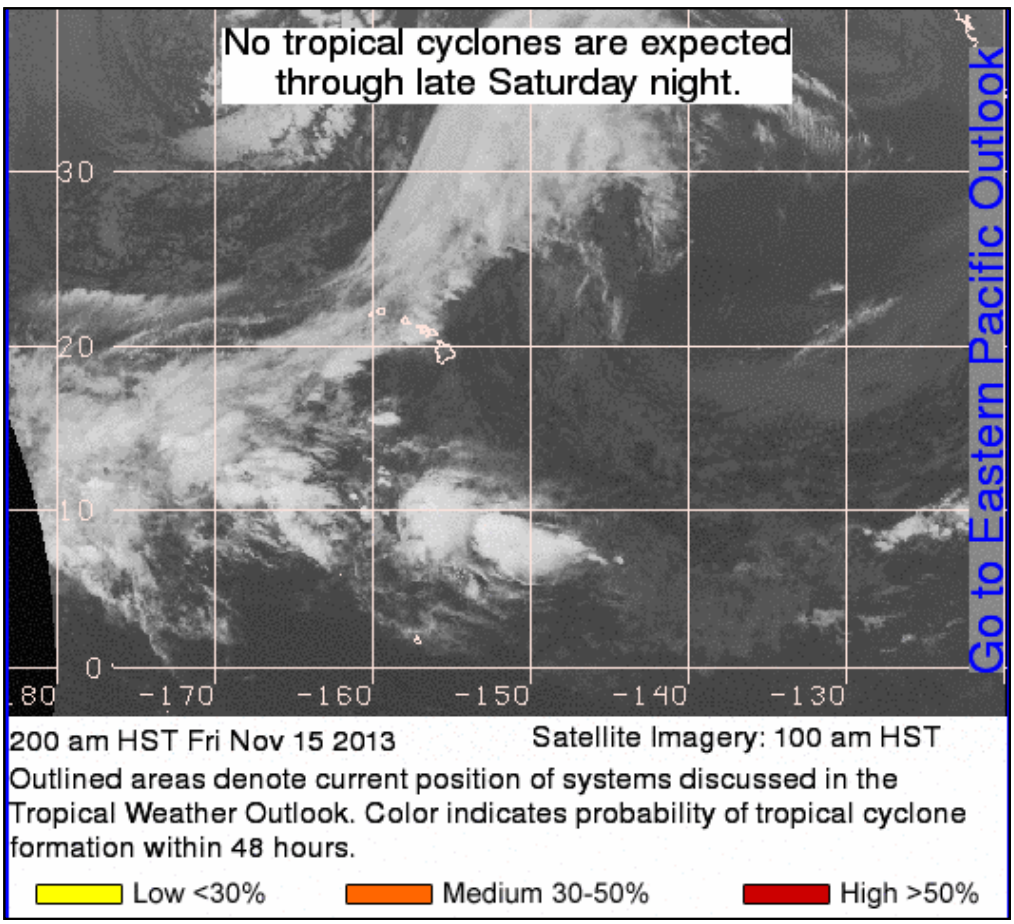
- A low pressure area producing disorganized showers and thunderstorms
- Located several hundred miles SW of Mexico
- Environmental conditions are expected to be marginally conducive for development during the next day or so
- Moving northward
- Probability of tropical cyclone development:
 - Next 48 hours: medium chance (30%)
 - Next 5 days: medium chance (30%)



Central Pacific – Tropical Outlook



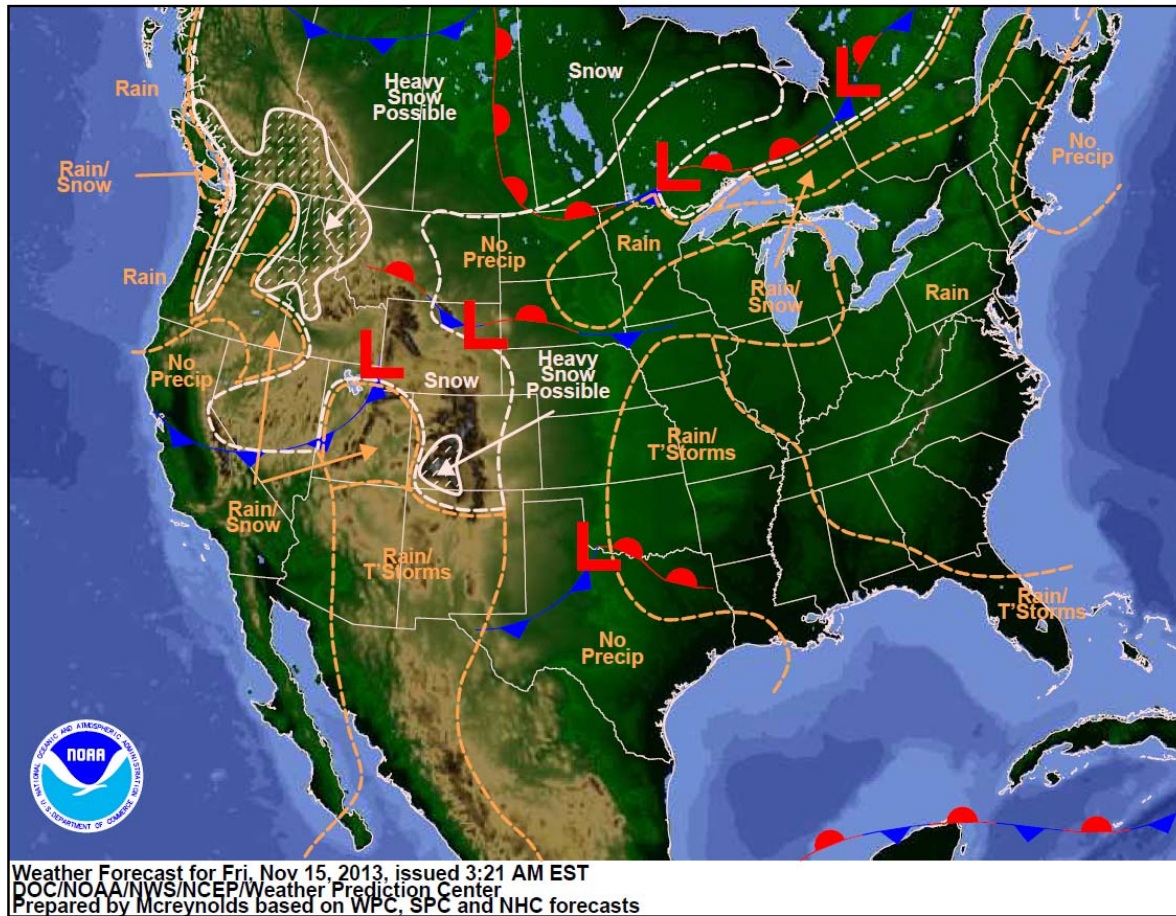
FEMA



National Weather Forecast



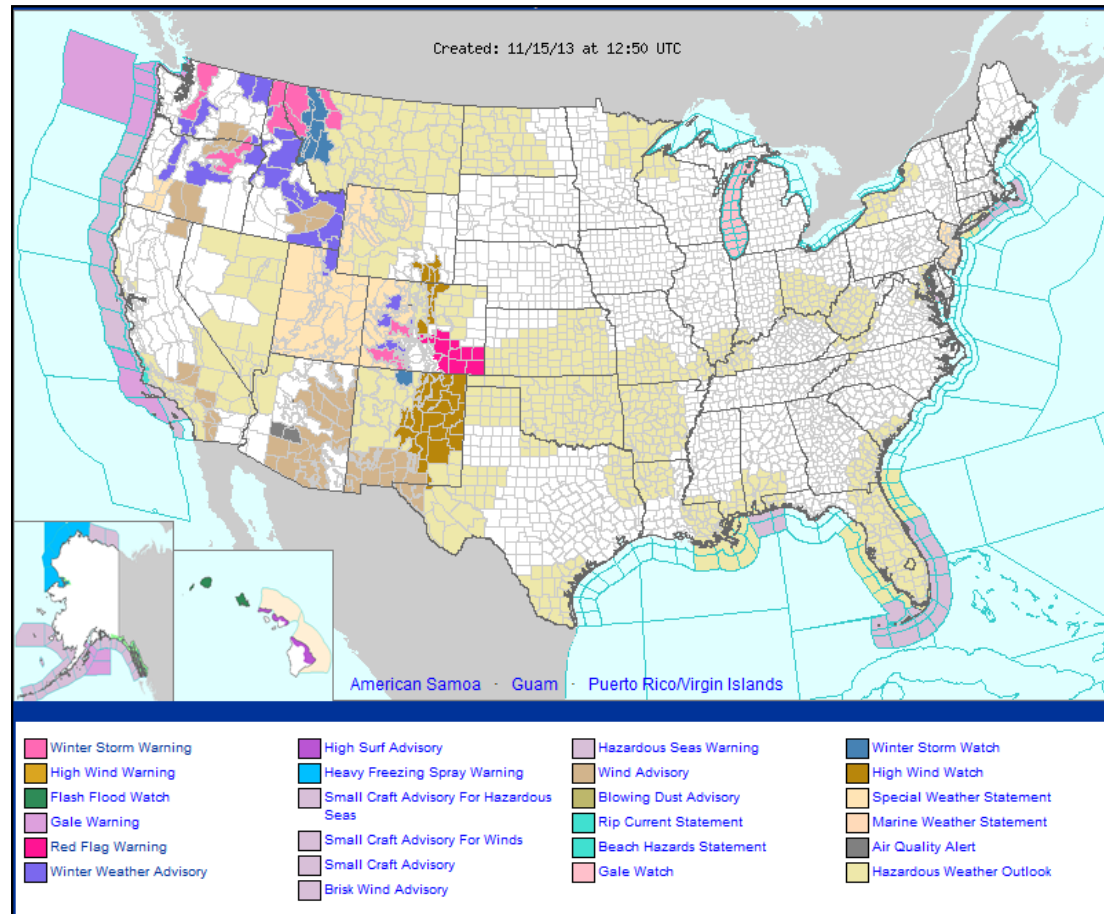
FEMA



Active Watches/Warnings



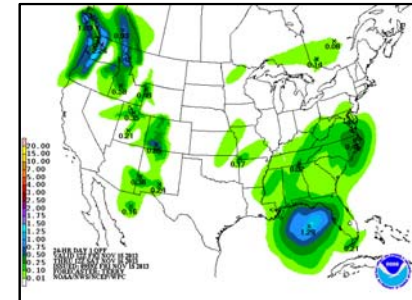
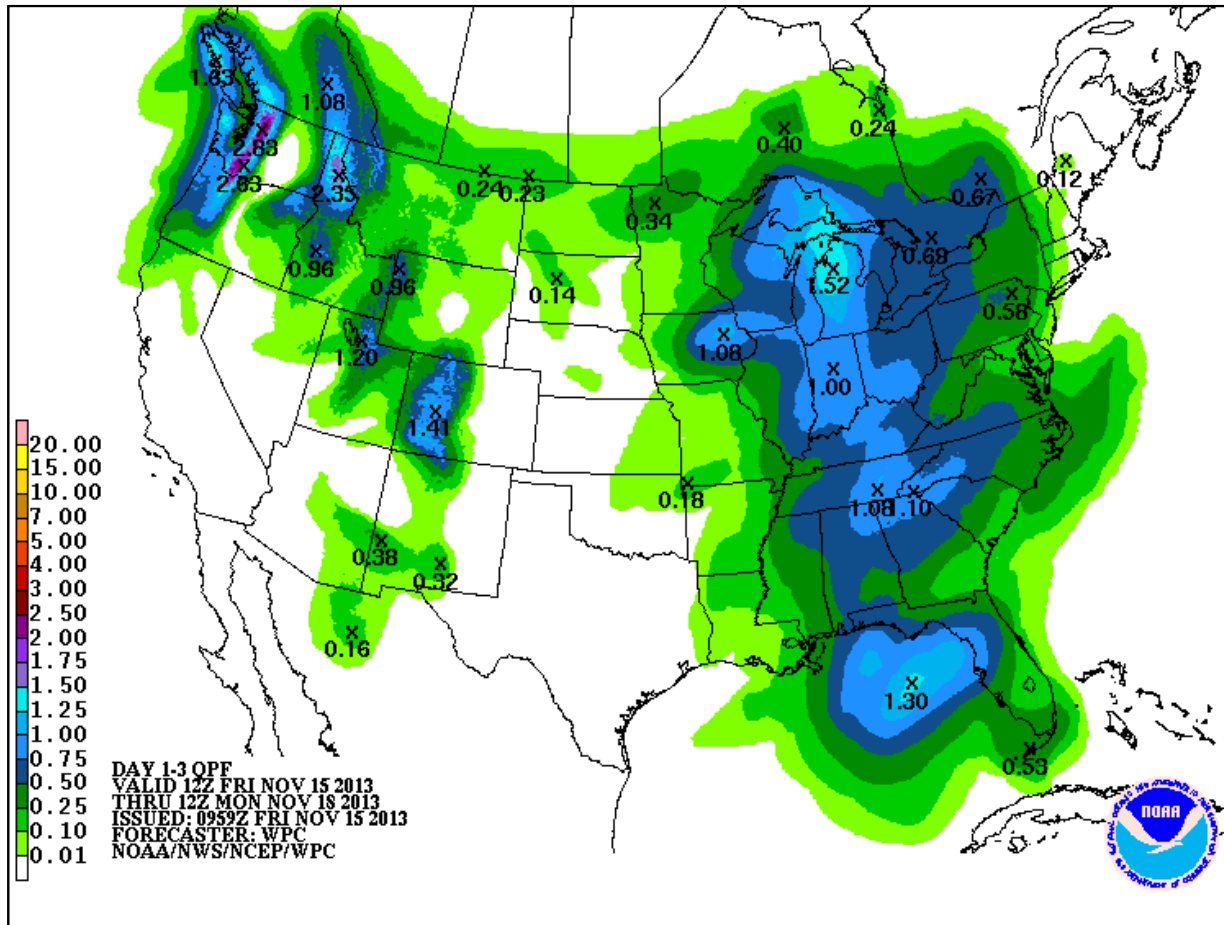
FEMA



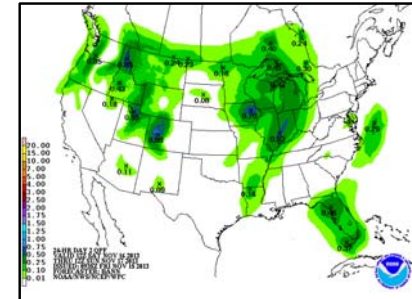


FEMA

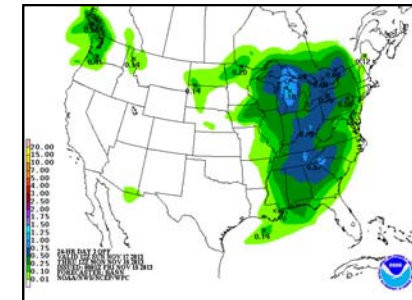
Precipitation Forecast – 3 Day



Day 1



Day 2



Day 3

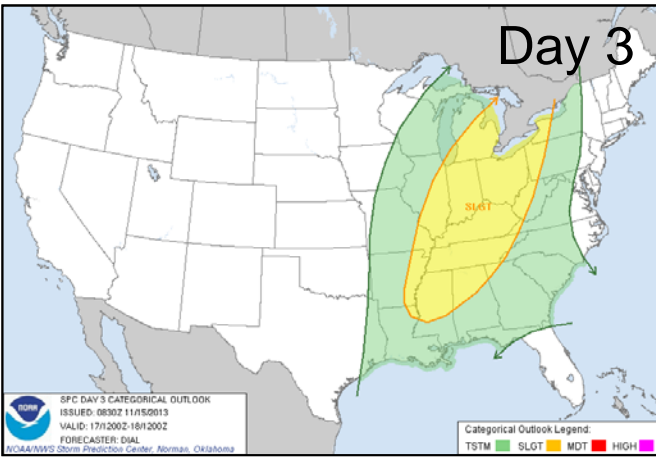
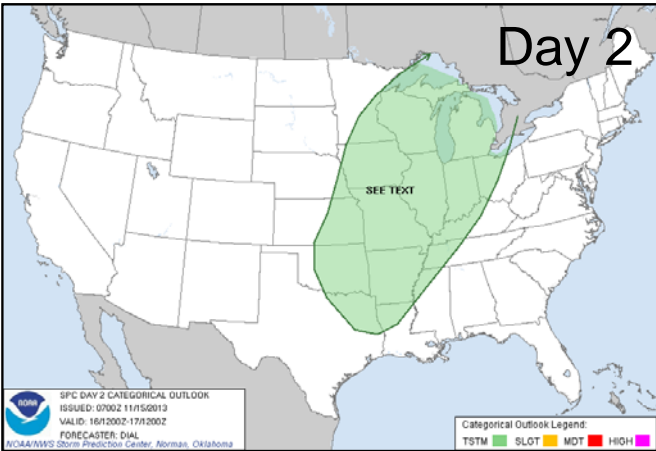
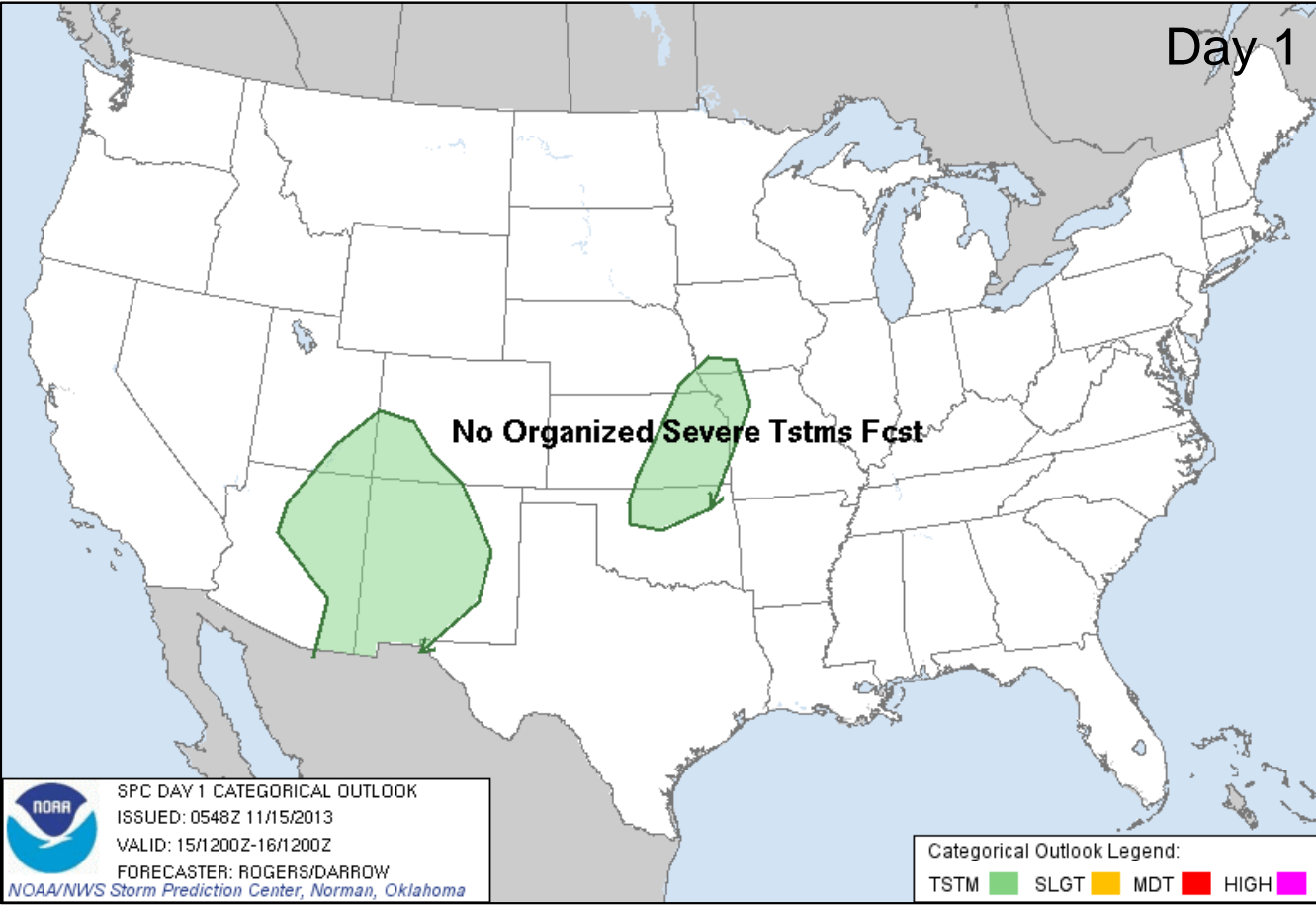
River Forecast – 7 Day



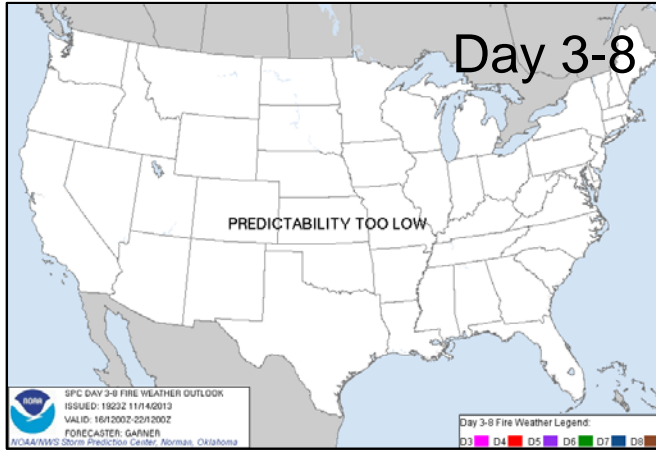
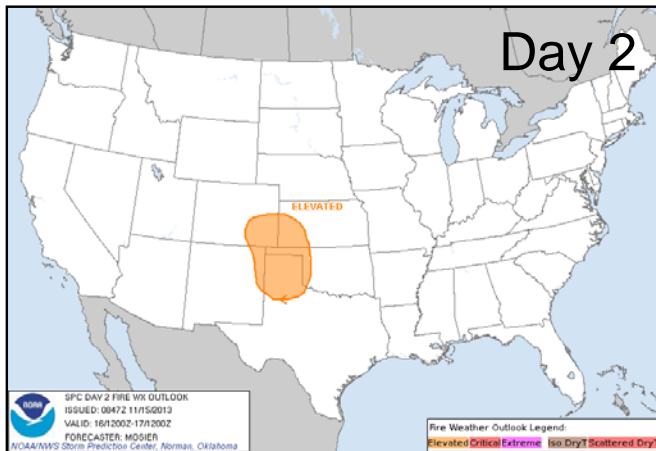
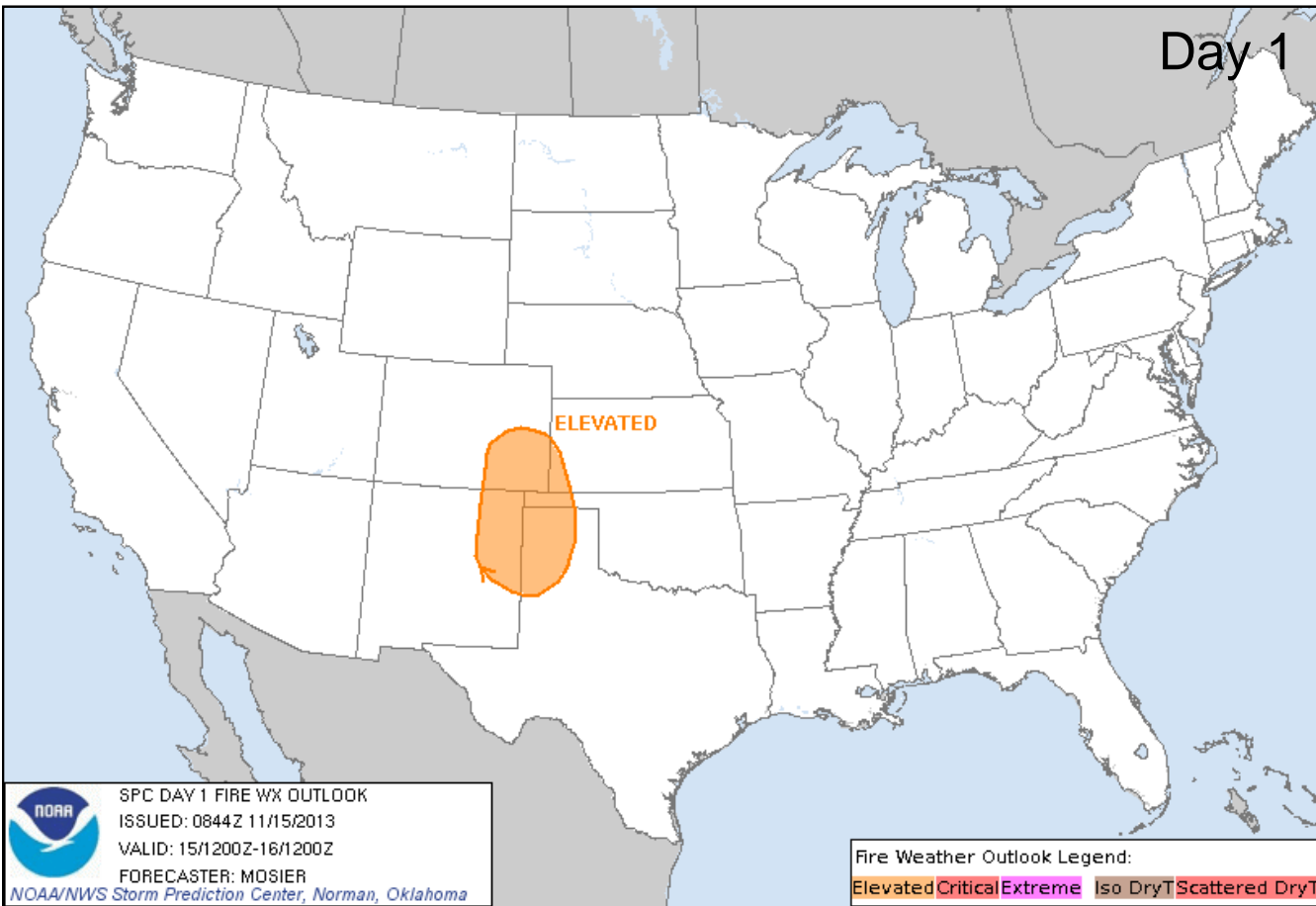
FEMA



Convective Outlooks Days 1 – 3



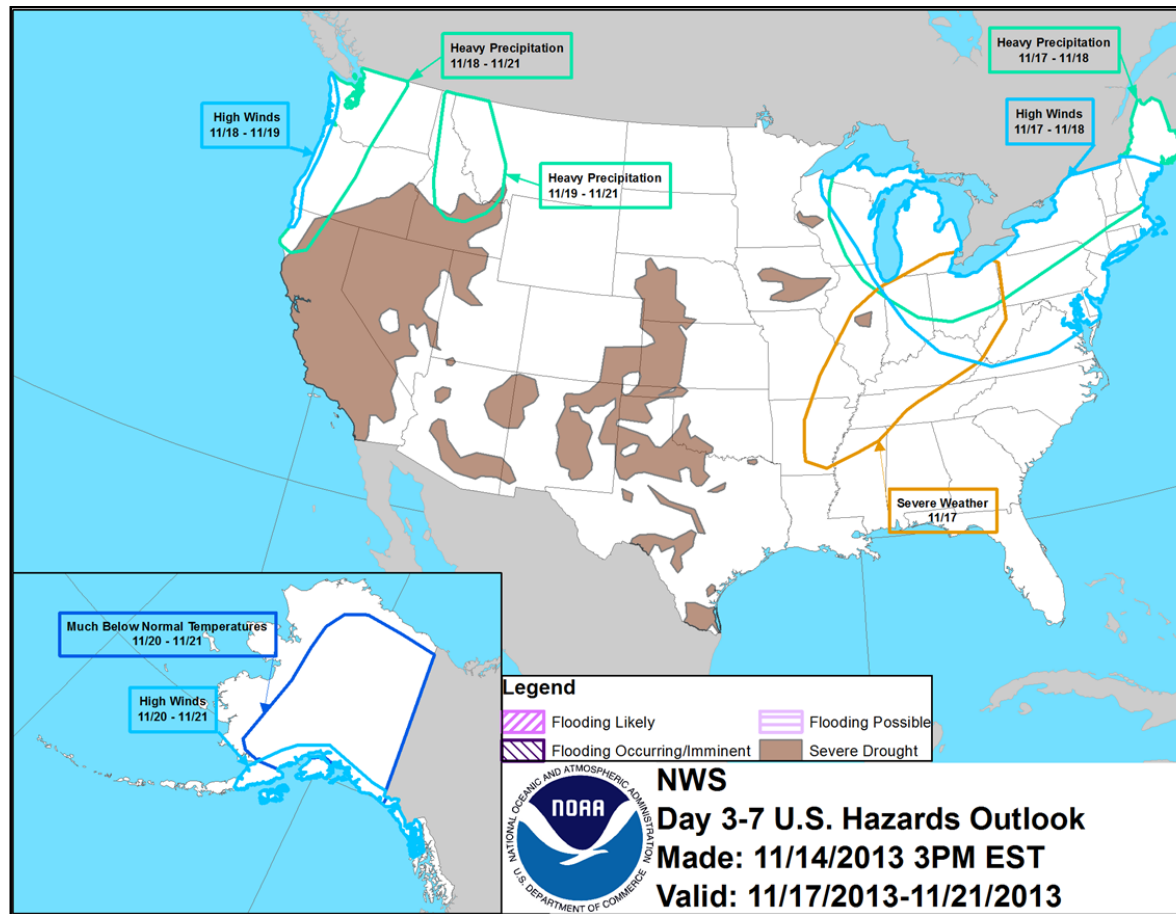
Critical Fire Weather Areas Days 1 – 8



Hazard Outlook: Nov 17 – 21



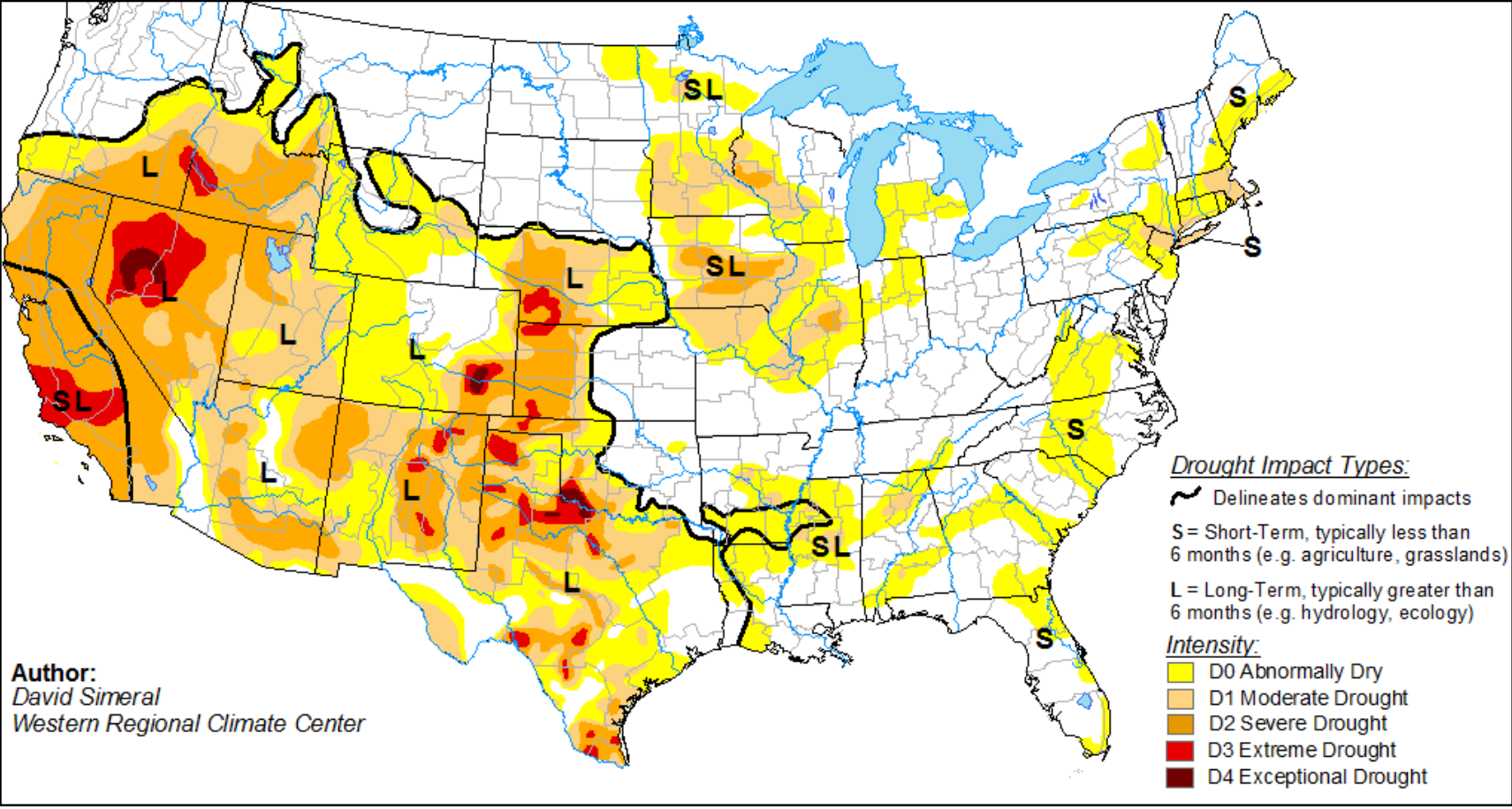
FEMA



U.S. Drought Monitor – as of November 14



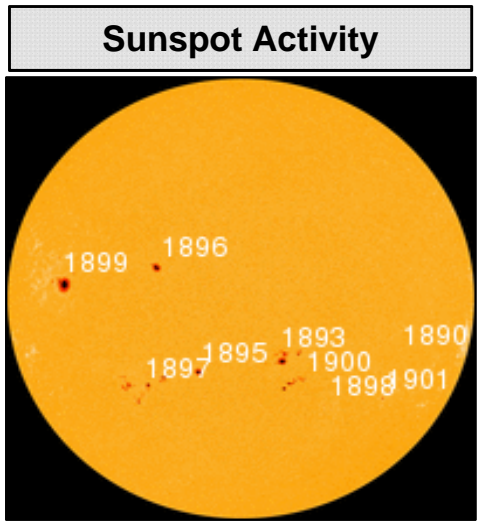
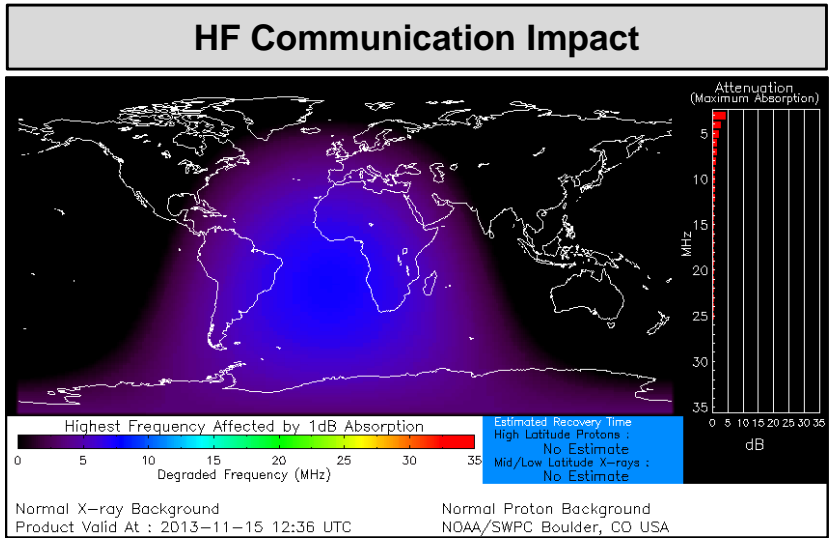
FEMA





Space Weather

NOAA Scales Activity (Range: 1/minor to 5/extreme)	Past 24 Hours	Current	Next 24 Hours
Space Weather Activity:	Minor	None	Minor
• Geomagnetic Storms	None	None	None
• Solar Radiation Storms	None	None	None
• Radio Blackouts	R1	None	R1

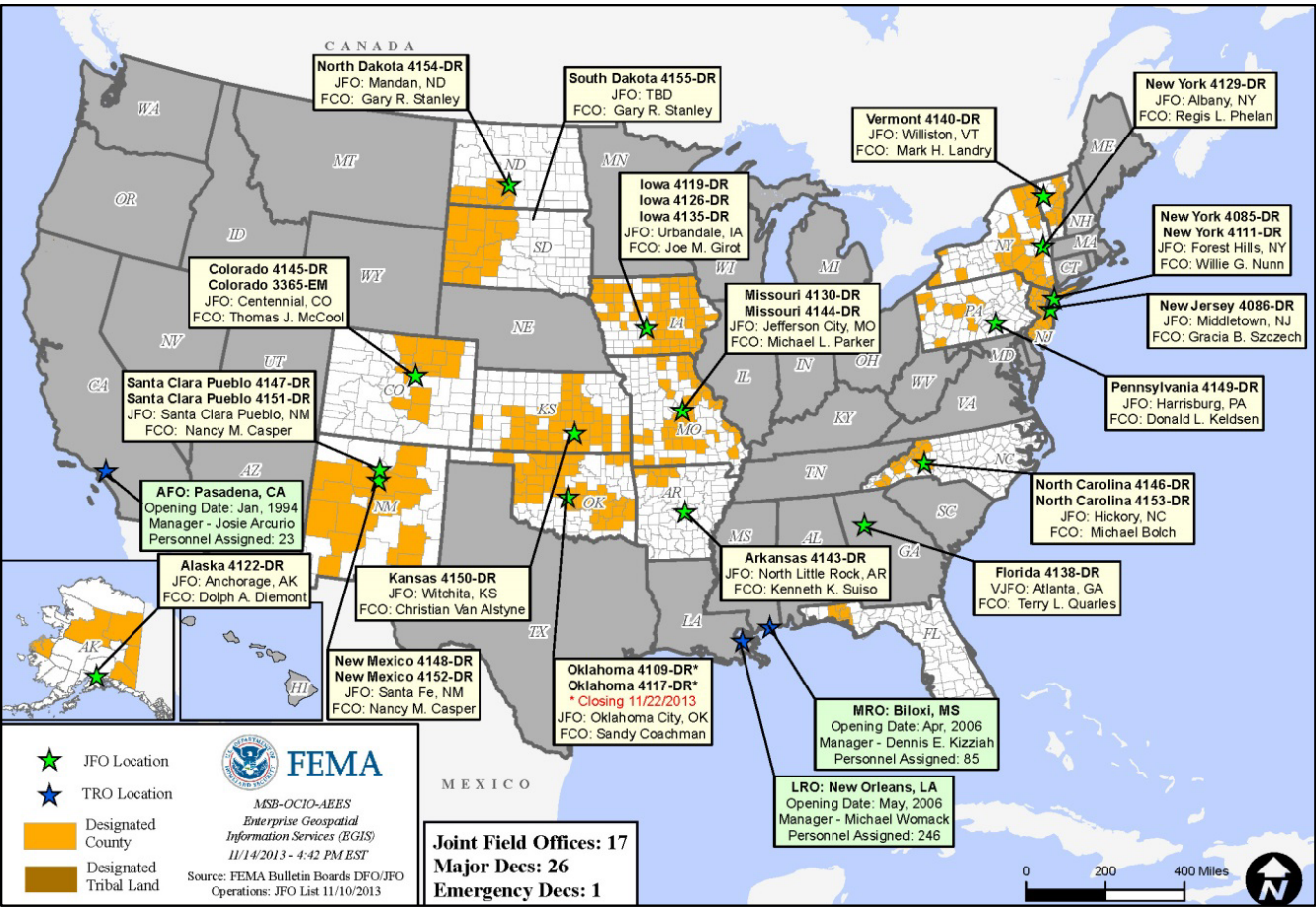


Joint Preliminary Damage Assessments



Region	State / Location	Event	IA/PA	Number of Counties		Start – End
				Requested	Complete	
IX	CA	Rim Fire PDA Follow-up	PA	1	0	11/12-11/15
X	AK	Kenai Peninsula Southern Borough Flooding October 27-28, 2013	PA	1	0	11/19-11/21

Open Field Offices as of November 15, 2013





OFDC Cadre Member Status

Federal Coordinating Officer

Total	Deployed	Detailed	Not Available	Available	Cadre Status
40	25	1	3	11	
Total Available	Type 1	Type 2	Type 3	Type 4	
11*	1	5	2	3	

* All Type 1 FCOs are available unless deployed to a Level 1 event

Federal Disaster Recovery Coordinator

Total	Deployed	Assigned	Available	Status
9	7	4	2	

As of: 11/8/2013

MCOV Fleet / Deployment Status



MCOV FLEET STATUS						MCOV DISASTER SUPPORT DEPLOYMENTS					
Location	Units Assigned	Available FMC	Deployed Committed	PMC	Unavailable	DR-State	OPCON	En Route	Unit Prep	Open Request	Notes:
MERS Maynard	3	3	0			DR-4145-CO	5				
MERS Frederick	8	8	0								
MERS Thomasville	14	13	1								
DC Ft Worth	20	16	4								
MERS Denver	2	2	0								
MERS Bothell	4	4	0								
Sacramento	4	4	0								
TOTAL	55	50	5	0	0	TOTAL	5	0	0	0	
Units in route for turn-in included in above totals.		2									

Fully Mission Capable	55
Partially Mission Capable	0
Non-Mission Capable	0
Total Not Deployed	50

Data as of: 11/14/13 @ 1500

IA Registration Statistics



IA Registrations and IHP Amounts as of November 14, 2013 @ 1500

DR/EM # - State	Registrations	Approved Applicants	Total HA Approved	Total ONA Approved	Total IHP Approved
4145 - CO	27,235	15,947	\$49,119,915	\$4,057,994	\$53,177,909
Totals	27,235	15,947	\$49,119,915	\$4,057,994	\$53,177,909
24 hour change	+88	+38	+\$277,068	+\$18,680	+\$295,748

NPSC Call Data for November 13, 2013

Total Calls Answered (Help Line + Registration Intake)	1,565
Average time to answer call	14 seconds
Maximum / Minimum time to answer a call	1 minute, 24 seconds / 8 seconds

Housing Inspection Statistics



Inspection Data as of November 14, 2013 @ 1500

DR #-State	Inspectors	Inspections Assigned	Inspections Completed	Inspection % Complete	Turnaround Time (Days)
4145 - CO	17	24,666	24,461	99.17%	2.3
TOTAL	17	24,666	24,461	99.17%	2.3
24 hour change	0	+99	+79	-0.08%	-0.0

IMAT Status



National Teams					
Team	Status	Team	Status	Team	Status
Blue/White	Available/Mission Capable	East	Assigned/Deployed (CO)	West	Available/Mission Capable
Regional Teams					
Team	Status	Team	Status	Team	Status
Region I	Available/Mission Capable	Region V	Not Mission Capable	Region VIII	Assigned/Deployed (SD)
Region II	Available/Mission Capable	Region VI-1	Available/Mission Capable	Region IX-1	Available/Mission Capable
Region III	Assigned/Deployed (PA)	Region VI-2	Assigned/Deployed (NM)	Region IX-2	Available/Mission Capable
Region IV-1	Available/Mission Capable	Region VII	Assigned/Deployed (KS)	Region X	Not Mission Capable
Region IV-2	Assigned/Deployed (NC)	Incident Management Assistance Team			

█ = Available/Mission Capable █ = Assigned/Deployed
█ = Available/Partially Mission Capable █ = Not Mission Capable

Urban Search & Rescue



FEMA

INCIDENT SUPPORT TEAMS (Red-White-Blue) – Monthly On Call Rotation											
JAN	FEB	MAR	APR	MAY	JUN	JUL	AUG	SEP	OCT	NOV	DEC
WEST				CENTRAL				EAST			
Team	Status	Team	Status	Team	Status	Team	Status				
CA-TF1	Available	AZ-TF1	Available	FL-TF1	Available						
CA-TF2	Available	CO-TF1	Available	FL-TF2	Available						
CA-TF3	Available	IN-TF1	Available	MA-TF1	Available						
CA-TF4	Available	MO-TF1	Available	MD-TF1	Available						
CA-TF5	Available	NE-TF1	Available	NY-TF1	Available						
CA-TF6	Available	NM-TF1	Conditional	PA-TF1	Available						
CA-TF7	Available	NV-TF1	Conditional	VA-TF1	Available						
CA-TF8	Available	TN-TF1	Available	VA-TF2	Available						
WA-TF1	Available	TX-TF1	Available	OH-TF1	Available						
		UT-TF1	Available								

= Available/Mission Capable
 = Available/Partially Mission Capable

= Assigned/Deployed
 = Out-of-Service

RRCC / Regional Watch Center Status



Region	RRCC	Regional Watch Center
I	Not Activated	Maynard MOC (24/7)
II	Not Activated	24/7
III	Not Activated	24/7
IV	Not Activated	24/7
V	Not Activated	24/7
VI	Not Activated	Denton MOC (24/7)
VII	Not Activated	24/7
VIII	Not Activated	Denver MOC (24/7)
IX	Not Activated	24/7
X	Not Activated	Bothell MOC (24/7)

■ = Not Mission Capable

■ = Available/Partially Mission Capable

■ = Available/Mission Capable

National Team Status



Team/Status	Current Location	Remarks
National Watch Center	Washington, DC	Steady State
NRCC	Washington, DC	Not Activated
HLT	Miami, FL	Activated
DEST	Washington, DC	Not Activated
Mission Capable	Partially Mission Capable	Not Mission Capable



FEMA

FEMA's mission is to support our citizens and first responders to ensure that as a nation we work together to build, sustain, and improve our capability to prepare for, protect against, respond to, recover from, and mitigate all hazards.