



# **FEMA**

## **Daily Operations Briefing**

**Tuesday, November 12, 2013**

**8:30 a.m. EST**

# Significant Activity: Nov 8 - 12



## **Significant Events:**

- Recovery – Super Typhoon 31W (Yolanda/Haiyan)
- GOCE Satellite Re-entry - Final

## **Tropical Activity:**

- Atlantic/Eastern Pacific – No tropical cyclone activity expected next 48 hours
- Central Pacific – No tropical cyclones expected through Wednesday night
- Western Pacific – No activity expected to impact U.S. Territories

## **Significant Weather:**

- Rain & higher elevation snow – Pacific Northwest
- Rain – Southern Plains to Mid-Atlantic
- Wintry mix – Tennessee & Upper Mississippi valleys into Mid-Atlantic
- Much below normal temperatures – Central U.S. to Mid- Atlantic into Northeast
- Critical Fire Weather Areas – None
- Elevated Fire Weather Area – southern California
- Space Weather – Past 24 hours: none; next 24 hours: Minor (R1) radio blackouts likely

**Earthquake Activity:** International M6.6 – Offshore Kamchatka, Russia

**Declaration Activity:** Major Disaster Declaration – South Dakota

# Atlantic – Tropical Outlook



FEMA



# Eastern Pacific – Tropical Outlook



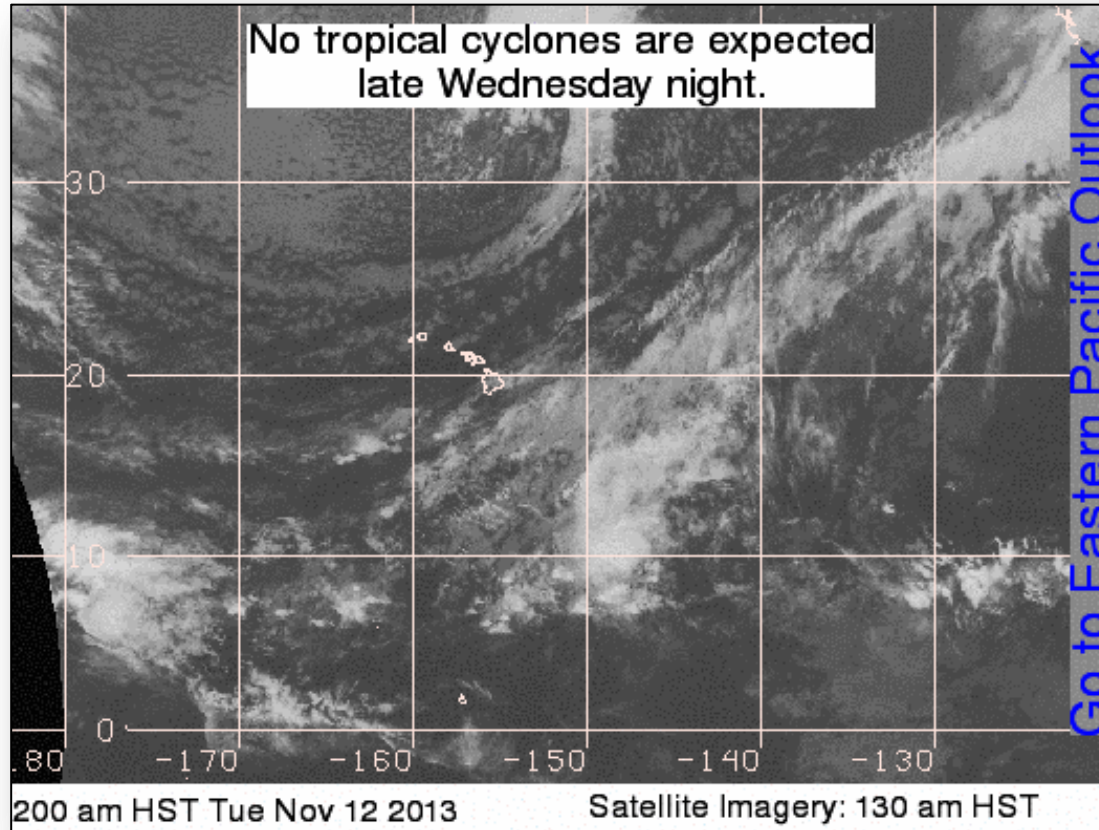
FEMA



# Central Pacific – Tropical Outlook



FEMA

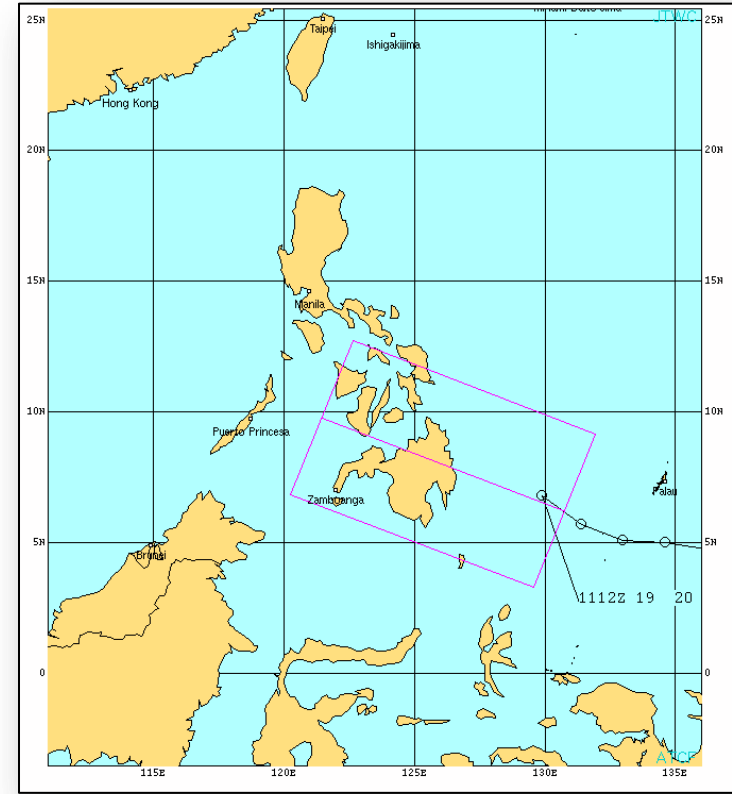


# Western Pacific –

## Tropical Cyclone Formation Alert (TCFA WTPN 21)

As of 12:00 p.m. EST Nov 11, 2013

- Area of convection 544 miles E of Zamboanga, Philippines
- Moving NW at 22 mph
- Maximum sustained winds of 20 to 26 mph
- Potential for development of a significant tropical cyclone within the next 24 hours remains high





# Typhoon 31 W (Yolanda/Haiyan)

**Source: State Dept. Interagency Conference Call 7 p.m. EST 11 Nov**

*Philippines (Nov 7-8; winds of 195 mph, gusting to 235 mph):*

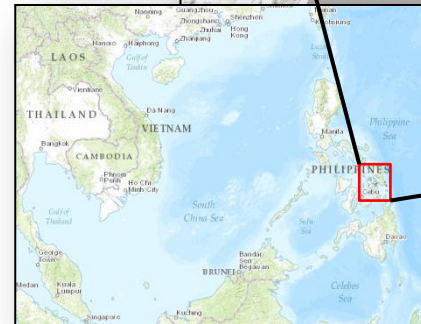
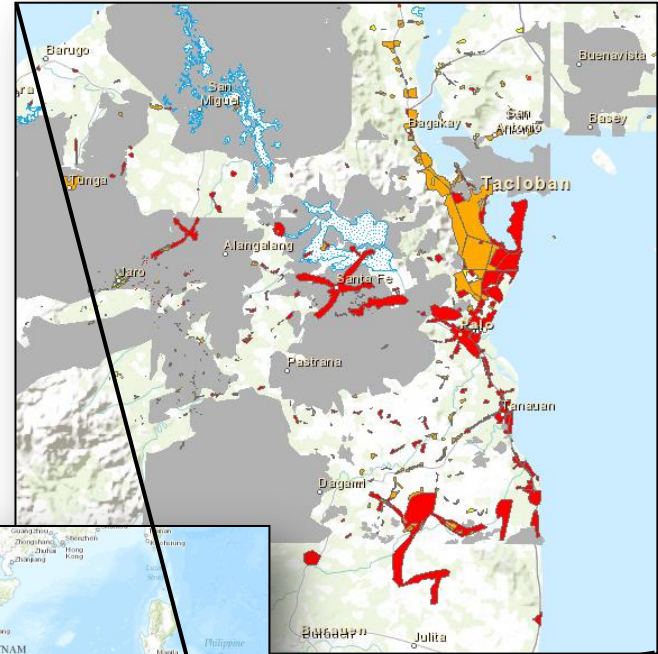
- Central Samar & Leyte hardest hit – especially coastal areas
- Estimate 33 ft. storm surge moved 1-2 miles inland
- Devastation in Tacloban (pop 221,000) on Leyte is almost total - buildings are 98% destroyed
- Preliminary reports of 1,774 confirmed fatalities, 2,487 injured, 82 missing, 600K displaced
- Widespread power, water, communications, & sanitation outages
- Anticipate a 6 month recovery effort
- Road access to Tacloban has been restored

*Vietnam (Nov 9-12 ,winds of 75 mph, gusting to 95 mph):*

- Ten fatalities, 67 injured & 40,000 displaced
- Hundreds of homes damaged/destroyed

*China (Nov 10-11, heavy rainfall in province of Hainan):*

- Eight fatalities & 40,000 displaced
- Six missing in maritime incidents



Leyte & Samar, Philippines

 = Hardest hit areas

Philippines & Vietnam

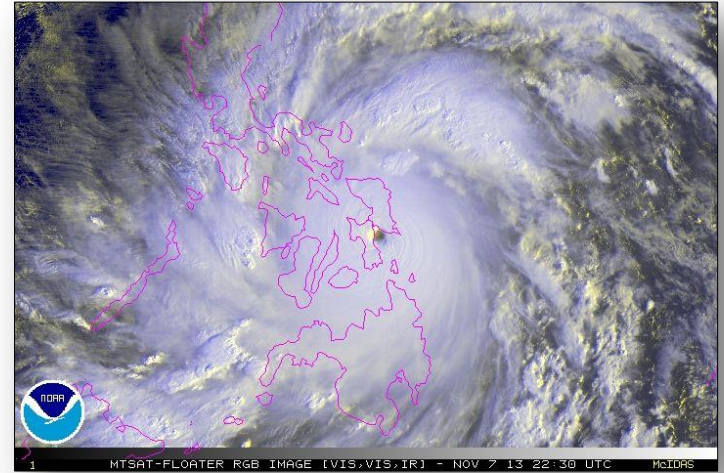
# Typhoon 31W (Yolanda/Haiyan)

## U.S. Response

- USAID/OFDA has lead in U.S. response
  - Response Management Team (RMT) established in DC
  - Disaster Assistance Response Team (DART) in Manila, Samar & Leyte coordinating the US response
  - Priorities are food, water, logistics, coordination, shelter
- USMC airlift started & night operations possible tonight
- U.S. Carrier Group en route (routine); expected in 48 to 72 hours
  - If requested, able to provide humanitarian aid, supplies & medical care
- No request for FEMA assistance

## USAID Conference Participants

- State Department, PACOM, HHS, DOT, DHS, NORTHCOM, USPACOM, JTWC, US Embassy Manila, CDC, and others





# GOCE Satellite Re-entry - Final

- European Space Agency's (ESA's) Gravity Field & Steady-State Ocean Explorer (GOCE) satellite re-entry
- GOCE re-entered earth around 7:16 p.m. EST Sunday, Nov 10
  - Disintegrated in the upper atmosphere over the south Atlantic
  - No impact to U.S. & no large fragments observed
  - No damage or injuries reported

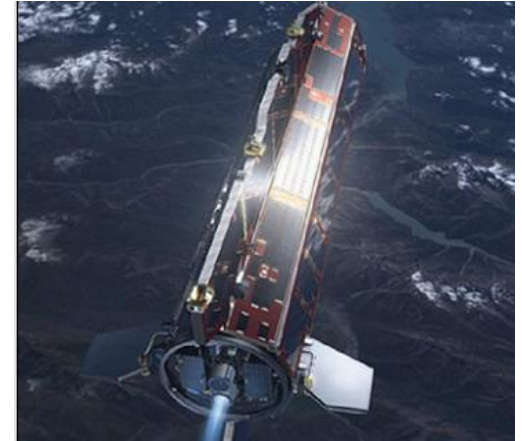
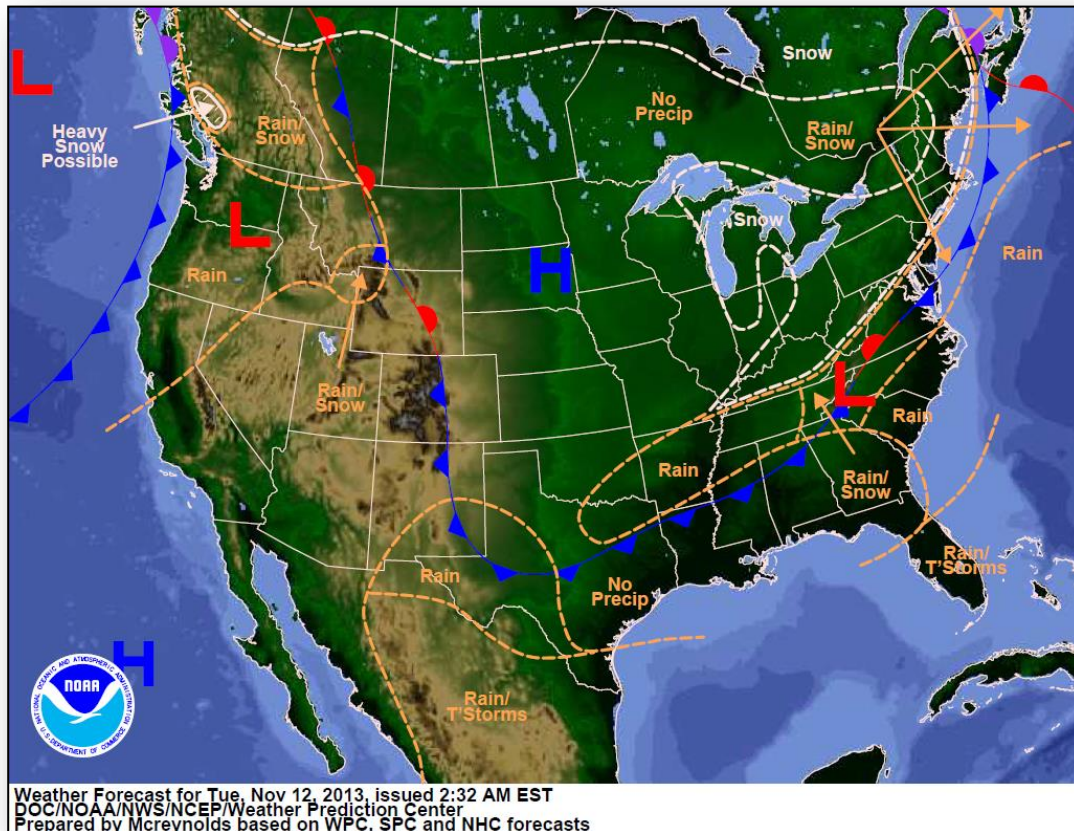


Photo credit: NASA

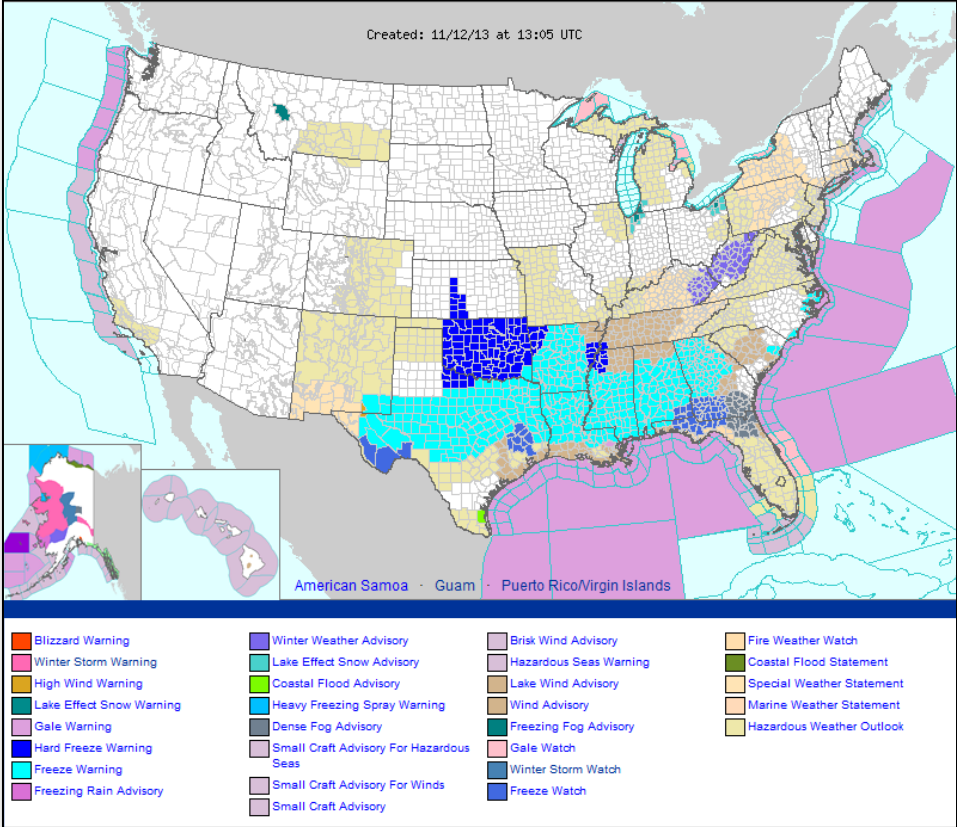
# National Weather Forecast



FEMA



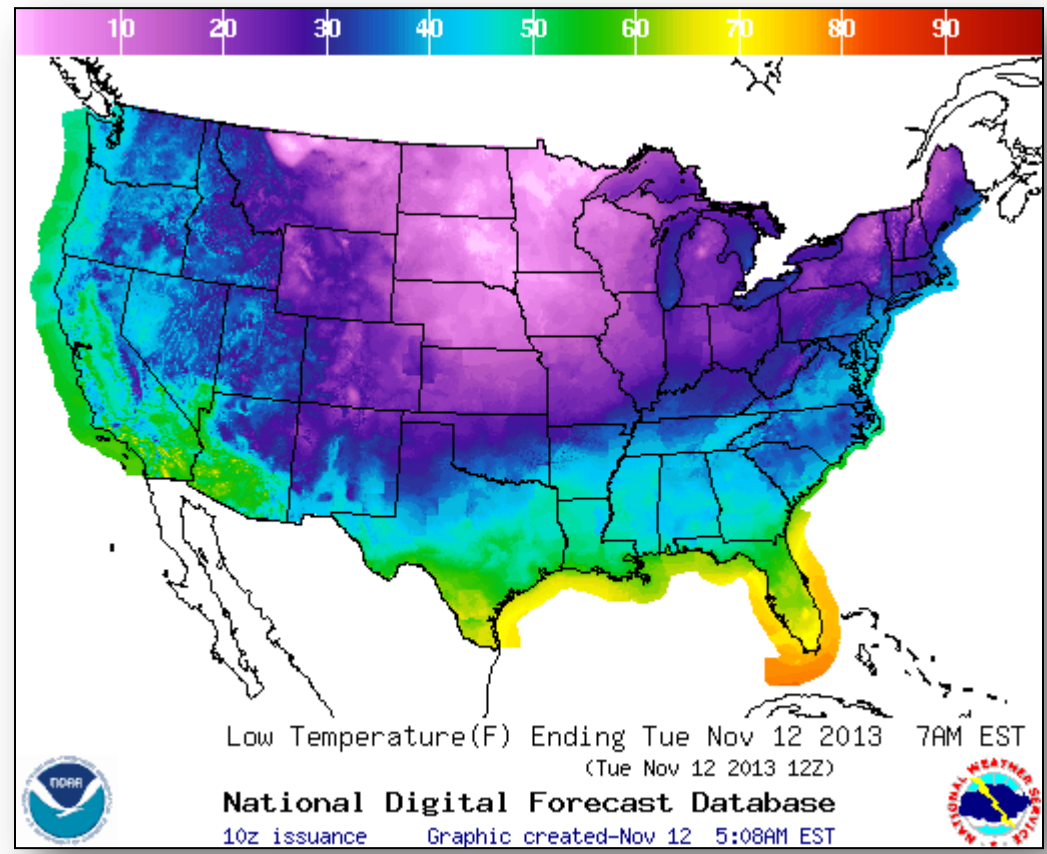
# Active Watches/Warnings



# Low Temperatures



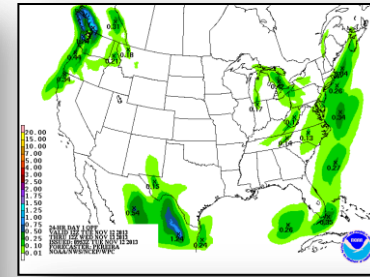
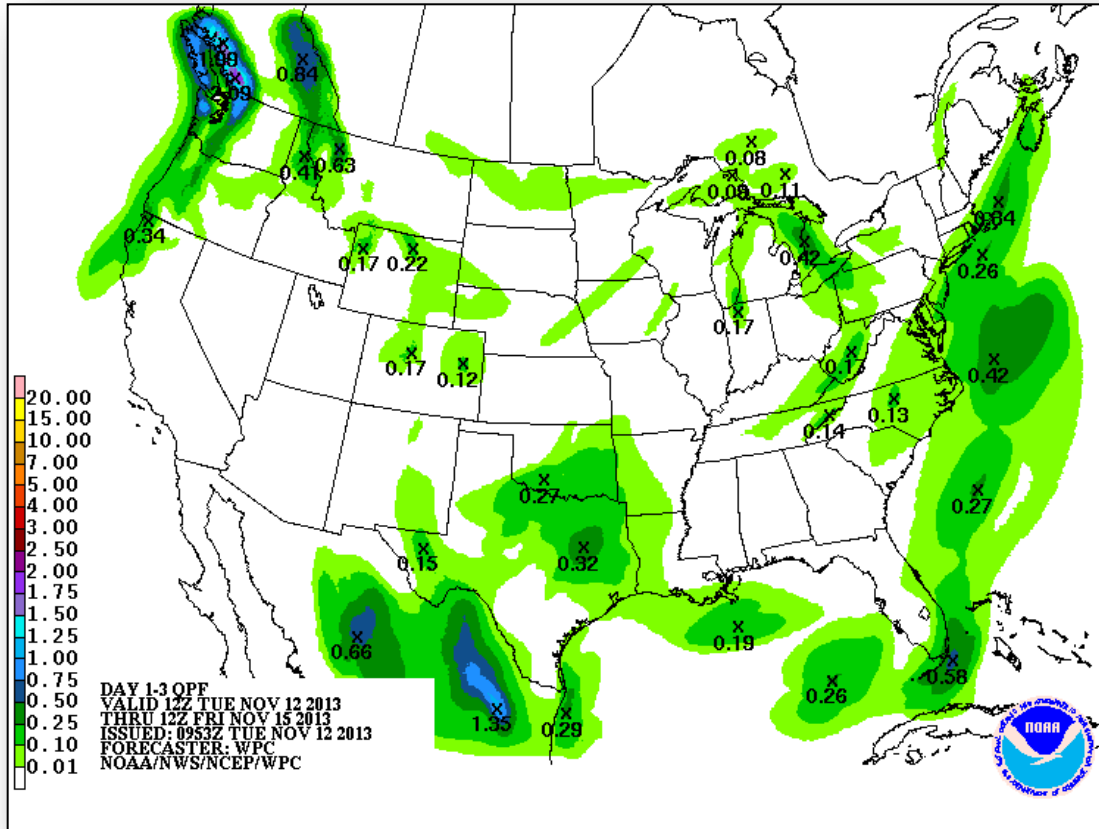
FEMA



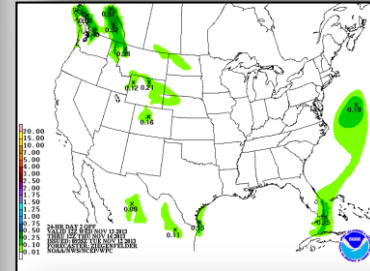
# Precipitation Forecast – 3 Day



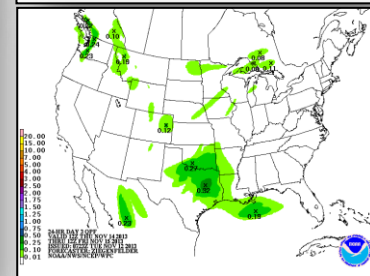
FEMA



Day 1



Day 2



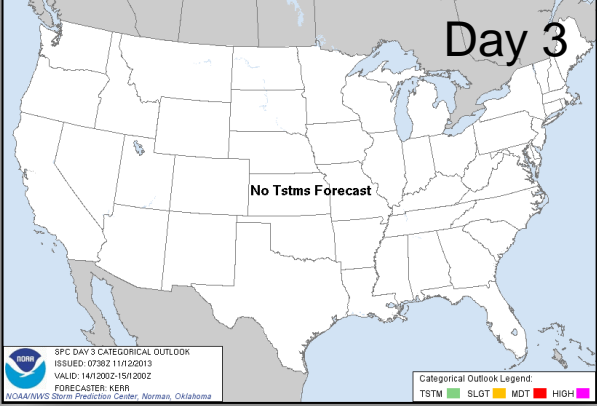
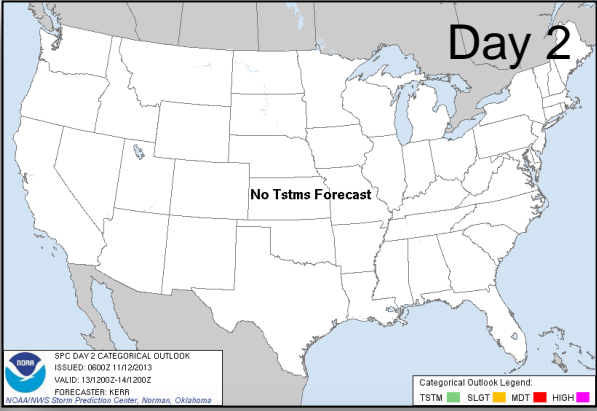
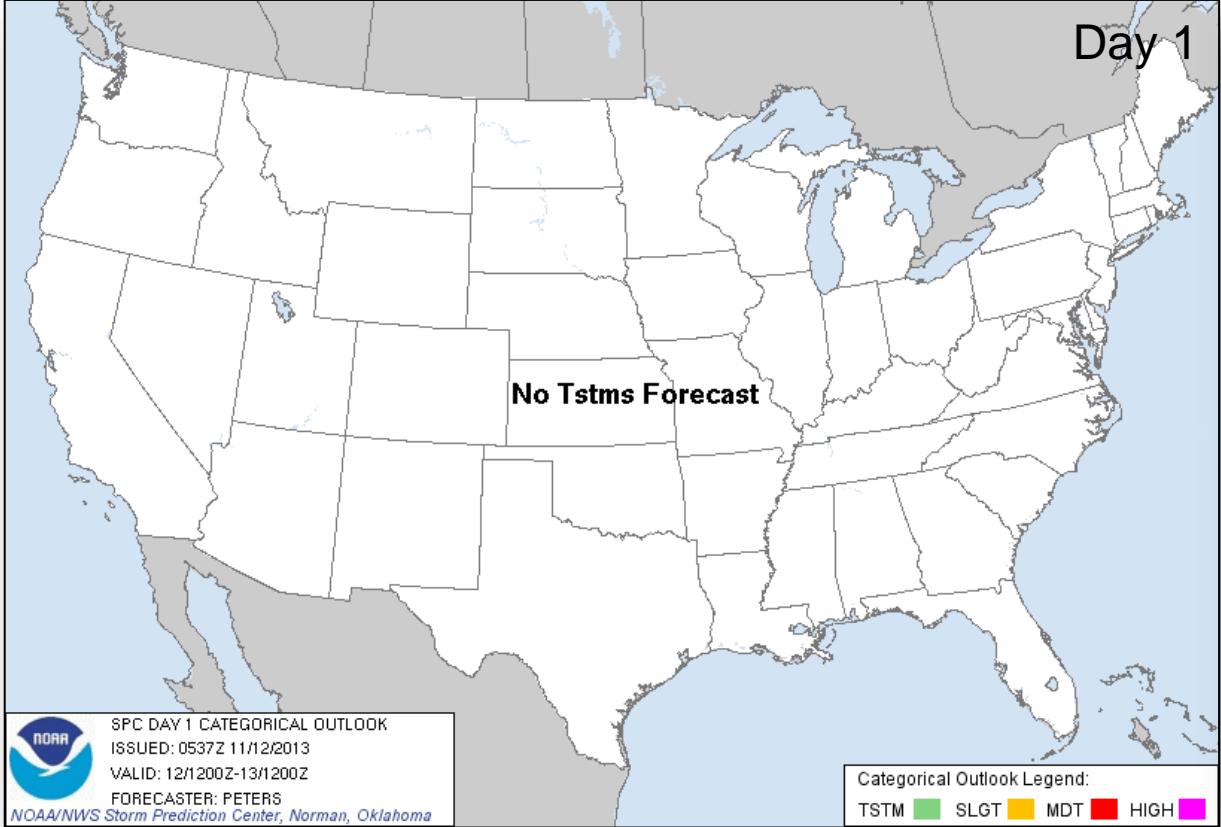
Day 3



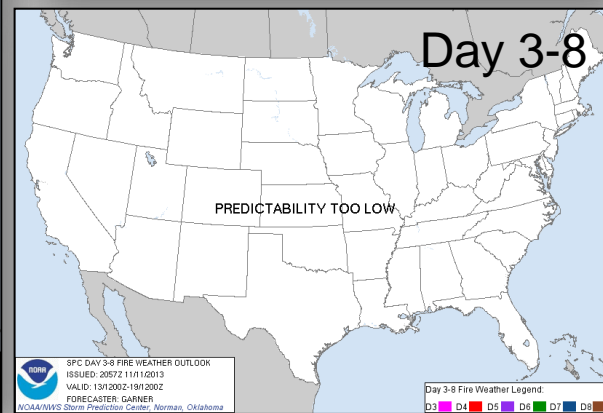
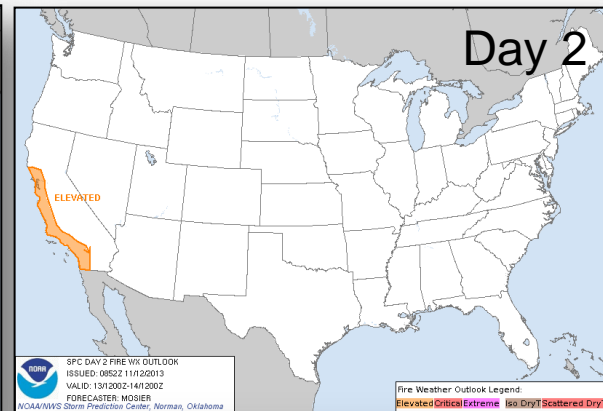
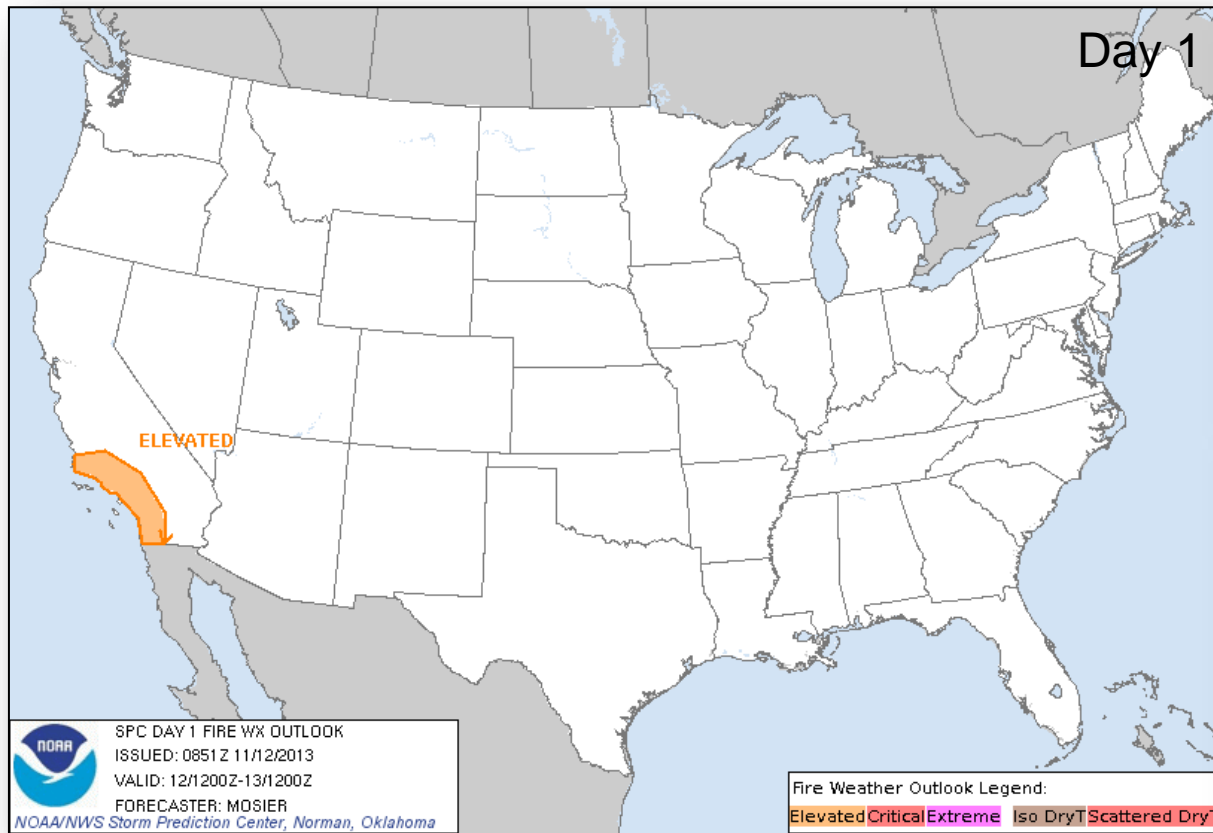
# River Forecast – 7 Day



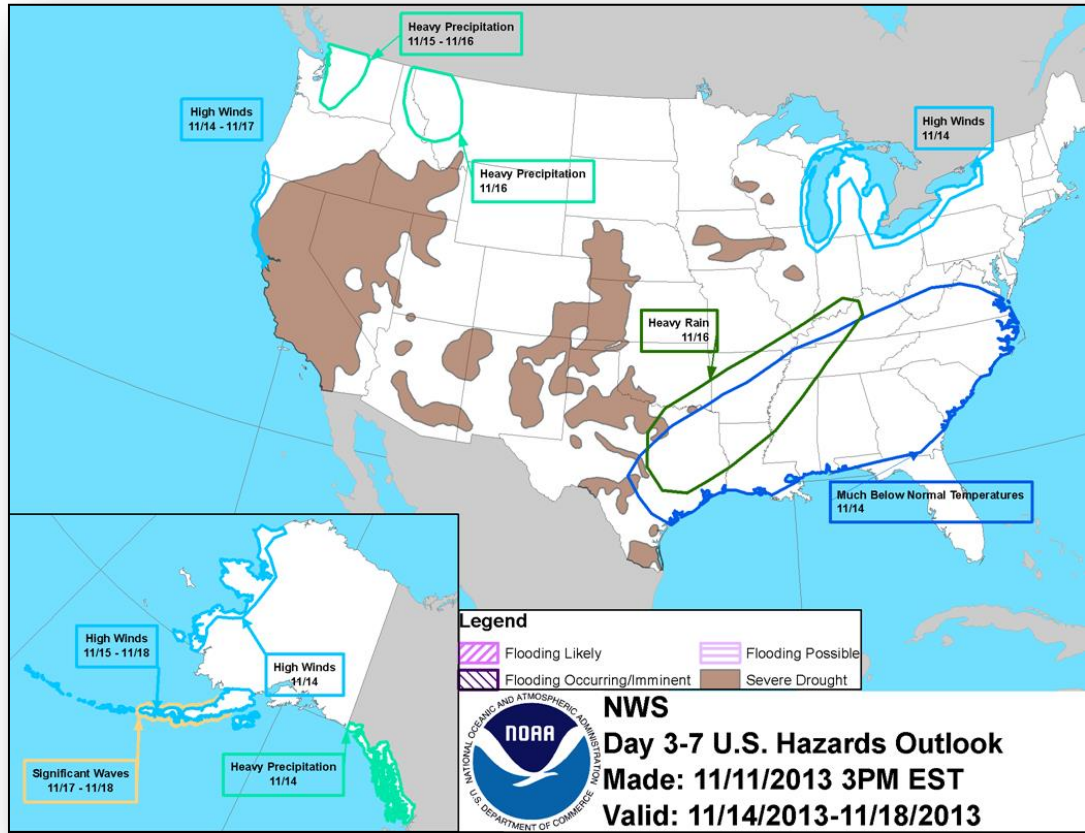
# Convective Outlooks Days 1 – 3



# Critical Fire Weather Areas Days 1 – 8



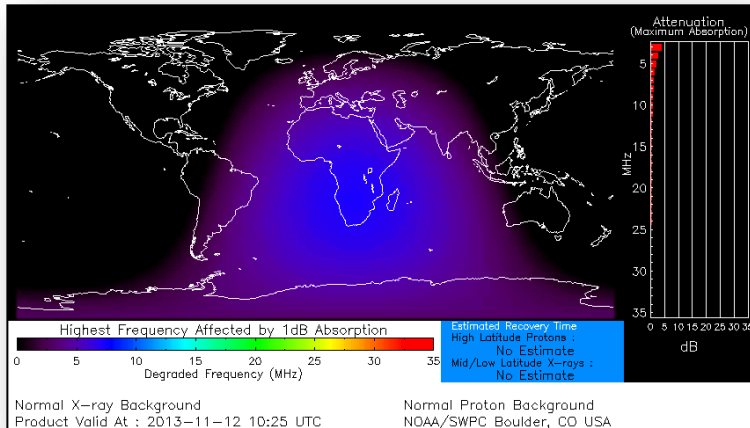
# Hazard Outlook: Nov 11 - 15



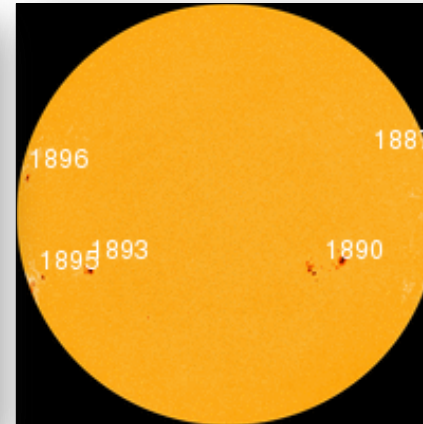
# Space Weather

NOAA Scales Activity (Range: 1/minor to 5/extreme)	Past 24 Hours	Current	Next 24 Hours
Space Weather Activity:	None	None	Minor
• Geomagnetic Storms	None	None	None
• Solar Radiation Storms	None	None	None
• Radio Blackouts	None	None	R1

## HF Communication Impact



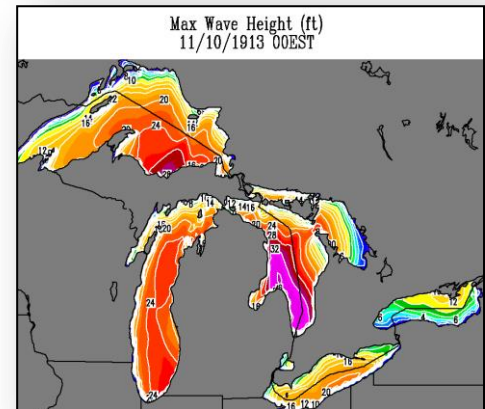
## Sunspot Activity



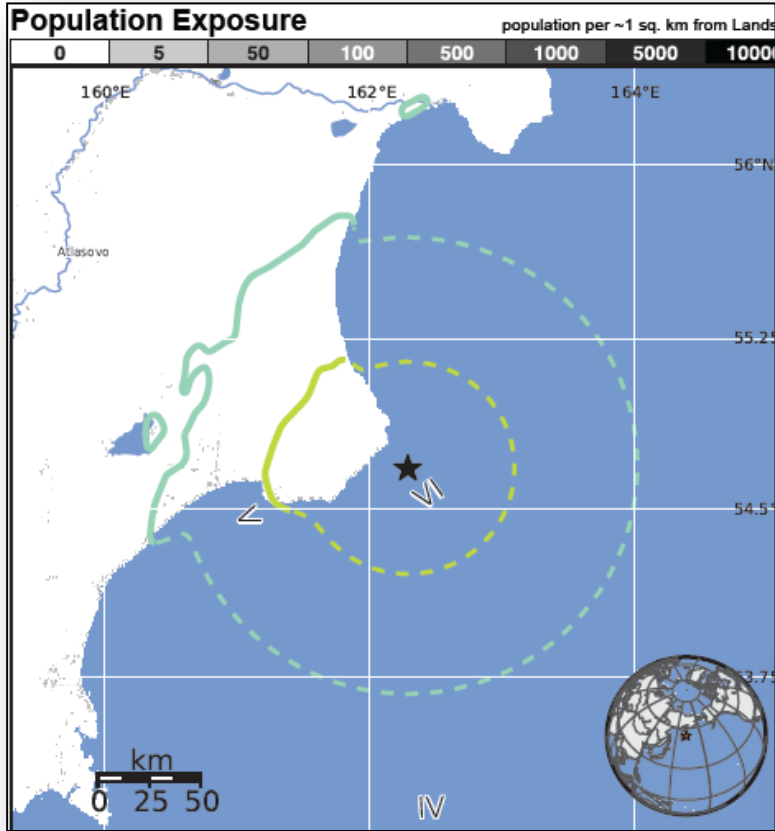


# Great Lakes Storm of 1913 Centennial

- November 1913 a massive storm produced whiteout blizzard conditions & hurricane force winds
- Storm lasted 4 days with 90 mph winds & waves reaching 35 feet
- The “White Hurricane” remains the most devastating natural disaster to ever strike the region with a dozen major shipwrecks
- Estimated 250 lives lost, & more than \$5 million in damages (\$117 million today)
- Modern systems of shipping communication, weather prediction, & storm preparedness have all been fundamentally shaped by this event
- NOAA commemorating “White Hurricane” of 1913 for role it plays in history of Great Lakes



# International Earthquake Activity – Russia



## M 6.6 – Kamchatka, Russia

- Occurred at 2:03 am EST on November 12, 2013
  - 106 miles S of Ust-Kamchatsk Staryy, Russia
- Depth of 29 miles
- USGS issued a GREEN PAGER alert indicating:
  - Low likelihood of casualties & damage
  - Approx. 15k residents exposed to weak/light shaking
- No tsunami generated
- No damages or fatalities reported
- No requests for international assistance from Russia

ESTIMATED POPULATION EXPOSURE (k = x1000)	--*	--*	13k*	2k	0	0	0	0	0
ESTIMATED MODIFIED MERCALLI INTENSITY	I	II-III	IV	V	VI	VII	VIII	IX	X+
PERCEIVED SHAKING	Not felt	Weak	Light	Moderate	Strong	Very Strong	Severe	Violent	Extreme
POTENTIAL DAMAGE	Resistant Structures	none	none	V. Light	Light	Moderate	Moderate/Heavy	Heavy	V. Heavy
	Vulnerable Structures	none	none	Light	Moderate	Moderate/Heavy	Heavy	V. Heavy	V. Heavy

# Disaster Requests & Declarations



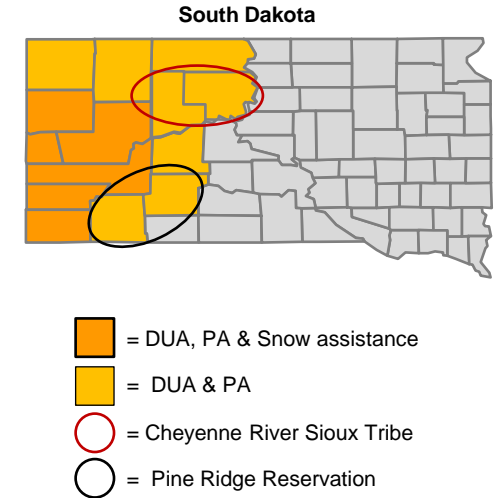
Declaration Requests in Process		Requests APPROVED (since last report)	Requests DENIED (since last report)
0	Date Requested	1	0
SD – DR Severe Winter Storm, Snowstorm, and Flooding	October 31, 2013	Declared November 8, 2013	

# Major Disaster Declaration – South Dakota



## FEMA-4155-DR-SD

- Major Disaster Declaration approved November 8, 2013 for State of South Dakota
- For severe winter storm, snowstorm & flooding that occurred October 3-16, 2013
- Provides:
  - Disaster Unemployment Assistance and Public Assistance for 14 counties, the Cheyenne River Sioux Tribe of the Cheyenne River Reservation and the Oglala Sioux Tribe
  - Snow assistance for 6 counties
  - Hazard Mitigation for all counties and tribes statewide
- FCO is Gary R Stanley



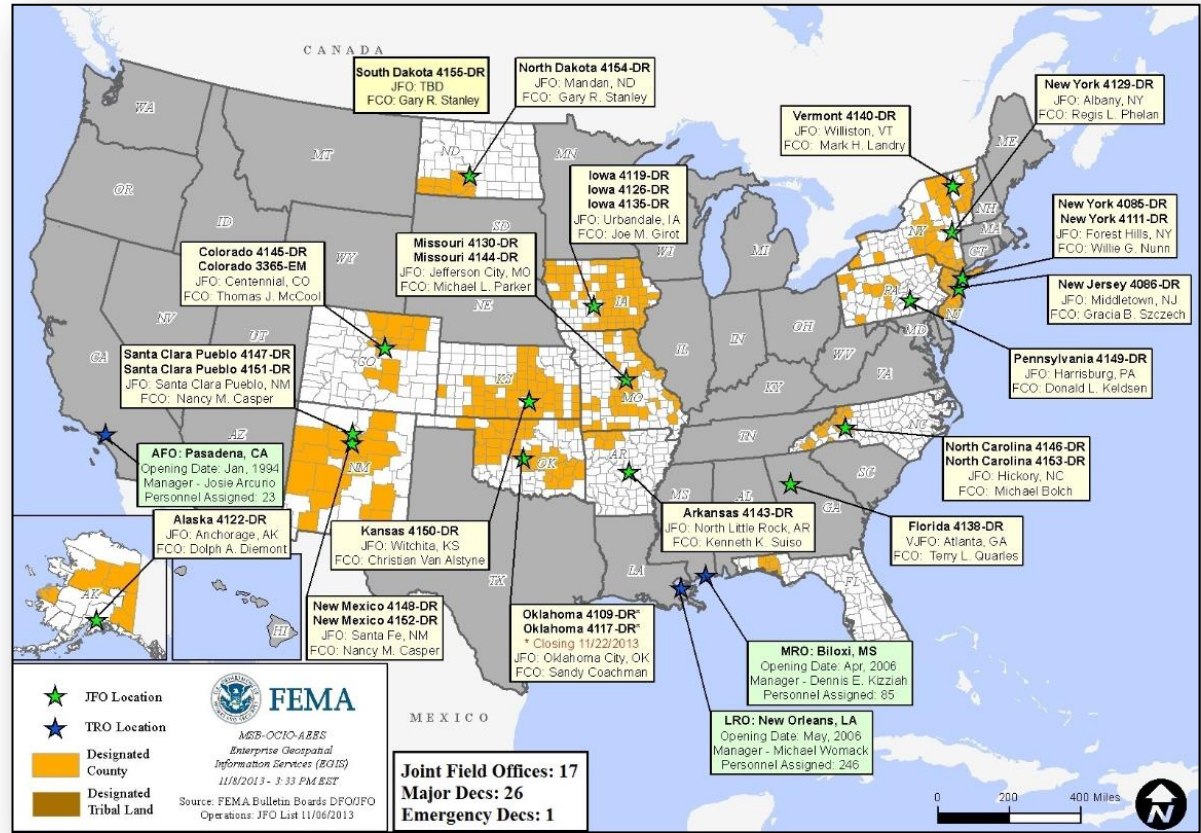
# Joint Preliminary Damage Assessments



Region	State / Location	Event	IA/PA	Number of Counties		Start – End
				Requested	Complete	
VI	TX	Severe Storms and Flooding October 30-31, 2013	IA	6	6	11/8 – 11/10



# Open Field Offices as of November 12, 2013



# OFDC Cadre Member Status



## Federal Coordinating Officer

Total	Deployed	Detailed	Not Available	Available	Cadre Status
40	25	1	3	11	
Total Available	Type 1	Type 2	Type 3	Type 4	
11*	1	5	2	3	

\* All Type 1 FCOs are available unless deployed to a Level 1 event

## Federal Disaster Recovery Coordinator

Total	Deployed	Assigned	Available	Status
9	7	4	2	

As of: 11/8/2013

# MCOV Fleet / Deployment Status



MCOV FLEET STATUS						MCOV DISASTER SUPPORT DEPLOYMENTS					
Location	Units Assigned	Available FMC	Deployed Committed	PMC	Unavailable	DR-State	OPCON	En Route	Unit Prep	Open Request	Notes:
MERS Maynard	3	3	0			DR-4145-CO	7				
MERS Frederick	8	8	0								
MERS Thomasville	14	13	1								
DC Ft Worth	20	14	6								
MERS Denver	2	2	0								
MERS Bothell	4	4	0								
Sacramento	4	4	0								
<b>TOTAL</b>	<b>55</b>	<b>48</b>	<b>7</b>	<b>0</b>	<b>0</b>	<b>TOTAL</b>	<b>7</b>	<b>0</b>	<b>0</b>	<b>0</b>	
Units in route for turn-in included in above totals.		1									

Fully Mission Capable	<b>55</b>
Partially Mission Capable	0
Non-Mission Capable	0
<b>Total Not Deployed</b>	<b>48</b>

Data as of: 11/11/13 @ 1500

# IA Registration Statistics



## IA Registrations and IHP Amounts as of November 11, 2013 @ 1500

DR/EM # - State	Registrations	Approved Applicants	Total HA Approved	Total ONA Approved	Total IHP Approved
4145 - CO	26,987	15,842	\$48,355,436	\$3,986,950	\$52,342,385
<b>Totals</b>	<b>26,987</b>	<b>15,842</b>	<b>\$48,355,436</b>	<b>\$3,986,950</b>	<b>\$52,342,385</b>
72 hour change	+135	+88	+\$186,964	+\$24,851	+\$211,815

## NPSC Call Data for November 10, 2013

Total Calls Answered (Help Line + Registration Intake)	227
Average time to answer call	12 seconds
Maximum / Minimum time to answer a call	19 seconds / 10 seconds

# Housing Inspection Statistics



## Inspection Data as of November 11, 2013 @ 1500

DR #-State	Inspectors	Inspections Assigned	Inspections Completed	Inspection % Complete	Turnaround Time (Days)
4145 - CO	17	24,396	24,234	99.34%	2.3
TOTAL	17	24,396	24,234	99.34%	2.3
72 hour change	-1	+142	+193	+0.21%	+0.0

# IMAT Status



National Teams					
Team	Status	Team	Status	Team	Status
Blue/White	Available/Mission Capable	East	Assigned/Deployed (CO)	West	Available/Mission Capable
Regional Teams					
Team	Status	Team	Status	Team	Status
Region I	Available/Mission Capable	Region V	Not Mission Capable	Region VIII	Assigned/Deployed (SD)
Region II	Available/Mission Capable	Region VI-1	Available/Mission Capable	Region IX-1	Available/Mission Capable
Region III	Assigned/Deployed (PA)	Region VI-2	Assigned/Deployed (NM)	Region IX-2	Available/Mission Capable
Region IV-1	Available/Mission Capable	Region VII	Assigned/Deployed (KS)	Region X	Not Mission Capable
Region IV-2	Assigned/Deployed (NC)	Incident Management Assistance Team			

= Available/Mission Capable     
  = Assigned/Deployed  
 = Available/Partially Mission Capable     
  = Not Mission Capable



# Urban Search & Rescue



INCIDENT SUPPORT TEAMS (Red-White-Blue) – Monthly On Call Rotation											
JAN	FEB	MAR	APR	MAY	JUN	JUL	AUG	SEP	OCT	NOV	DEC
WEST				CENTRAL				EAST			
Team	Status	Team	Status	Team	Status	Team	Status	Team	Status	Team	Status
CA-TF1	Available	AZ-TF1	Available	FL-TF1	Available	FL-TF1	Available	FL-TF2	Available	FL-TF2	Available
CA-TF2	Available	CO-TF1	Available	FL-TF2	Available	MA-TF1	Available	MA-TF1	Available	MA-TF1	Available
CA-TF3	Available	IN-TF1	Available	MO-TF1	Available	MD-TF1	Available	MD-TF1	Available	MD-TF1	Available
CA-TF4	Available	MO-TF1	Available	NE-TF1	Available	NY-TF1	Available	NY-TF1	Available	NY-TF1	Available
CA-TF5	Available	NE-TF1	Available	NM-TF1	Conditional	PA-TF1	Available	PA-TF1	Available	PA-TF1	Available
CA-TF6	Available	NM-TF1	Conditional	NV-TF1	Conditional	VA-TF1	Available	VA-TF1	Available	VA-TF1	Available
CA-TF7	Available	NV-TF1	Conditional	TN-TF1	Available	VA-TF2	Available	VA-TF2	Available	VA-TF2	Available
CA-TF8	Available	TN-TF1	Available	TX-TF1	Available	OH-TF1	Available	OH-TF1	Available	OH-TF1	Available
WA-TF1	Available	TX-TF1	Available	UT-TF1	Available						
		UT-TF1	Available								

= Available/Mission Capable  
 = Available/Partially Mission Capable

= Assigned/Deployed  
 = Out-of-Service

# RRCC / Regional Watch Center Status



Region	RRCC	Regional Watch Center
I	Not Activated	Maynard MOC (24/7)
II	Not Activated	24/7
III	Not Activated	24/7
IV	Not Activated	24/7
V	Not Activated	24/7
VI	Not Activated	Denton MOC (24/7)
VII	Not Activated	24/7
VIII	Not Activated	Denver MOC (24/7)
IX	Not Activated	24/7
X	Not Activated	Bothell MOC (24/7)

 = Not Mission Capable

 = Available/Partially Mission Capable

 = Available/Mission Capable

# National Team Status



Team/Status	Current Location	Remarks
National Watch Center	Washington, DC	Watch/Steady State
NRCC	Washington, DC	Not Activated
HLT	Miami, FL	Activated
DEST	Washington, DC	Not Activated
Mission Capable	Partially Mission Capable	Not Mission Capable



# FEMA

**FEMA's mission is to support our citizens and first responders to ensure that as a nation we work together to build, sustain, and improve our capability to prepare for, protect against, respond to, recover from, and mitigate all hazards.**